

For advice and sales call:

0800 288 423

Get Current

MARCH 2017

Featured:

- NEW Sentech Micro Alarms exclusive to CSL are the perfect choice for the home
- Partex helping make a difference in New Zealand
- Introducing LED sports lighting solutions that outshine the others.
- NEW Fluke TiX580 Infrared Cameras with Fluke Connect™
- Congratulations to the Master Electricians Apprentice of the year
- CSL sales team expands

The Weidmüller U-Remote along with ProECO power supplies and TRS relays installed at the EastPack processing facility ▶

Scott Bestic ▶



Weidmüller U-Remote helps deliver Kiwifruit success

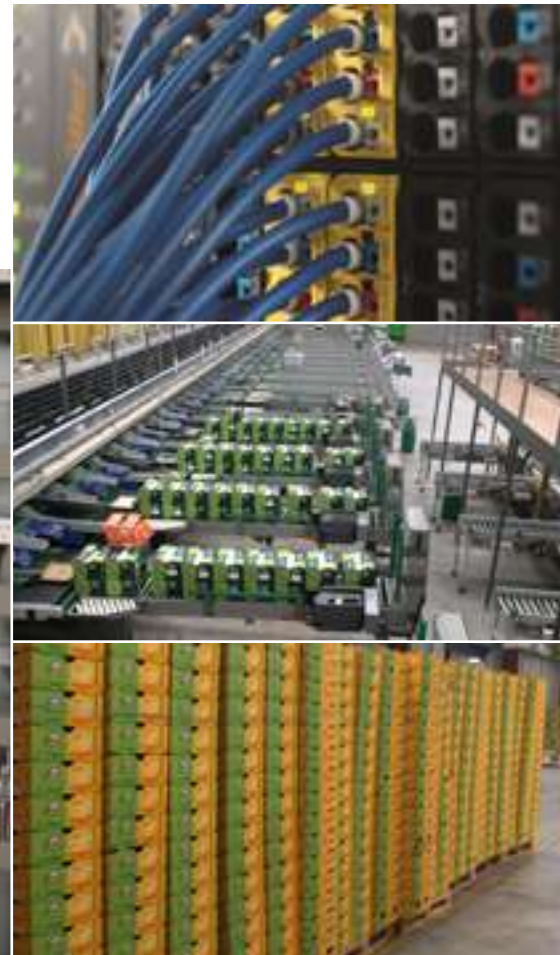
Kiwifruit productivity is now at an all-time high and they need to be able to deliver better accuracy with faster sorting and grading facilities.

With the resurgence in the Kiwifruit industry in the Bay of Plenty, processing and packaging lines have come under increased pressure. Processing companies needed to be able to deliver better accuracy with faster sorting and grading facilities. After the disappointment of previous year's, productivity is now at an all-time high and the pressure is on to process the new varieties. Local Te Puke electrical automation company Conway and Carpenter are at the forefront of this industry and have just completed an upgrade at the EastPack site.

Conway and Carpenter's Automation Engineer Jonathon Parton was looking for a flexible, cost effective remote I/O system to link onto his already

established Unitronics platform. After some in-house evaluation and testing the Weidmüller U-Remote system was chosen and installed. Jonathon liked the compatibility of the Weidmüller platform with Unitronics devices. The flexibility and range of the I/O was also a deciding factor. This all resulted in a cost effective upgrade of the plant, engineered and installed by the Conway and Carpenters team.

Weidmüller U-Remote. ▼





New Sentech Micro Alarms exclusive to CSL are the perfect choice for the home

Sentech Micro Smoke Alarms and Micro Heat alarms are discreetly sized, superbly designed and aesthetically pleasing to complement any home - and both come with a 10 year battery.



The Micro SMOKE Alarms are suitable for living rooms, dining rooms, hallways and bedrooms. This is because these rooms often contain large pieces of furniture which, while burning, will create more smouldering smoke than intense flame and heat.



Sentech Micro Smoke Alarms are New Zealand building code compliant (Meets EN14604:2005).

The Micro HEAT Alarm does not activate to smoke presence or changes in the air, the alarm is triggered when a dramatic increase in the temperature of the room is sensed. It is recommended that heat alarms are installed in kitchens, laundries, garages and workshops - areas where flame and heat, rather than smoke, are more likely to be present.



Sentech Micro Heat Alarms are Certified to EN60065:2014.

Features include:

- 10 Year Battery
- Both Adhesive & Screw Fixings
- 5 Year Warranty
- Quick easy installation
- Low Battery Silence
- Unique Test/Hush Button
- 85dB@3m Alarm
- End of Life Warning

To find out more about Sentech Smoke and Heat Alarms go to: www.sentech.co.nz

Partex helping make a difference in New Zealand

Partex and the Loof Foundation helping some Kiwi good Samaritans to feed the homeless...

Sophie Loof is co-owner of Partex Marking Systems and chairman of the Loof Foundation, a non-profit charitable organisation set up by Sophie and her family.

Sophie travelled to New Zealand from Sweden in February to meet with CSL, who have enjoyed a partnership with Partex for close to 20 years.

Whilst here, Sophie wanted to make a contribution to a local community project through the Loof Foundation which she heads.



Pictured below are Sophie (right) and volunteer Nina Wichman. Nina works with a small team of women at Helping Hands in Devonport who cook and provide meals and provisions to around 140 homeless people every week in the city.

The Loof Foundation contributed food and other necessities to assist with this great work. ♥





Introducing LED sports lighting solutions that outshine the others.



Sports lighting upgrades with Ephesus LED luminaires may be achieved without having to install additional fittings or towers



CSL is proud to introduce Ephesus, Americas leading brand in LED lighting for stadiums and other high-lumen outdoor and industrial applications. Ephesus Lighting was acquired by Eaton group and is sold under its Crouse-Hinds banner.

The LED engineering break through created at Ephesus, has revolutionized sports and industrial lighting. The ultra-high-performance LED technology and patented lens design produce more and better quality light (virtual daylight) than all other LED and conventional alternatives. What's more, an Ephesus LED system costs less to install, run and maintain than other lights on the market.

Ephesus ultra-high-performance LED lighting is shining brightly in more than 300 top-flight sports and industrial facilities throughout North America.

Look out for the Ephesus Lighting feature in the March issue of Electrolink magazine.

For more information on the Ephesus range visit the website at ephesus.com or contact Kerry Schreiber on 027 245 1011



520mm

Sports stadiums and fields of any size can now be fully and efficiently lit with Ephesus Stadium Pro LED luminaires.



CROUSE-HINDS
SERIES



NEW Fluke TiX580 Infrared Camera with Fluke Connect™

Bring your best to work. With up to 640x480 resolution, a large 5.7 inch touchscreen and a 240° rotating lens, the answer is right before your eyes, even when your target isn't.

Why work with anything less?

- Get stunning 640 x 480 image quality and surprising affordability in the TiX580
- Premium in-field viewing experience with the 5.7 inch responsive LCD touchscreen – 150% more viewing area²
- Easily navigate over, under and around objects with the 240° rotating lens and see the image before you capture it.
- The ergonomic design and neck strap make long inspection days a lot easier.
- Enhanced image quality and temperature measurement accuracy – turn your 640 x 480 images into 1280 x 960 and your 320 x 240 images into 640 x 480 images, that's 4x's the resolution and pixels with SuperResolution
- Get an in-focus image with the touch of a button. LaserSharp® Auto Focus, exclusive to Fluke, uses a built-in laser distance meter that calculates and displays the distance to your designated target¹ with pinpoint accuracy²
- These cameras are not only Fluke Connect® compatible but also include the new, powerful and easy-to-use Fluke Connect SmartView® desktop software to optimise and analyse infrared images, and generate quick, customisable reports.



¹ Up to 30 metres

² Compared to a standard 3.5 inch screen

Congratulations to Logan Sanders - Winner of the Master Electricians 2016 Apprentice of the Year



Logan Sanders, hosted by Dalton Electrical was the Master Electricians Challenge, Industrial Apprentice of the Year 2016.

To congratulate him on his win Phil Elliott presented Logan with a Fluke Connect Wireless General Maintenance kit. A helpful tool when he heads to the World Skills competition to represent New Zealand.

CSL sales team expands

CSL is very pleased to introduce three new members of the team.



▲ Luisa Coyle and Mark Leach both recently joined the South island team as Sales Representatives.

Bevan McGibbon was appointed as National Sales Manager in December 2016. ▶

