

For advice and
sales call:

0800 288 423

Get Current

JULY 2017

Featured:

- CSL Celebrates with Auckland on the opening of the Waterview Tunnel.
- Kiwi's at Hannover Messe 2017.
- Premium LED Industrial Lighting from Eaton Crouse-Hinds... IHB series LED Industrial high bays.
- CSL now distributing Honda Generators to the Electrical Industry.
- Fluke Process Tools up to 40% OFF in price.
- MilkSure at Fieldays 2017.
- CSL Expands with new roles.

CSL Celebrates with Auckland on the opening of the Waterview Tunnel.

CSL is proud of its involvement in helping bring the new Waterview tunnel project to a conclusion.

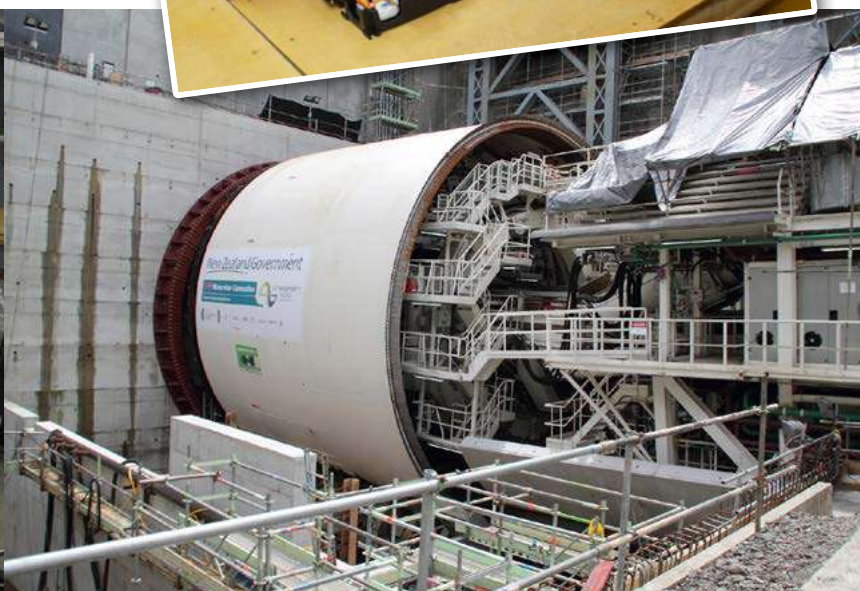
Working with the Well-Connected Alliance engineers, CSL's Solution's team successfully provided labelling, Identification and our unique range of IDC (insulation displacement connector) junction boxes for the CCTV, Comms and power systems.

The tunnel created a unique set of connectivity requirements that Weidmüller's FieldPower units were able to match perfectly, enabling fast and secure cable connections in the harsh and highly specified tunnel project. The IDC 'no-cable-cut' junction box technology provided the installation team with a fast and simple system to provide power to numerous CCTV and communication devices.

The FieldPower system has been adopted by

several innovative New Zealand companies with an installed base throughout New Zealand, Australia and North America particularly in the highly competitive parcel handling environment.

With strict critical path installation deadlines and being one of NZ's largest projects, CSL's team were up for the challenge with the Well-Connected Alliance and the Tunnel construction consortium. Well done to all involved and CSL is well poised to assist for NZ's infrastructure roll out.

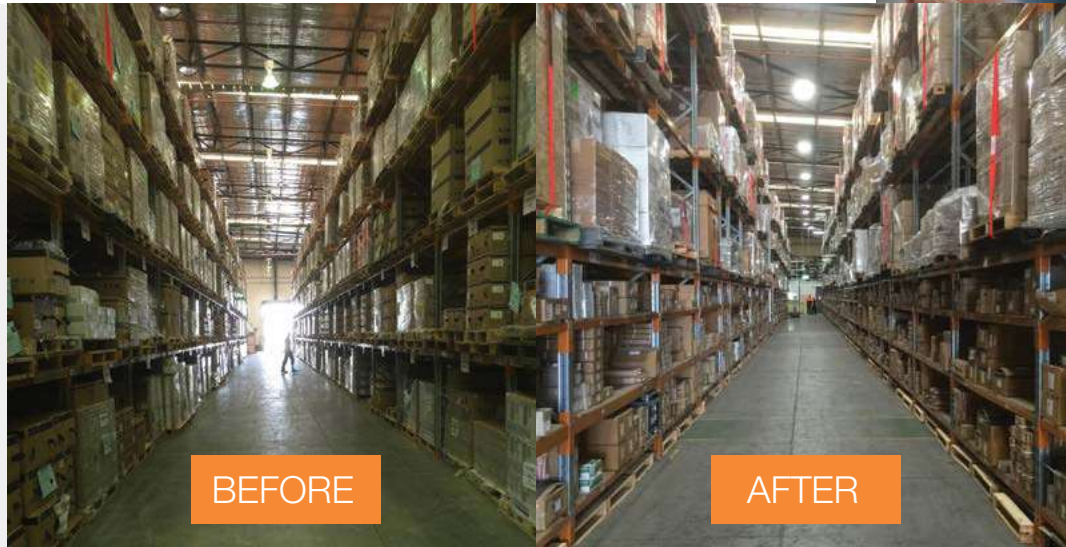




Kiwi's at Hannover Messe 2017

Three very lucky kiwi's were invited by Weidmüller to attend the annual Hannover industrial automation fair in Germany. Glyn Howell from Switchbuild Dunedin, Stefan Lipsey of Kiwi Controls Hamilton and Peter Gillespie from Cuthbert Stewart Ltd attended the Weidmüller sponsored event.

The trip included a visit to the Weidmüller factory in Detmold to see first-hand the production facilities and testing laboratories. The size of the fair and the number of people attending was truly amazing Peter commented, let alone the level of engineering and scale of the stands. Truly a must visit if you ever get an opportunity and the trains are always on time for an easy commute.



Premium LED Industrial Lighting from Eaton Crouse-Hinds... IHB series LED Industrial high bays.

Offering the industry's broadest range of LED luminaires for industrial lighting as well as specialist luminaires engineered for damp, harsh or hazardous environments, Crouse-Hinds luminaires can cut your energy costs by up to two thirds and virtually eliminate maintenance and manpower costs for the 60,000 hour rated life of the fittings.

Upgrading any industrial environment with the IHB series of LED high bays is easy with five base models offering replacements for fluoro highbays (ranging from 4 to 10 lamp equivalents) or 250 to 1500 watt HID's.

With efficacies of 117 lm/W and outputs ranging from 16,900 to 67,600 lumens at 80 CRI, you can upgrade to a better performing lighting solution with a potential payback under two years.

You can also specify Eaton's Crouse-Hinds slim profile IHB high bays with complete confidence in locations requiring continuous and consistent light levels, frequent on/off switching and where re-lamping is difficult.

There are pendant, wire and chain mounting options available, along with open and enclosed dust covers, lens guards and an occupancy sensor and 0-10 V dimming option.

Tempered, clear glass lenses are

standard. Diffused glass and clear or diffused polycarbonate options are also provided.

Call CSL now to learn more about Eaton's Crouse-Hinds LED lighting range.

– Contact David Elgie,
DavidE@cuthbertstewart.co.nz



FEATURES

- Superior engineering
- Up to 117 lm/W
- 80 CRI
- Up to 67 % energy savings over HID
- 5 models replacing 250 W to 1,500 W HID
- 3 mounting options for easy installation
- 5-year fixture warranty





CSL now distributing Honda Generators to the Electrical Industry

CSL are proud to announce a partnership with Honda Power Equipment to distribute the exceptional Honda Generator range to the electrical wholesale industry.

Whether you need it for work, for play or emergencies, Honda has you covered with a Generator to suit your requirements.

Stock of both the open framed and inverter type are held in the North and South Island to provide prompt service to customers.

The Inverter series are perfect for domestic or leisure use and are the quietest and cleanest on the market. Honda Inverter Technology means stable, clean power in a smaller, lighter package. The most sensitive electronics can be operated without fear of interruption.

The open framed generators are designed for commercial use. They are rugged, durable and are suitable for use anywhere back-up or emergency power is needed.

Honda offers innovations and cutting edge technology no other manufacturer can match.

When it comes to noise and emissions, Honda Generators are the quietest and cleanest on the market. Make sure you have a Generator you can trust to do the job when you need it.



HONDA
POWER EQUIPMENT

Love my Honda



Fluke Process Tools up to 40% OFF in price.

FLUKE®

For a limited time the following group of Process Tools are on offer at greatly reduced prices:

- **FLUKE-753:**
DOCUMENTING PROCESS CALIBRATOR
- **FLUKE-771:**
MILLIAMP PROCESS CLAMP METER
- **FLUKE-754:**
DOCUMENTING PROCESS CALIBRATOR, w/ HART
- **FLUKE-772:**
MILLIAMP PROCESS CLAMP METER
- **FLUKE-754/750SW:**
FLUKE-754 DPC & 750SW DPCTACK2 BUNDLE PACKAGE
- **FLUKE-773:**
MILLIAMP PROCESS CLAMP METER

This promotion is available for a limited time only so get in quick to avoid disappointment



MilkSure at Fieldays 2017

It was CSL's first time as an exhibitor at the annual Fieldays at Mystery Creek, Hamilton.

MilkSure, CSL's new monitoring technology, attracted a lot of interest, due to the need for Dairy farmers to comply with the new MPI standards which come into force next year.

If you are looking for a cost effective way to monitor milk temperature and compliance to MPI standards please contact Peter Gillespie 027 230 7439 or visit www.milksure.co.nz



CSL Expands with new roles

CSL is very pleased to introduce three newly appointed team members:

◀ David Elgie
- LED Lighting Sales
Representative



▲ Sean Teo
- Product Manager

◀ Darren Imms
- Customer Experience Manager

Here's a reminder of our promise to you (and ourselves!):

- No freight charges. Orders delivered free into store
- No surcharge on urgent orders
- No minimum (or maximum) order value imposed
- No mucking around.