

for Zone 1/21, 2/22

COOPER Crouse-Hinds



Technical data

eLLS 08 ...	
Marking to 94/9/EC	D II 2 G Ex de IIC T4 D II 2 D Ex tD A21 IP66 T80 °C
EC-Type Examination Certificate	BVS 09 ATEX E 034
IECEX-Certificate of Conformity	IECEX BVS 09.0033
Marking to IECEx	Ex de mb IIC T4 Ex tD A21 IP66 T80 °C
Permissible ambient temperature	-25 °C to +55 °C (U _n ≥ 220 V) -25 °C to +50 °C (U _n < 220 V)
Rated voltage	110 - 254 V AC / 110 - 250 V DC
Rated Frequency	50 - 60 Hz
Power factor cos φ	≥ 0,95
Circuit	Electronic ballast
Connecting terminals	L1, L2, L3, L, N, PE; max 2 x 6 mm ² single-wire per terminal
Insulation class	I
Lamp cap	G 13 acc.to IEC 60061-1
Degree of protection accd. EN 60529	IP 66
Cable glands/gland plates/enclosure entry holes	Ex-e cable glands M 25 x 1,5 (plastic) for cables from Ø 8 - 17 mm (option M 20 x 1,5 metal thread)
Enclosure material	Stainless steel 316 Ti (1.4571) sea water resistant
Protective cover/protective bowl	Polycarbonate
eLLS 08018/18	
Rated current	0.18 A
Lamp/illuminant	2 x T26 / 18 W (T8) acc. to IEC 60081
Rated luminous flux ¹⁾	2700 lm
Light efficiency in operation	78 %
Dimensions (L x W x H)	760 x 188 x 142
Weight	6.2 kg
eLLS 08036/36	
Rated current	0.34 A
Lamp/illuminant	2 x T26 / 36W (T8) acc. to IEC 60081
Rated luminous flux ¹⁾	6700 lm
Light efficiency in operation	78 %
Dimensions (L x W x H)	1360 x 188 x 142
Weight	8.9 kg

¹⁾ depends on used lamps at +25 °C

Battery Technology for Zone 1/21, 2/22

COOPER Crouse-Hinds



Technical data

eLLS 08 ... NIB

Marking to 94/9/EC	D II 2 G Ex de mb ib IIC T4 D II 2 D Ex tD A21 IP66 T80 °C
EC-Type Examination Certificate	BVS 09 ATEX E 034
IECEX-Certificate of Conformity	IECEX BVS 09.0033
Marking to IECEx	Ex de mb [ib] IIC T4 Ex tD A21 IP66 T80 °C
Permissible ambient temperature	-25 °C to +50 °C (specified data: -5 °C to +35 °C)
Rated voltage	220 - 254 V AC
Rated voltage (option)	110 - 127 V AC
Rated Frequency	50 - 60 Hz
Power factor cos φ	≥ 0,95
Circuit	Electronic ballast with emergency lighting supply
Connecting terminals	L1, L2, L3, L, N, PE; max 2 x 6 mm ² single-wire per terminal
Insulation class	I
Lamp cap	G 13 acc. to IEC 60061-1
Battery	Battery set with 7 Ah-NC battery, with LED display and monitoring via microprocessor
Rated emergency lighting operation	can be set on site 1.5 or 3 hours (for 1 lamp)
Charging duration	> 14 h
Degree of protection accd. EN 60529	IP 66
Cable glands/gland plates/enclosure entry holes	Ex-e cable glands M 25 x 1,5 (plastic) for cables from Ø 8 - 17 mm (option M 20 x 1,5 metal thread)
Enclosure material	Stainless steel 316 Ti (1.4571) sea water resistant
Protective cover/protective bowl	Polycarbonate

eLLS 08018/18 NIB

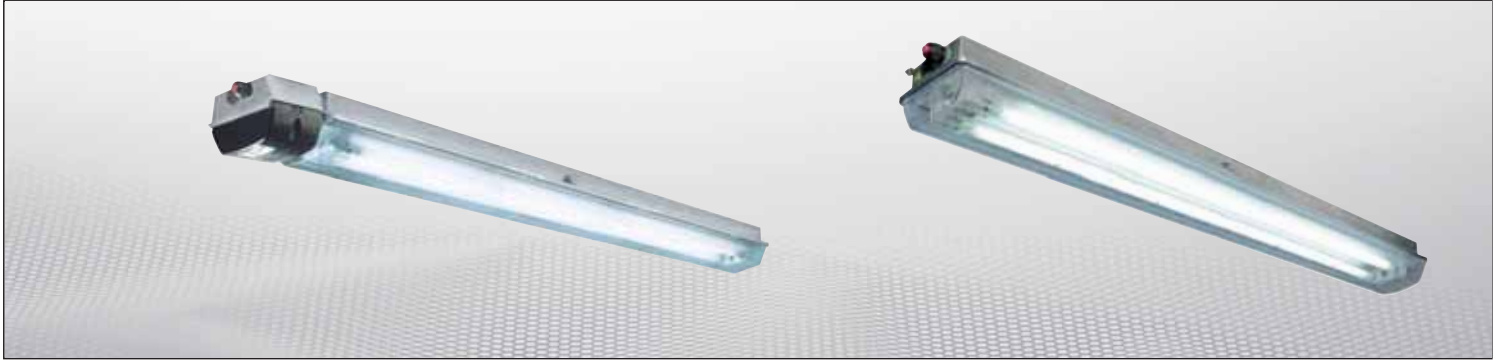
Rated current	0,23 A
Lamp/illuminant	2 x T26 / 18 W (T8) acc. to IEC 60081
Rated luminous flux ¹⁾	2700 lm
Luminous flux in emergency operation (1.5 h, one lamp) ¹⁾	1215 lm (90%)
Luminous flux in emergency operation (3 h, one lamp) ¹⁾	607 lm (45%)
Light efficiency in operation	78 %
Dimensions (L x W x H)	912 x 188 x 142
Weight	10,4 kg

eLLS 08036/36 NIB

Rated current	0,40 A
Lamp/illuminant	2 x T26 / 36W (T8)
Rated luminous flux ¹⁾	6700 lm
Luminous flux in emergency operation (1.5 h, one lamp) ¹⁾	1507 lm (45%)
Luminous flux in emergency operation (3 h, one lamp) ¹⁾	837 lm (25%)
Light efficiency in operation	78 %
Dimensions (L x W x H)	1512 x 188 x 142
Weight	14 kg

¹⁾ depends on used lamps at +25 °C

Robust lighting concepts



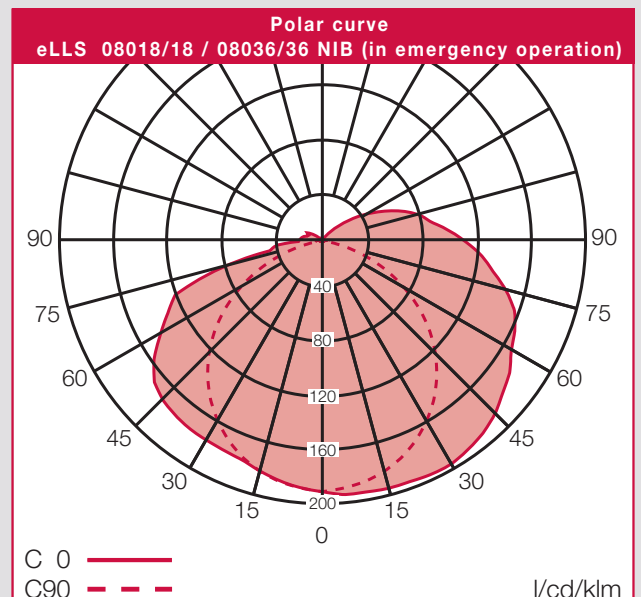
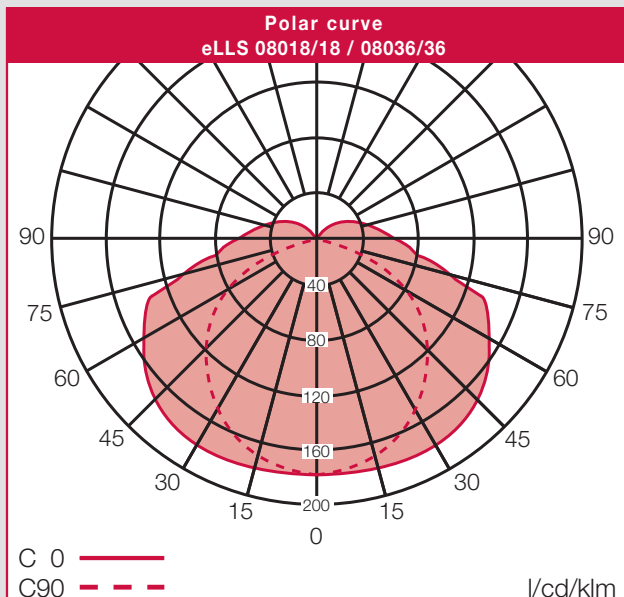
Ordering details

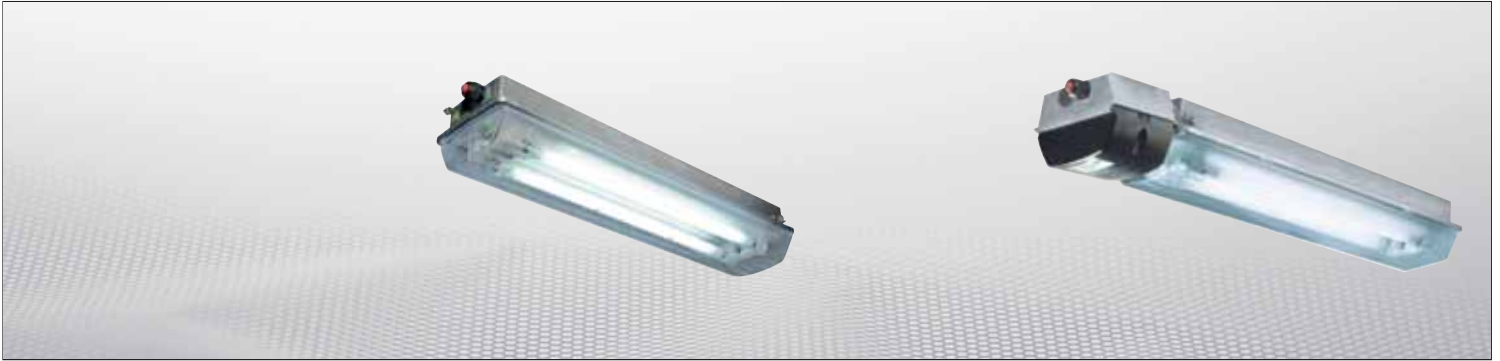
Type	Terminals	Through-wiring		Cable glands/ threads	Plugs	Order No.
		single-ended	double-ended			
eLLS 08018/18 (2 x 18 W)						
1/6-1K	1 x 6	x	-	1 x M25 x 1,5 (plastic)	1 x threaded	1 2225 218 002
1/6-1M ¹⁾	1 x 6	x	-	2 x M20 x 1,5 (metal)	1 x threaded	1 2225 218 012
2/6-2K	2 x 6	-	x	2 x M25 x 1,5 (plastic)	2 x threaded	1 2225 218 001
2/6-2M ¹⁾	2 x 6	-	x	4 x M20 x 1,5 (metal)	3 x threaded	1 2225 218 011
eLLS 08036/36 (2 x 36 W)						
1/6-1K	1 x 6	x	-	1 x M25 x 1,5 (plastic)	1 x threaded	1 2226 236 002
1/6-1M ¹⁾	1 x 6	x	-	2 x M20 x 1,5 (metal)	1 x threaded	1 2226 236 012
2/6-2K	2 x 6	-	x	2 x M25 x 1,5 (plastic)	2 x threaded	1 2226 236 001
2/6-2M ¹⁾	2 x 6	-	x	4 x M20 x 1,5 (metal)	3 x threaded	1 2226 236 011
eLLS 08018/18 NIB (2 x 18 W)						
1/6-1K	1 x 6	x	-	1 x M25 x 1,5 (plastic)	1 x threaded	1 2225 218 022
1/6-1M ¹⁾	1 x 6	x	-	2 x M20 x 1,5 (metal)	1 x threaded	1 2225 218 032
2/6-2K	2 x 6	-	x	2 x M25 x 1,5 (plastic)	2 x threaded	1 2225 218 021
2/6-2M ¹⁾	2 x 6	-	x	4 x M20 x 1,5 (metal)	3 x threaded	1 2225 218 031
eLLS 08036/36 NIB (2 x 36 W)						
1/6-1K	1 x 6	x	-	1 x M25 x 1,5 (plastic)	1 x threaded	1 2226 236 022
1/6-1M ¹⁾	1 x 6	x	-	2 x M20 x 1,5 (metal)	1 x threaded	1 2226 236 032
2/6-2K	2 x 6	-	x	2 x M25 x 1,5 (plastic)	2 x threaded	1 2226 236 021
2/6-2M ¹⁾	2 x 6	-	x	4 x M20 x 1,5 (metal)	3 x threaded	1 2226 236 031

¹⁾ with metal thread, without cable gland

NIB: 0 = 220 - 254 V / 4 = 110 V - 127 V

Polar curves | eLLS 08



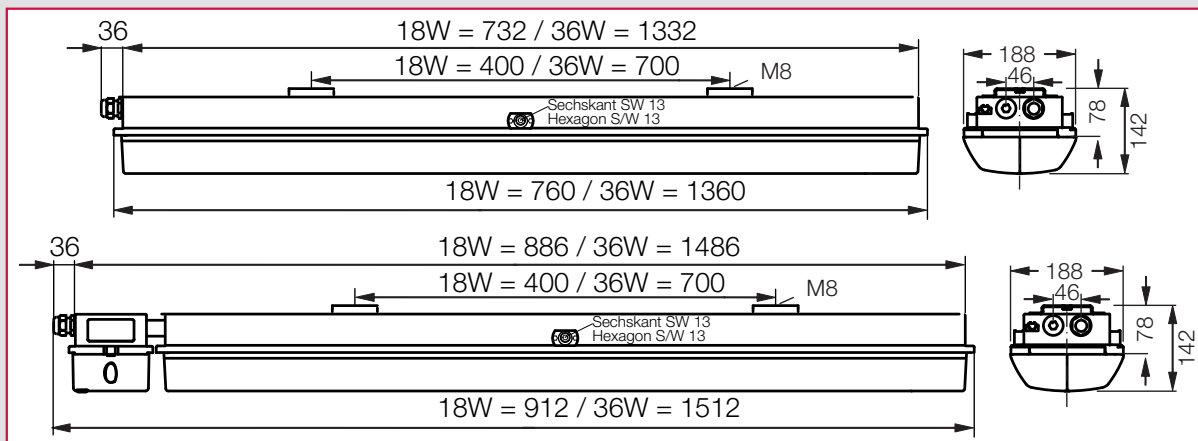


Accessories

Lamp for luminaire eLLS 08			
Type of lamp/socket/Diameter	Power	Luminous flux Light colour	Order No.
Bi-pin socket G13 T26/Ø 26 mm (T8) acc. IEC 60081	18 W	1350 lm white	3 2475 900 001
Bi-pin socket G13 T26/Ø 26 mm (T8) acc. IEC 60081	36 W	3350 lm white	3 2475 900 002

Fixing materials eLLS 08					
Type/code	Corrosion protection	for pipes DIN	Outer Ø D (mm)	Qty. per light fitting	Order No.
Hexagon screw S4	stainless steel			2	2 2480 054 000
Ceiling mounting bracket D92	stainless steel			2	2 2480 092 000
Pipe clamp R14	stainless steel	1 1/4"	38 - 42	2	2 2480 464 000
Pipe clamp R24	stainless steel	1 1/2"	47 - 51	2	2 2480 474 000
Pipe clamp R34	stainless steel	2"	56 - 60	2	2 2480 484 000
Eye bolt	stainless steel				2 2480 004 000
Hexagon key SW 13	galvanized			1	3 2485 000 005

Dimension drawings | eLLS 08036/36 / eLLS 08036/36 NIB



Dimension drawings | Fixing materials

