

# Accessories

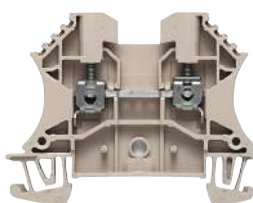
## Overview of Accessories

Like with other products from Weidmüller, choosing a Weidmüller accessory means you can obtain everything from one source.



### C.2 Power Supply

- Power supplies
- 24 & 48Vdc models
- Wide ranging inputs
- High efficiency



### C.3 Terminals

- Din rail terminals
- Fuse terminals
- Shield connections
- Din Rail



### C.4 Test Equipment

- RJ45 & USB cable testers
- Portable battery operated
- Cable or installation testing



### C.5 Tools

- Optical fibre termination
- Copper cabling termination
- Cutting and stripping
- Hydraulic Hole punch



### C.10 Cabtite cable entry glanding

- Split cable entry glands
- 5-9mm clamping range
- Re-usable



### C.11 Marking

- Terminal markers
- Group markers
- Wire markers
- Stainless steel markers
- Acrylic markers
- Custom printing

### PRO-M Power Supplies



PRO-M Advanced Switchmode Power Supplies

#### PRO-M Advanced Switchmode Power Supplies

The PRO-M range of switchmode power supplies have a space saving of up to 50% and no gap required between multiple units. PRO-M will squeeze into the tightest of switchboards or machines with overall efficiencies of up to 90%. Their extended operating temperature range of -25°C to +70°C increases the number application possibilities. Up to 5 modules can be connected without the need for external diode modules allowing for simple redundancy and increases in power output. A power boost up to 120% is provided for up to 2 minutes.

#### Ordering Data

Max. Output Power	Output Current	Output Voltage	Input Voltage	Dimensions LxWxH (mm)	Order No
<b>1-phase</b>					
70 W	3A	24 V (22.5 to 29.5 V)	85-264Vac / 80-370Vdc	125x33x130	8951330000
120 W	5 A	24 V (22.5 to 29.5 V)	85-264Vac / 80-370Vdc	125x40x130	8951340000
180 W	7.5 A	24 V (22.5 to 29.5 V)	85-264Vac / 80-370Vdc	125x50x130	8951350000
250 W	10 A	24 V (22.5 to 29.5 V)	85-264Vac / 80-370Vdc	150x60x130	8951360000
Diode Module	2 x 10 A	40 Vdc max	40 Vdc max / 10 A	110x55.5x125	8710620000

### PRO-H Power Supplies



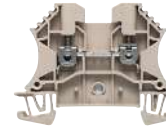
PRO-H Single-Phase Power Supplies

#### PRO-H Single-Phase Power Supplies

The PRO-H is a new generation of high performance DIN-rail mounted single-phase power supplies designed to work reliably even under the most demanding factory floor conditions. A high power reserve guarantees reliable start-up of loads with high inrush currents such as motor starting applications. Excellent electrical specifications and high immunity against fluctuations in input voltage makes these compact modules the best choice to power sensitive loads in industrial process control systems, machine tools or other demanding industrial applications.

#### Ordering Data

Max. Output Power	Output Current	Output Voltage	Input Voltage	Dimensions LxWxH (mm)	Order No
<b>1-phase</b>					
180 W	4 A	48 Vdc	85-132Vac / 187-264Vac	110x54x110	1105850000
360 W	7.5 A	48 Vdc	85-132Vac / 187-264Vac	125x80x125	1105860000
600 W	12.5 A	48 Vdc	85-132Vac / 187-264Vac	125x165x125	1105870000



## DIN Rail Terminals - Installation Accessories General

Accessories for Signal Installations are available from our Power and Data product ranges. General items that may be of use are shown below.

### Ordering Data

Type	Description	Order No.
<b>2.5mm DIN Rail mount Terminals (5.1mm wide)</b>		
WDU 2.5	Grey single deck terminal	1020000000
WDU 2.5BL	Blue single deck terminal	1020080000
WAP 2.5-10	Dark beige end plate	1050000000
WAP 2.5-10BL	Blue end plate	1050080000
WEW 35/2	End bracket	1061200000
WPE2.5	Earth terminal	1010000000
WDK 2.5	Dual deck terminal	1021500000
WDK 2.5V	Dual deck terminal all linked	1022300000
WAPD	Dual deck terminal end plate	1059100000
<b>Disconnect Terminals</b>		
WTR2.5	Single Deck disconnect terminal	1855610000
WTR2.5 STB2,3	Single Deck disconnect c/w test sockets	1855620000
WTR2.5/ZZ	Single Deck disconnect, dual connections	1039900000
WDTR2.5	Dual deck disconnect for each deck	9528070000
WDTR2.5/WE	1 input, 2 output each with disconnect, no end plate required	9528090000
<b>Fuse terminals for 5x20mm fuses (8mm wide)</b>		
WSI 6	Single deck fuse terminal	1011000000
WSI 6LD	Single deck fuse terminal 10-36Vac/dc with LED	1011300000
WSI 6LD	110Vdc/250Vac with LED	1012400000
KDSK1/35 DB	Dual deck terminal, one deck fused	9532440000
G20/0.25A/F	5 x 20mm, 0.25A fast blow fuse to suit KDSK1/35 DB	0430500000
G20/0.50A/F	5 x 20mm, 0.50A fast blow fuse to suit KDSK1/35 DB	0430600000
G20/1.00A/F	5 x 20mm, 1.00A fast blow fuse to suit KDSK1/35 DB	0430700000
G20/2.00A/F	5 x 20mm, 2.00A fast blow fuse to suit KDSK1/35 DB	0430900000
<b>Screwdriver to suit above terminals</b>		
SDI 0.6 x 3.5 x 100	Screwdriver	9008390000
<b>Shield connection terminals</b>		
KLBU 3-8 SC	3-8mm cable diameter to suit FM4 foot	1692261001
KLBU 4-13.5 SC	4-13.5mm cable diameter to suit FM4 foot	1712311001
KLBU 10-20 SC	10-20mm cable diameter to suit FM4 foot	1712321001
FM4	Metal DIN rail feet with M4 thread	0687900000
SSCH 10X3X1000 CU/SN	Tin plated copper busbar (1m length)	0348900000
SH 1 TS 15 complete	Busbar Holding Clip	0299860000
ZB 4G GN/GE	Busbar Clamping Yoke Green/Yellow for Instrument Earth	0322160000
ZB4 Blank	Bare Busbar Clamping Yoke	0316500000
WSH1	DIN Rail Holder	1068700000
<b>DIN Rail</b>		
TS35/F6	T35/F6 Slotted 7.5mm x 2m /ST/ZN	0676200000
TS35 7.5mm	TS35 7.5 mm x 2m /ST/ZN (Unslotted)	0383400000
<b>Markers</b>		
DEK5/5 Multi	Card of 200 markers - special print to order	1609810000

\*Please note that there are many other terminal sizes and accessories available. Please ask your distributor for details.

Testing Equipment



LAN / USB TESTER



IE-CT

C

Cable tester

Technical Data

	LAN USB	IE-CT
Functionality	Device for testing	Device for testing
	Ethernet cables for:	Ethernet cables for:
	line interruption	interference voltage
	core interruption	line interruption
	short-circuits	core interruption
	examination of the twist	short-circuits
		short-circuits
		examination of the twist
Error display play	LED display	7-segment display
External voltage		80 V AC / DC
Testable cable length	max. 1000 m	max. 1000 m
Supply tery	9V battery (Art. Nr.: 9004810000)	9 V battery
Connection for core	RJ 45; USB TypA; USB TypB	RJ45
Weight basic device	174 g	185 g
Dimensions basic device	65 x 135 x 27 mm	70 x 140 x 36 mm
Remote box weight	30 g	
Remote box dimensions	65 x 28 x 27 mm	
Weight testbox		31 g
Dimensions testbox		30 x 68 x 23 mm

Ordering Data

Type	Order No.
LAN USB TESTER	9205400000
IE-CT	8808420000

**Crimping Tools**



**TOOL-SET-IE-POF**

**Tool-Set-IE-POF**

- Assortment kit PSC 80, shears for Aramid fibres, Kevlar scissors, multi-tool HTX-IE-POF, stripping tool multi-stripax® IE-POF

Type	Order No.
TOOL-SET-IE-POF	1208930000



**HTX-IE-POF**

**HTX-IE-POF**

- Only one tool needed for all SC-RJ plug processing steps
- For working with Duplex POF fibres
- For stripping Duplex POF fibres

Type	Order No.
HTX-IE-POF	1208870000

**Pressing Tools**



**Scissor Kevlar**

**Scissor Kevlar**

- Only for cutting Aramid fibres (for strain relief on fibre-optic cables)
- Cable shears are especially for Aramid fibres
- Special cutting shape

Type	Order No.
SCISSOR KEVLAR	1208910000



**Multi-Stripax® POF**

**Multi-stripax® POF**

- Specially shaped blades enable stripping for special types of insulation and conductor configurations
- Stripping results reproduced accurately time and time again

Type	Order No.
MULTI-STRIPAX® POF	1208880000

**Insertion Tool for Twisted-pair Cable**



Punch Down Tool PDT

**PDT**

- Mechanics made from metal components
- Adjustable pressing force for conductor sizes AWG 20 to AWG 28
- Different blades for connector blocks of type 110 from AT&T, type 66, type LSA Plus from Krone (Standard and scissors cutting function) as well as for telephone outlets 630A6
- Incision blades with 2 functions: incision or incision with cutting off of remaining conductor
- Storage compartment for one blade

Type	Description	Order No.
PUNCH DOWN TOOL (PDT)	Wiring tool for IE-CCM cable connection module	9013970000
ACCESSORY: PD BLADE	Spare cutter PD LSA	9014000000
ACCESSORY: PD BLADE	Spare cutter LSA Plus	9014050000

**Copper Cabling Tools**



SEE ESD 120

**Electronic ESD Diagonal-cutting Pliers with Pointed Head**

- Hard wire (spring wire or steel nails): 0.4 mm AWG 26
- Semi-hard wire (iron or nails): 1.0 mm/AWG 18
- Soft wire (copper or aluminium): 1.5 mm/AWG 15

Type	Order No.
SEE ESD 120	9205130000



SIZE ESD 130

**Electronic ESD Snipe-nosed Pliers**

Type	Order No.
SIZE ESD 130	9204770000



SVSE ESD 130

**Electronic ESD Angle-cutting Pliers**

- Hard wire (spring wire or steel nails): 0.6 mm/AWG 22
- Semi-hard wire (iron or nails): 1.0 mm/AWG 18
- Soft wire (copper or aluminium): 1.2 mm/AWG 15

Type	Order No.
SVSE ESD 130	9205140000

## Stripping Tools



IE-CST

**1 - and 2 - step stripping in one operation**

Stripping tool for round (shielded) data cables of 2.5...8 mm  $\varnothing$

- Specially designed for Ethernet cables
- Strips sheathing and cuts shield in one operation
- Blue blade cartridge included in delivery

Type	Order No.
IE-CST	9204350000



AM12

**AM12**

- Cutting of UTP and STP data cables and other flexible copper cables with a diameter of up to 4 mm<sup>2</sup> (~AWG11)
- Stripping of the outer insulations of UTP and STP data cables and other round cables with  $\varnothing$  0.5 ... 12.5 mm

- No damage to the shielding or conductor due to adjustable stripping blade
- Length gauge for repeated stripping lengths

Type	Order No.
AM 12	9030060000

## Pressing Tools



TT 8 RS MP 8

**For 8-pole Shielded RJ45 Plug**

- Press (punch-down) tool for Ethernet connectors
- Ratchet for precise crimping
- Release option in the event of incorrect operation

Type	Order No.
TT 8 RS MP 8	9202800000

**PWZ RJ45**

- Crimping tool for Ethernet connectors



PWZ RJ45

Type	Order No.
PWZ RJ45	1118040000

**Crimping Tools for Other Contacts**



IE-CT-LC-GOF

**Crimping Tools for IP67 Plugs**

- For fibre-optic 0.9 mm LC and IP67 connectors

Type	Description	Order No.
IE-CT-LC-GOF	For fibre-optic 0.9 mm LC and IP67 connectors	9205330000
IE-CT-SC-GOF	For fibre-optic 0.9 mm, PROFINET, Mobil cable SC/ST and IP67 connectors	9205320000

**Cutting Tools**



KT 8

**KT 8**

- Cutting formation for different cable sizes increases the quality of the cuts for smaller cross-sections
- Cutting without deformation of the conductor
- Not suitable for steel wires, steel-armoured cables, aluminium alloys and hard-drawn copper conductors!

Type	Order No.
KT 8	9002650000

**Special Stripping Tools**



LWL-STRIPAX

**LWL-stripax®**

- Automatic opening of the clamping jaws after stripping
- Stripping length adjustable via end stop

Type	Order No.
M-D-STRIPAX LWL	9003750000

**Crimping Tools for Other Contacts**



IE-FISP-V4

**Crimping Tools for Other Contacts**

- Fastening tool for the hexagon cap nut from STEADYTEC® V4 flange and FrontCom Micro

Type	Order No.
IE-FISP-V4	9204370000



**Crimping Tools for Other Contacts**



**IE-KO-HAT**

**IE-KO-HAT**

- Pressure-relief valve protects against overload
- Cylinder head angled 90°
- Angled head, 360° turnable
- Ergonomic handle springs back by itself
- Waste pieces no longer become jammed thanks to the three-way splitting
- Hydraulic punch made from high-strength aluminium (approx, 40% weight savings)

Type	Order No.
IE-KO-HAT	9204370000

**Colour-coded rings**



**Colour-Coded Rings**

**IE-CR**

- For variant 1, 4 and 14 plugs

Description	Type	Order No.
Blue	IE-CR-IP67-WS20-BU	1963020000
Orange	IE-CR-IP67-WS20-OG	1963010000
Green	IE-CR-IP67-WS20-GN	1963040000
Grey	IE-CR-IP67-WS20-GY	1963000000
White	IE-CR-IP67-WS20-WH	1962990000
Yellow	IE-CR-IP67-WS20-YE	1963030000

**Cabtite Cable Entry System**



**KVT 32**

**KVT 32 and locknut for D-Sub 9**

Type	Thread	Order No. White	Order No. Black
HDC KVT 32	M 32 x 1.5	1826670000	1828270000
<b>Locknut for D-Sub 9</b>			
KGM-SUB-D9	M 32 x 1.5	1828250000	1828300000



**HDC KT**

**Cable Grommets, Small**

Type	Clamping range (mm)	Order No. Grey	Order No. Black
HDC KT 5	5-6	1826480000	1827810000
HDC KT 6	6-7	1826490000	1827830000
HDC KT 7	7-8	1826500000	1827840000
HDC KT 8	8-9	1826510000	1827850000
<b>Blanking plugs, small</b>			
HDC BTK		1828170000	1828200000

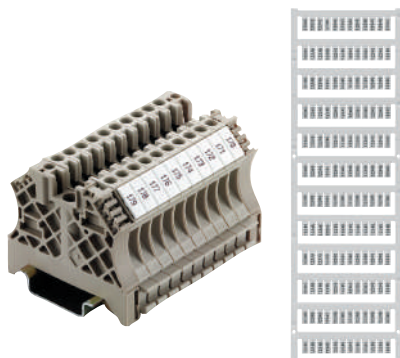


**HDC KEL 16**

**Cable Entry Strip**

Type	No. of grommet small	Order No. Black
HDC KEL 16/8	8	1825910000
HDC KEL 16/4	4	1825900000
<b>Blanking plugs, small</b>		
HDC KEL 16 SNAP		1827770000

**WS Markers**



**WS Markers - For W, Z, P & I Series**

Technical Data	
Material	Polyamide 66 Halogen Free
UL 94 Flammability Rating	V2
Temperature Rating	-40°C to 100°C
Printing	Black (Standard) Coloured Available

**Ordering Data**

Type	Colour	Order No.	Mat Quantity	Application
WS 8/5 MC	White	1640750000	144	5mm Pitch
WS 10/5 MC	White	1635010000	144	5mm Pitch
WS 10/6 MC	White	1818410000	120	6mm Pitch
WS 12/5 MC	White	1609870000	144	5mm Pitch
WS 12/6 MC	White	1609910000	120	6mm Pitch
WS 10/8 MC	White	1906030000	84	8mm Pitch
WS 10/12 MC	White	1906060000	60	12mm Pitch
WS 12/6,5 MC	White	1609930000	108	6,5mm Pitch
WS 12/8 MC	White	1906010000	84	8mm Pitch
WS 15/5 MC	White	1609890000	96	5mm Pitch
WS 10/15 MC	White	1854100000	48	15mm Pitch

Note: Colour options are available for some WS mats, please contact your Weidmüller Distributor

**Terminal Group Marking**



SCHT - 5S

SCHT - 5

**Group Marker SchT 5 or SchT 5S**

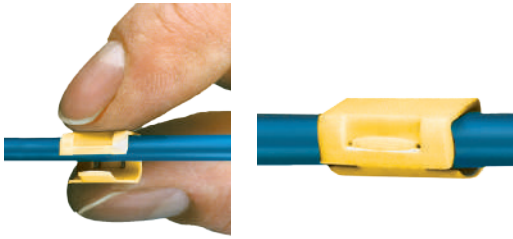
Technical Data	
Material	Polyamide 66 Halogen Free
UL 94 Flammability Rating	V2
Temperature Rating	-40°C to 100°C
Printing	Black (Standard) Coloured Available

Type	Description	Quantity	Order No.
<b>Label Covers</b>			
SCHT - 5 - S	9.5 mm width	Pack 20	1631930000
SCHT - 5	19.5 mm width	Pack 20	0292460000

**Ordering Data**

Type	Colour	Order No.	Mat/Sheet Quantity	Application
ELS 7/40 MC SDR	White	104570WEIS	8	SchT 5S Polyamide
ELS 16/40 MC SDR	White	104569WEIS	8	SchT 5 Polyamide
SCHT - 5 Clear Cover	White	0294000000	20	Suitable for card cover
SCHT - 5 - S Clear Cover	White	1631940000	20	Suitable for card cover

### SlimFix Flip Wire Markers



#### For Retrofitting Wire Markers

Technical Data	
Material	PVC
UL 94 Flammability Rating	V2
Temperature Rating	-40°C to 100°C
Printing	Black (Standard) Coloured Available

### Ordering Data

Type	Colour	Order No.	Mat Quantity	Application
SFC 2,5/12 WS NEW	White	1062040000	24	4,0-6,0 mm <sup>2</sup>
SFC 2,5/21 WS NEW	White	1062110000	24	4,0-6,0 mm <sup>2</sup>
SFC 3/12 WS	White	1025550000	16	4.0 - 10.0 mm <sup>2</sup>
SFC 3/21 WS	White	1025560000	16	4.0 - 10.0 mm <sup>2</sup>
SFC 3/30 WS	White	1025570000	12	4.0 - 10.0 mm <sup>2</sup>

Note: Colour options are available for some WS mats, please contact your Weidmüller Distributor

### Wire Markers Heat Shrink TwinMark Sleeves



#### Twin Mark Heat Shrink Sleeves

Technical Data	
Material	Polyolefin, halogen-free according to VDE 0472-815
Temperature Rating	-40°C to 105°C
Flammability	VDE 5510-2 drop-forming class ST2, EN 50343; Fed. STD-228, method 5221
Print Durability	MIL-M-81531, MIL-STD-202, method 215J If printed with Weidmüller THM-Plus or HSS 2001 printer and ribbon R 83/300

#### Ordering Data

Type	Wire Diameter	Order No.
<b>Selection Table HSS-HF</b>		
HSS-HF1/8" 1.8-2.8	1.8 - 2.8 mm	1961900000
HSS-HF3/16" 2.8-4.2	2.8 - 4.2 mm	1961910000
HSS-HF1/4" 4.2-5.8 4.	2 - 5.8 mm	1961920000
HSS-HF3/8" 5.8-8.0	5.8 - 8.0 mm	1961930000
HSS-HF1/2" 8.0-11.0	8.0 - 11.0 mm	1961940000
HSS-HF3/4" 11.0-17.0	11.0 - 17.0 mm	1961950000

PLEASE CONTACT WEIDMULLER FOR SPECIAL PRINT PRICING AND PART NUMBERS

**Stainless Steel Cable Markers**



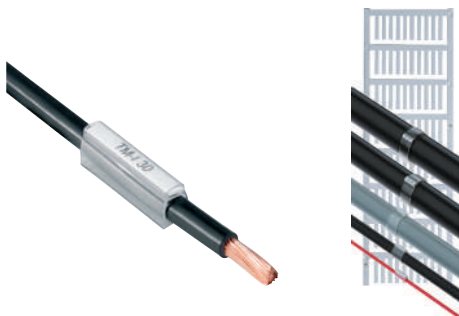
**Laser Engraved 316 Grade Stainless Steel Cable Markers**

- Material 316 Stainless Steel
- Printing Black

**Ordering Data**

Type	Grade	Order No.	Cable Marker Dimensions mm H x L x T
Stainless Steel - 2 Hole	316	7940013175	SS316TAG 10X89X0.4MM PRINT
Stainless Steel - 2 Hole	316	7940013176	SS316TAG 19X89X0.4MM PRINT

**TM-I Wire Markers**



**Inlay tags for transparent sleeves**

Technical Data	
Material	Polyamide 66 Halogen Free
UL 94 Flammability Rating	V2
Temperature Rating	-40°C to 100°C
Printing	Black (Standard) Coloured Available

**Ordering Data**

Type	Colour	Order No.	Mat Quantity	Application
TM-I 12 WS	White	1718420000	64	12mm Sleeves
TM-I 15 WS	White	1609990000	80	15mm Sleeves
TM-I 18 WS	White	1718440000	64	18mm Sleeves
TM-I 20 WS	White	1680420000	80	20mm Sleeves
TM-I 30 WS	White	1876320000	80	30mm Sleeves

**Engraved Legend Plates**

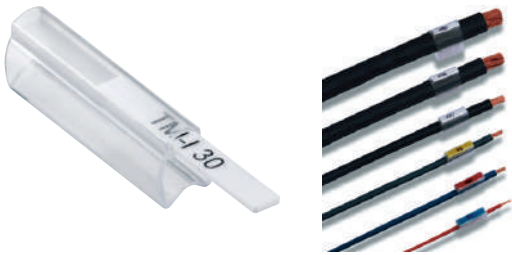


**Engraved Legend Plates 316 Stainless Steel**

**Ordering Data**

Type	Grade	Order No.	Application
SS316TAG 2B	316	7940038881	80 x 20 x 1.5 Print
SS316TAG 2B	316	7940038880	100 x 20 x 1.5 Print
SS316TAG 2B	316	7940038882	120 x 25 x 1.5 Print
SS316TAG 2B	316	7940038879	150 x 30 x 1.5 Print
SS316TAG 2B	316	7940038878	200 x 50 x 1.5 Print

Transparent PVC Sleeves



For TM-I Cable & Wire Markers

Technical Data	
Material	PVC
UL 94 Flammability Rating	V2
Temperature Rating min/max	-50°C continuous/80°C continuous
Material Colour	Transparent

Ordering Data

Type - TM 203 for Cables Cross Section 2.5-10mm <sup>2</sup>	Box Quantity	Cable O.D.	Order No.
TM 203/12	500	4 - 7 mm	1798510000
TM 203/15	500	4 - 7 mm	1798490000
TM 203/18	500	4 - 7 mm	1798480000
TM 203/20	500	4 - 7 mm	1798470000
TM 203/30	200	4 - 7 mm	1874770000
TM 204/12	200	6 - 10 mm	1806180000
TM 204/15	200	6 - 10 mm	1806240000
TM 204/18	200	6 - 10 mm	1806300000
TM 204/20	200	6 - 10 mm	1806360000
TM 204/30	200	6 - 10 mm	1874780000

Engraved Acrylic Labels



Alternate to Traffolyte

- Edge bevelling and standard mounting holes at no extra cost. Alternate colour combinations subject to availability.
- Available in shapes, cutouts, push-buttons and complex design
- Available with or without adhesive backing

Ordering Data

Technical Data	
Material	Laminated, UV Stable, Impact Acrylic
Thickness	2-ply 1.6mm (1/16")
Usage	Interior/Exterior Signage, Control Panels Legend Plates and Personal Identification
Features	Long-term durability, wear, impact and fade resistant

Area CM <sup>2</sup> (LxW)	White with Black Text	White with Red Text	Blue with White Text	Yellow with Black Text	Red with White Text
25	794009885	7940012996	794009998	7940012986	794009988
50	794009886	7940012998	794009999	7940012987	794009989
100	794009887	7940013000	7940010717	7940012988	794009990
150	794009888	7940013001	7940010718	7940012989	794009991
300	794009889	7940013002	7940010720	7940012990	794009992
600	794009890	7940013003	7940010723	7940012991	794009993
900	794009891	7940013004	7940012981	7940012992	794009994
1200	794009892	7940013005	7940012983	7940012993	794009995
1800	794009893	7940013006	7940012984	7940012994	794009996
2400	794009894	7940013007	7940012985	7940012995	794009997

ClipCard



An alternative to engraving. For use with CC holder or Self Adhesive option

Technical Data	
Material	Polyamide 66 Halogen Free
UL 94 Flammability Rating	V2
Temperature Rating	-40°C to 100°C
Printing	Black (Standard) Coloured Available

Ordering Data

Type	Colour	Order No.	Mat Quantity	Application
<b>CC Holder</b>				
CC 15/17 MC WS	White	187660000	16	"Used with CC Holder CC-H 15/17; Rail"
CC 15/27 MC WS	White	187675000	16	"Used with CC Holder CC-H 15/27; Rail"
CC 15/49 MC WS	White	187723000	8	Used with CC Holder CC-H 15/49
CC 15/60 MC WS	White	187732000	8	Used with CC Holder CC-H 15/60
CC 30/60 MC WS	White	193437000	6	Used with CC Holder CC-H 30/60
CC 85/54 MC WS	White	113846000	2	Used with CC Holder Logimark-H
CC RAIL 1000	White	179015000	1	1000 mm Black
CC RAIL 1000 TRANSPARENT	White	179016000	1	1000 mm Clear Cover
<b>Self Adhesive</b>				
CC 15/17 K MC WS	White	187662000	16	Self Adhesive
CC 15/27 K MC WS	White	187663000	16	Self Adhesive
CC 15/49 K MC WS	White	187720000	8	Self Adhesive
CC 15/60 K MC WS	White	187730000	8	Self Adhesive
CC 30/60 K MC WS	White	193441000	6	Self Adhesive
CC 85/54 K MC WS	White	113847000	2	Self Adhesive