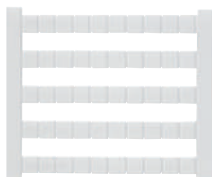


Marking and Identification Systems



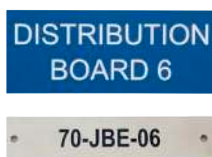
F.2 Dekafix Printed Terminal Markers

- F.2 Dekafix (DEK) Pre Printed Markers
- F.5 WAD Cover for W-Series



F.7 Blank and Custom Print Multicard Markers

- F.7 Dekafix Terminal Markers - DEK/WS
- F.7 Device Markers - ESG, Switch Mark
- F.8 Clip Card Device Markers
- F.9 Transparent Sleeves TM
- F.9 Cable Marker Holders
- F.10 Inlay Tags TM-I
- F.10 SlimFix Cable Markers
- F.11 SlimFix Clip
- F.12 Tags for Terminal Group Marking
- F.12 WAD Marker & Cover
- F.13 Transparent Sleeves
- F.13 Twin Mark Heat Shrink Sleeves



F.14 Custom Engraved Markers and Accessories

- F.14 Laser Engraved 316 Grade Stainless Steel Cable Markers
- F.14 316 Grade Stainless Steel Cable Ties
- F.15 Engraved Acrylic Labels
- F.15 Engraved Legend Plates 316 Stainless Steel



F.17 MetallCard

- F.17 MetallCard Individual Processing

*How to order Custom Print Markers see page F.21

Dekafix (DEK) Pre Printed Markers

Labels to characterise terminals, conductors and electronic products

- Material: Polyamide
- Flammability class acc. UL94: V2
- - 40°C ... +100°C
- Sold Per Card (Includes 50 Markers)

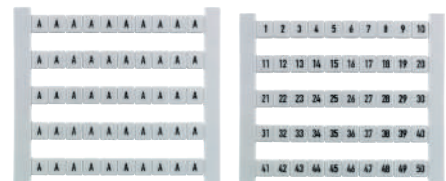
Key:

- GS = vertical
- FS = vertical
- GW = horizontal
- FW = horizontal

Type	Stamped	Order No
DEK 5 - HORIZONTAL		
DEK 5 Neutral	Blank	0473360000
DEK 5 GW A	A	0522761021
DEK 5 GW B	B	0522761022
DEK 5 GW C	C	0522761023
DEK 5 GW D	D	0522761024
DEK 5 GW E	E	0522761025
DEK 5 GW F	F	0522761026
DEK 5 GW G	G	0522761027
DEK 5 GW H	H	0522761028
DEK 5 GW I	I	0522761029
DEK 5 GW J	J	0522761030
DEK 5 GW K	K	0522761031
DEK 5 GW L	L	0522761032
DEK 5 GW M	M	0522761033
DEK 5 GW N	N	0522761034
DEK 5 GW O	O	0522761035
DEK 5 GW P	P	0522761036
DEK 5 GW Q	Q	0522761037
DEK 5 GW R	R	0522761038
DEK 5 GW S	S	0522761039
DEK 5 GW T	T	0522761040
DEK 5 GW U	U	0522761041
DEK 5 GW V	V	0522761042
DEK 5 GW W	W	0522761043
DEK 5 GW X	X	0522761044
DEK 5 GW Y	Y	0522761045
DEK 5 GW Z	Z	0522761046
DEK 5 FWZ 1-10	1-10	0523060001
DEK 5 FWZ 11-20	11-20	0523060011
DEK 5 FWZ 21-30	21-30	0523060021
DEK 5 FWZ 31-40	31-40	0523060031
DEK 5 FWZ 41-50	41-50	0523060041
DEK 5 FWZ 51-60	51-60	0523060051
DEK 5 FWZ 61-70	61-70	0523060061
DEK 5 FWZ 71-80	71-80	0523060071
DEK 5 FWZ 81-90	81-90	0523060081
DEK 5 FWZ 91-100	91-100	0523060091

Type	Stamped	Order No
DEK 5 GW +	+	0576261198
DEK 5 GW -	-	0576261199
DEK 5 GW ↓	↓	0576261202
DEK 5 GW ⊕	⊕	0576261203
DEK 5 GW L1	L1	0522361075
DEK 5 GW L2	L2	0522361076
DEK 5 GW L3	L3	0522361077
DEK 6 - HORIZONTAL		
DEK 6 Neutral	Blank	0468560000
DEK 6 FW 1-50	1-50	0468660001
DEK 6 FW 51-100	51-100	0468660051
DEK 6 FW 101-150	101-150	0468660101
DEK 6 FW 151-200	151-200	0468660151
DEK 6 FW 201-250	201-250	0468660201
DEK 6 FW 251-300	251-300	0468660251
DEK 6 FW 301-350	301-350	0468660301
DEK 6 FW 351-400	351-400	0468660351
DEK 6 FW 401-450	401-450	0468660401
DEK 6 FW 451-500	451-500	0468660451
DEK 6 FWZ 1-10	1-10	0518960001
DEK 6 FWZ 11-20	11-20	0518960011
DEK 6 FWZ 21-30	21-30	0518960021
DEK 6 FWZ 31-40	31-40	0518960031
DEK 6 FWZ 41-50	41-50	0518960041
DEK 6 FWZ 51-60	51-60	0518960051
DEK 6 FWZ 61-70	61-70	0518960061
DEK 6 FWZ 71-80	71-80	0518960071
DEK 6 FWZ 81-90	81-90	0518960081
DEK 6 FWZ 91-100	91-100	0518960091
DEK 6 FWZ L1	L1,L2, L3,N,E	0631961203
DEK 6 GW +	+	1318061198
DEK 6 GW -	-	1318061199
DEK 6 GW ↓	↓	1318061202
DEK 6 GW ⊕	⊕	1318061203

Type	Stamped	Order No
DEK 6.5 - HORIZONTAL		
DEK 6.5 FW 1-50	1-50	0468160001
DEK 6.5 FW 51-100	51-100	0468160051
DEK 6.5 FW 101-150	101-150	0468160101
DEK 6.5 FW 151-200	151-200	0468160151
DEK 6.5 FW 201-250	201-250	0468160201
DEK 6.5 FW 251-300	251-300	0468160251
DEK 6.5 FW 301-350	301-350	0468160301
DEK 6.5 FW 351-400	351-400	0468160351
DEK 6.5 FW 401-450	401-450	0468160401
DEK 6.5 FW 451-500	451-500	0468160451
DEK 6.5 FWZ 1-10	1-10	0519060001
DEK 6.5 FWZ 11-20	11-20	0519060011
DEK 6.5 FWZ 21-30	21-30	0519060021
DEK 6.5 FWZ 31-40	31-40	0519060031
DEK 6.5 FWZ 41-50	41-50	0519060041
DEK 6.5 FWZ 51-60	51-60	0519060051
DEK 6.5 FWZ 61-70	61-70	0519060061
DEK 6.5 FWZ 71-80	71-80	0519060071
DEK 6.5 FWZ 81-90	81-90	0519060081
DEK 6.5 FWZ 91-100	91-100	0519060091
Note Each pack size is 1 card (CRD) of 50 Markers		



GW (Alpha Characters)

FW (Numbers in Sequence)



FWZ
(Numbers in Sequence of 10)

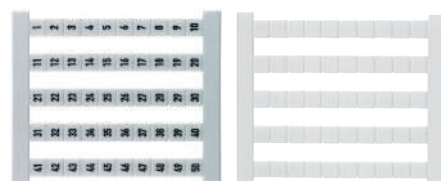
BLANK

Dekafix (DEK) Pre Printed Markers

Key:

- GS = vertical
- FS = vertical

Type / Print	Order No	Type / Print	Order No	Type	Stamped	Order No
DEK 5 - VERTICAL		DEK 5 FSZ 81-90	0460660081	DEK 6 FS 201-250		0468760201
DEK 5 GS A	0132961021	DEK 5 FSZ 91-100	0460660091	DEK 6 FS 251-300		0468760251
DEK 5 GS B	0132961022	DEK 5 Blank	0473360000	DEK 6 FS 301-350		0468760301
DEK 5 GS C	0132961023	DEK 5 FS 1-50	0473560001	DEK 6 FS 351-400		0468760351
DEK 5 GS D	0132961024	DEK 5 FS 51-100	0473560051	DEK 6 FS 401-450		0468760401
DEK 5 GS E	0132961025	DEK 5 FS 101-150	0473560101	DEK 6 FS 451-500		0468760451
DEK 5 GS F	0132961026	DEK 5 FS 151-200	0473560151	DEK 6 FS 501-550		0468760501
DEK 5 GS G	0132961027	DEK 5 FS 201-250	0473560201	DEK 6 FS 601-650		0468760551
DEK 5 GS H	0132961028	DEK 5 FS 251-300	0473560251	DEK 6 FS 651-700		0468760601
DEK 5 GS I	0132961029	DEK 5 FS 301-350	0473560301	DEK 6 FS 701-750		0468760651
DEK 5 GS J	0132961030	DEK 5 FS 351-400	0473560351	DEK 6 FS 751-800		0468760701
DEK 5 GS K	0132961031	DEK 5 FS 401-450	0473560401	DEK 6 FS 801-850		0468760751
DEK 5 GS L	0132961032	DEK 5 FS 451-500	0473560451	DEK 6 FS 851-900		0468760801
DEK 5 GS M	0132961033	DEK 5 FS 501-550	0473560501	DEK 6 FS 901-950		0468760901
DEK 5 GS N	0132961034	DEK 5 FS 551-600	0473560551	DEK 6 FS 951-999		0468760951
DEK 5 GS O	0132961035	DEK 5 FS 601-650	0473560601	DEK 6.5 - VERTICAL		
DEK 5 GS P	0132961036	DEK 5 FS 651-700	0473560651	DEK 6.5 FS 1-50		0468260001
DEK 5 GS Q	0132961037	DEK 5 FS 701-750	0473560701	DEK 6.5 FS 51-100		0468260051
DEK 5 GS R	0132961038	DEK 5 FS 751-800	0473560751	DEK 6.5 FS 101-150		0468260101
DEK 5 GS S	0132961039	DEK 5 FS 801-850	0473560801	DEK 6.5 FSZ 1-10		0407360001
DEK 5 GS T	0132961040	DEK 5 FS 851-900	0473560851	DEK 6.5 FSZ 11-20		0407360011
DEK 5 GS U	0132961041	DEK 5 FS 901-950	0473560901	DEK 6.5 FSZ 21-30		0407360021
DEK 5 GS V	0132961042	DEK 5 FS 951-999	0473560951	DEK 6.5 FSZ 31-40		0407360031
DEK 5 GS W	0132961043	DEK 6 - VERTICAL		DEK 6.5 FSZ 41-50		0407360041
DEK 5 GS X	0132961044	DEK 6 FSZ 1-10	0133360001	DEK 6.5 FSZ 51-60		0407360051
DEK 5 GS Y	0132961045	DEK 6 FSZ 11-20	0133360011	DEK 6.5 FSZ 61-70		0407360061
DEK 5 GS Z	0132961046	DEK 6 FSZ 21-30	0133360021	DEK 6.5 FSZ 71-80		0407360071
DEK 5 GS PE	0157261187	DEK 6 FSZ 31-40	0133360031	DEK 6.5 FSZ 81-90		0407360081
DEK 5 GS ↓	0157261202	DEK 6 FSZ 41-50	0133360041	DEK 6.5 FSZ 91-100		0407360091
DEK 5 GS ⊕	0157261203	DEK 6 FSZ 51-60	0133360051			
DEK 5 FSZ 1-10	0460660001	DEK 6 FSZ 61-70	0133360061			
DEK 5 FSZ 11-20	0460660011	DEK 6 FSZ 71-80	0133360071			
DEK 5 FSZ 21-30	0460660021	DEK 6 FSZ 81-90	0133360081			
DEK 5 FSZ 31-40	0460660031	DEK 6 FSZ 91-100	0133360091			
DEK 5 FSZ 41-50	0460660041	DEK 6 FS 1-50	0468760001			
DEK 5 FSZ 51-60	0460660051	DEK 6 FS 51-100	0468760051			
DEK 5 FSZ 61-70	0460660061	DEK 6 FS 101-150	0468760101			
DEK 5 FSZ 71-80	0460660071	DEK 6 FS 151-200	0468760151			



FS

BLANK

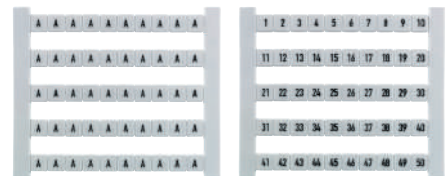
Dekafix (DEK) Pre Printed Markers

Key:

- GW = horizontal
- FW = horizontal

F

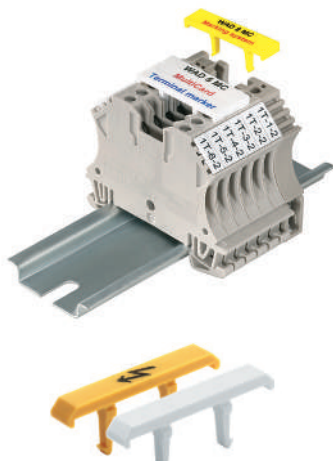
Type / Print	Order No	Type / Print	Order No	Type	Stamped	Order No
DEK 5 - HORIZONTAL		DEK 5 GW 38	0522660038	DEK 5 FW 951-999		0473460951
DEK 5 GW 1	0522660001	DEK 5 GW 39	0522660039	DEK 6 - HORIZONTAL		
DEK 5 GW 2	0522660002	DEK 5 GW 40	0522660040	DEK 6 GW 1		0522660001
DEK 5 GW 3	0522660003	DEK 5 GW 41	0522660041	DEK 6 GW 2		0522660002
DEK 5 GW 4	0522660004	DEK 5 GW 42	0522660042	DEK 6 GW 3		0522660003
DEK 5 GW 5	0522660005	DEK 5 GW 43	0522660043	DEK 6 GW 4		0522660004
DEK 5 GW 6	0522660006	DEK 5 GW 44	0522660044	DEK 6 GW 5		0522660005
DEK 5 GW 7	0522660007	DEK 5 GW 45	0522660045	DEK 6 GW 6		0522660006
DEK 5 GW 8	0522660008	DEK 5 GW 46	0522660046	DEK 6 GW 7		0522660007
DEK 5 GW 9	0522660009	DEK 5 GW 47	0522660047	DEK 6 GW 8		0522660008
DEK 5 GW 10	0522660010	DEK 5 GW 48	0522660048	DEK 6 GW 9		0522660009
DEK 5 GW 11	0522660011	DEK 5 GW 49	0522660049	DEK 6 GW 10		0522660010
DEK 5 GW 12	0522660012	DEK 5 GW 50	0522660050	DEK 6 FWZ 1-10		0518960001
DEK 5 GW 13	0522660013	DEK 5 FWZ 1-19	0235860000	DEK 6 FWZ 11-20		0518960011
DEK 5 GW 14	0522660014	DEK 5 FWZ 21-39	0235960000	DEK 6 FWZ 21-30		0518960021
DEK 5 GW 15	0522660015	DEK 5 FWZ 41-59	0236060000	DEK 6 FWZ 31-40		0518960031
DEK 5 GW 16	0522660016	DEK 5 FWZ 2-20	0236160000	DEK 6 FWZ 41-50		0518960041
DEK 5 GW 17	0522660017	DEK 5 FWZ 22-40	0236260000	DEK 6 FWZ 51-60		0518960051
DEK 5 GW 18	0522660018	DEK 5 FWZ 42-60	0236360000	DEK 6 FWZ 61-70		0518960061
DEK 5 GW 19	0522660019	DEK 5 FW 1-50	0473460001	DEK 6 FWZ 71-80		0518960071
DEK 5 GW 20	0522660020	DEK 5 FW 51-100	0473460051	DEK 6 FWZ 81-90		0518960081
DEK 5 GW 21	0522660021	DEK 5 FW 101-150	0473460101	DEK 6 FWZ 91-100		0518960091
DEK 5 GW 22	0522660022	DEK 5 FW 151-200	0473460151	DEK 6 FWZ 101-110		0518960101
DEK 5 GW 23	0522660023	DEK 5 FW 201-250	0473460201	DEK 6 FWZ 111-120		0518960111
DEK 5 GW 24	0522660024	DEK 5 FW 251-300	0473460251	DEK 6 FWZ 121-130		0518960121
DEK 5 GW 25	0522660025	DEK 5 FW 301-350	0473460301	DEK 6 FWZ 131-140		0518960131
DEK 5 GW 26	0522660026	DEK 5 FW 351-400	0473460351	DEK 6 FWZ 141-150		0518960141
DEK 5 GW 27	0522660027	DEK 5 FW 401-451	0473460401	DEK 6 FWZ 151-160		0518960151
DEK 5 GW 28	0522660028	DEK 5 FW 451-500	0473460451	DEK 6 FWZ 161-170		0518960161
DEK 5 GW 29	0522660029	DEK 5 FW 501-550	0473460501	DEK 6 FWZ 171-180		0518960171
DEK 5 GW 30	0522660030	DEK 5 FW 551-600	0473460551	DEK 6 FWZ 181-190		0518960181
DEK 5 GW 31	0522660031	DEK 5 FW 601-650	0473460601			
DEK 5 GW 32	0522660032	DEK 5 FW 651-700	0473460651			
DEK 5 GW 33	0522660033	DEK 5 FW 701-750	0473460701			
DEK 5 GW 34	0522660034	DEK 5 FW 751-800	0473460751			
DEK 5 GW 35	0522660035	DEK 5 FW 801-850	0473460801			
DEK 5 GW 36	0522660036	DEK 5 FW 851-900	0473460851			
DEK 5 GW 37	0522660037	DEK 5 FW 901-950	0473460901			



GW
(Alpha Characters)

FW
(Numbers in Sequence)

WAD Cover for W-Series



Type	Qty*	For Standard Terminals	For Compact Terminals	Order No
WAD 4				
Yellow with warning flash	50	WDU 1.5/ ZZ	WDU 2.5 N	1072000000
White	50	WDU 2.5 / 1.5 / ZR	WDU 4 N WDK 2.5	1072100000
WAD 12				
Yellow with warning flash	50	WDU 16		1055960000
White	50	WDU 35		1056260000

Note * Qty. above is recommended pack sizes

Technical Data	
Material	Polyamide PA 66
Temperature Range	-40°C ... +100°C
Flammability	V2 nach UL 94
Substances	Free of halogen, cadmium or silicon
Printable Area	WAD 5: 32 x 4,5 mm WAD 8: 32 x 7,2 mm

Type	Colour	Qty	Order No
Neutral			
WAD 5 MC NE WS	White	(Box of 48)	1112910000
WAD 5 MC NE GE	Yellow	(Box of 48)	1112920000
WAD 8 MC NE WS	White	(Box of 48)	1112940000
WAD 8 MC NE GE	Yellow	(Box of 48)	1112950000
With Flash			
WAD 5 MC B GE/WS	Yellow/black printed	(Box of 48)	1120450000
WAD 8 MC B GE/WS	Yellow/black printed	(Box of 48)	1120470000
Special Print			
WAD 5 MC SDR		12	1112930000
WAD 8 MC SDR		12	1112970000



The MultiCard Concept

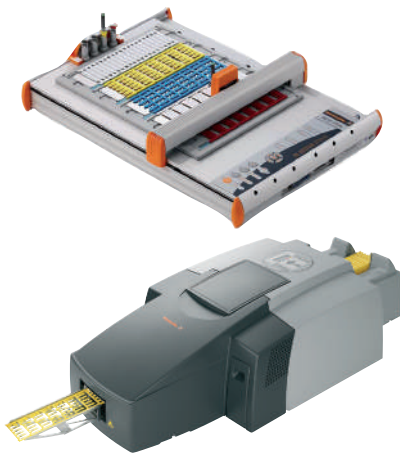
A Printing System for Terminals, Wires and Devices

Versatile and rapid creation of individual markers with the MultiCard system enables you to save time and costs when marking your electrical installation.

The MultiCard marking system consists of a coordinated combination of:

MultiCard Printers

Weidmüller developed the **MCP Plus Plotter** and **NEW PrintJet PRO** printers specially for the MultiCard concept. No compromises were made with regard to printing quality, printing speed or operating convenience. All of the advantages of modern-day printing technology have been optimised to suit the MultiCard system. Weidmüller's



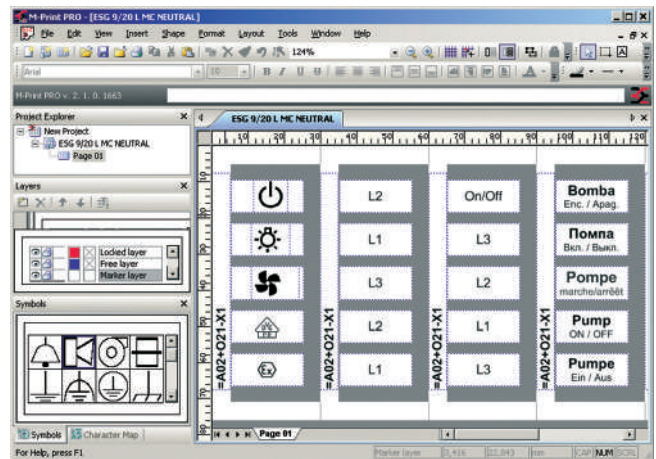
The benefits to you:

- Excellent printing quality.
- Fast printing
- Wipe-proof, scratch-resistant markers

MultiCard concept is a standardised, innovative printing system with more than 100 marker variations for terminal connectors, wires and cables as well as devices and installations from a wide range of manufacturers.

MultiCard Software

Using the software M-Print® PRO, you can plan individual printing of single MultiCard strips. Irrespective of the sequence of the characters, it is possible to prepare markings for whole blocks of terminals in advance. You only need to create the markers you currently need – and in the order the assembly dictates. This then prevents delays and confusion during installation procedures.

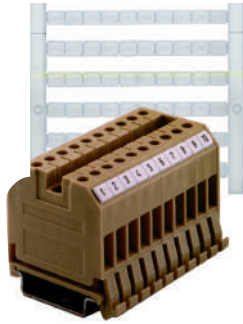


The benefits to you:

- Individual planning of labelling
- No need for stocks of preprinted labels
- Easy integration of graphics
- Data transfer from CAE systems
- Ideal for creating, printing and ordering markers & labels

Dekafix Terminal Markers - DEK/WS

- Material: Polyamide 66
- Flammability class acc. UL94: V2
- Temperature range: - 40°C ... +100°C


DEKAFIX For Weidmüller Terminals: SAK, W, Z and P Series

Type	Order No. (Blank)	Qty / Pack	Order No. (Custom Printed)	Mat Quantity
DEK 5/5	1609801044	1000	1609810000	200
DEK 5/6	1609820000	1000	1609830000	200
DEK 5/6.5	1609840000	900	1609850000	180
DEK 5/3.5	1755270000	500	1767730000	100
DEK 5/5 PLUS MC	1854490000	1000	1854500000	200
DEK 5/6 MC SDR PLUS	1011320000	1000	1038650000	200
DEK 5/6,5 PLUS MC	1046340000	900	1046360000	180
DEK 5/7,5 MC	1720620000	320	1770490000	64
DEK 5/8 MC	1856740000	800	1856750000	160
DEK 5/8 PLUS MC	1046350000	800	1046370000	160


WS/ZS For Weidmüller Terminals: SAK, W, Z and P Series

Type	Order No. (Blank)	Qty / Pack	Order No. (Custom Printed)	Mat Quantity
WS 8/5 MC	1640740000	720	1640750000	144
WS 10/5 MC	1635000000	720	1635010000	144
WS 12/5 MC	1609860000	720	1609870000	144
WS 15/5 MC	1609880000	480	1609890000	96
WS 12/6 MC	1609900000	600	1609910000	120
WS 12/6.5 MC	1609920000	540	1609930000	108
WS 10/6 MC	1828450000	600	1818410000	120
WS 10/8 MC	1905950000	420	1906030000	84
WS 10/12 MC	1905970000	300	1906060000	60
WS 12/8 MC	1906000000	480	1906010000	96
WS 10/15 MC	1854090000	240	1854100000	48

Device Markers - ESG, Switch Mark

- Material: Polyamide 66
- Flammability class acc. UL94: V2
- Temperature range: - 40°C ... +100°C


ESG

Type	Order No. (Blank)	Qty / Pack	Order No. (Custom Printed)	Markers Per Card
ESG 7/20 Sirius	1736181044	200	173618WEIS	40
ESG 8/17 MC Neutral	1674740000	200	1674750000	40
ESG 8/17 SCHS MC Neutral	1720610000	200	1766640000	40
ESG 8/17 SYS PRO M	1755340000	200	1755350000	40
ESG 8/19 MC Neutral	1652220000	200	1652230000	40
ESG 9/17 K Neutral WS	1674760000	200	1674770000	40
ESG 9/17 K Special	1686950000	200		
ESG MC Neutral 9/17	1724760000	200	1770480000	40
ESG 9/20 MC Neutral WS	1609940000	200	1609950000	40
SCHS 1 Black	1389000000	1		
SCHS 2 SK. F. ESG	1720600000	1		

Device Markers - ESG, Switch Mark

- Material: Polyamide 66
- Flammability class acc. UL94: V2
- Temperature range: - 40°C ... +100°C



SWITCH MARK

Type	Order No. (Blank)	Qty / Pack	Order No. (Custom Printed)	Markers Per Card
SM 27/12.5 K White (Adhesive)	1699880000	80	1699890000	16
SM 27/12.5 White	1699840000	80	1699850000	16
SM 27/18 K White (Adhesive)	1707270000	80	1707280000	16
SM 27/18 White	1699860000	80	1699870000	16
SM 27/8 White	1699820000	80	1699830000	16
SM 27/27 K White (Adhesive)	1773220000	60	1773240000	12
SM 27/27 White	1783000000	60	1783100000	12
SM-H 27/12.5 Holder	1766400000	25		
SM-H 27/18 Holder	1716630000	25		
SM-H 27/27 Holder	1782710000	10		

F

Clip Card Device Markers



CLIP CARD

Type	Order No. (Blank)	Qty / Pack	Order No. (Custom Printed)	Markers Per Card
Clip Card Device Marker				
CC 15/49 MC	1877260000	40	1877200000	8
CC 15/60 MC	1877350000	40	1877300000	8
CC 15/17 KMC (Self-Adhesive)	1876590000	80	1876600000	16
CC 15/27 KMC (Self-Adhesive)	1876640000	80	1876750000	16
CC 15/49 KMC (Self-Adhesive)	1877220000	40	1877230000	8
CC 15/60 KMC (Self-Adhesive)	1877310000	40	1877320000	8
Clip Card Holder				
CC-H 15/60 Holder	1878910000	25		
STR CC 15/17 Protective Sleeve	1888310000	80		
STR CC 15/27 Protective Sleeve	1888290000	80		
STR CC 15/49 Protective Sleeve	1888300000	40		
STR CC 15/60 Protective Sleeve	1888280000	40		
Clip Card Protective Foil				
ETO CC 15/17	1880850000	1 (228 Labels/Sheet)		
ETO CC 15/27	1880810000	1 (133 Labels/Sheet)		
ETO CC 15/49	1880830000	1 (76 Labels/Sheet)		
ETO CC 15/60	1880840000	1 (57 Labels/Sheet)		
Clip Card Tag Carrier				
CC Rail 1000	1790150000	1		
CC Rail 1000 Transparent	1790160000	1		

Transparent Sleeves TM

- Material: PVC
- Flammability class acc. to UL 94 V2
- - 50°C ... +80°C
- Use inlay tags TM-I next page



DEKAFIX For Weidmüller Terminals: SAK, W, Z and P Series		
Type	Insulation Outside	Cross. Section Ø Area (mm ²)
TM 201	1.5 ... 2.5	0.25 ... 1.5
TM 202	2.0 ... 4	0.5 ... 2.5
TM 203	4 ... 7	2.5 ... 10
Type	Qty	Order No.
TM 201 For Cables Cross Section 0.25-1.5mm²		
TM 201/12	1000	1798640000
TM 201/15	1000	1798620000
TM 201/18	1000	1798600000
TM 201/20	1000	1798580000
TM 201/30	500	1874850000
TM 202 For Cables Cross Section 0.5-2.5mm²		
TM 202/12	1000	1798560000
TM 202/15	1000	1798540000
TM 202/18	1000	1798530000
TM 202/20	1000	1798520000
TM 202/30	500	1874760000
TM 203 For Cables Cross Section 2.5-10mm²		
TM 203/12	500	1798510000
TM 203/15	500	1798490000
TM 203/18	500	1798480000
TM 203/20	500	1798470000
TM 203/30	200	1874770000
Sleeves (Halogen Free)		Order No. (Blank)
TM 1 For Cables Cross Section 0.5-1.5mm²		
TM 1/12 HF/HB	1000	1719780000
TM 1/18 HF/HB	1000	1719790000
TM 2 For Cables Cross Section 0.75-2.5mm²		
TM 2/12 HF/HB	1000	1719800000
TM 2/18 HF/HB	1000	1719810000
TM 3 For Cables Cross Section 2.5-6mm²		
TM 3/12 HF/HB	500	1719820000
TM 3/18 HF/HB	500	1719830000

Cable Marker Holders


Sleeves (Halogen Free)	Qty	Order No. (Blank)
TMX HF Sleeve	500	1748820000
CLI-TM 10/33	100	1763270000

Inlay Tags TM-I: for use with Transparent Sleeve TM

- Material: PA 66
- Flammability class acc. to UL 94 V2
- - 40°C ... +100°C

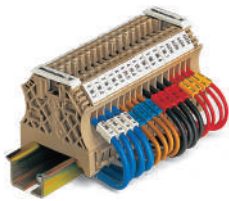


TM-I

Type	Order No. (Blank)	Qty / Pack	Order No. (Custom Printed)	Markers Per Card
TM - 1 12 Neutral	1718411044	320	1718420000	64
TM - 1 15 Neutral	1609981044	400	1609990000	80
TM - 1 18 Neutral	1718431044	320	1718440000	64
TM - 1 20 Neutral	1680411044	400	1680420000	80
TM - 1 30 Neutral	1876390000	300	1876320000	60

SlimFix Cable Markers

- Material: Wemid/Polyamide
- Flammability class to UL94 V0/V2
- - 50°C... +120°C/-40°C...100°C
- Simply Slip marker onto cable
- Halogen free



Type	Conductor Outer Ø (Max) mm ²	Conductor Cross Section mm ²
SF 1	1.6 - 2.1 (2.7)	0.5 - 0.75
SF 2	2.1 - 2.9 (3.4)	0.75 - 1.5
SF 3	2.9 - 3.6 (4.5)	1.5 - 2.5
SF 4	3.6 - 4.5 (6.0)	2.5 - 4.0
SF 4.5	4.1 - 4.9	4.0 - 6.0
SF 5	4.7 - 5.8 (6.8)	6.0 - 10.0
SF 6	5.8 - 7.0 (8.5)	10.0 - 16.0
SFX	From 7.0	From 16.0

Type	Min. Conductor Outer Ø mm ²	Min. Conductor Cross Section mm ²	Order No. (Blank)	Qty / Pack	Order No. (Custom Printed)	Markers Per Card
Length 12mm						
SF 1/12	1.6 ... 2.1	0.5 ... 0.8	1919390000	400	1919420000	80
SF 2/12	2.1 ... 2.9	0.8 ... 1.5	1919490000	400	1919500000	80
SF 3/12	2.9 ... 3.6	1.5 ... 2.5	1919540000	320	1919510000	64
SF 4/12	3.6 ... 4.5	2.5 ... 4.0	1919600000	320	1919610000	32
SF 5/12	4.5 ... 5.8	4.0 ... 6.0	1919650000	320	1919660000	32
Length 21mm						
SF 1/21	1.6 ... 2.1	0.5 ... 0.8	1918630000	400	1918640000	80
SF 2/21	2.1 ... 2.9	0.8 ... 1.5	1918690000	400	1918650000	80
SF 3/21	2.9 ... 3.6	1.5 ... 2.5	1918910000	320	1918880000	64
SF 4/21	3.6 ... 4.5	2.5 ... 4.0	1919080000	192	1919050000	48
SF 4.5/21	4.1 ... 4.9	4.0 ... 6.0	1919020000	96	1918990000	32
SF 5/21	4.7 ... 5.8	6.0 ... 10	1919140000	160	1919110000	32
SF 6/21	5.8 ... 7.0	10 ... 16	1919190000	160	1919160000	32

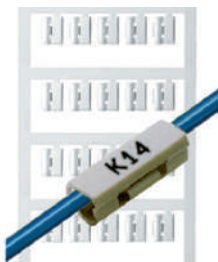
SlimFix Cable Markers for Larger Cables



Type	Order No. (Blank)	Qty / Pack	Order No. (Custom Printed)	Markers Per Card
SFX 9/24 Neutral White	1696140001	160	1852480000	32
SFX 11/60 MC Neutral Grey	1860130000	60	186014GRAU	12
SFX 11/60 MC Neutral Yellow	1860150000	60	186014GELB	12
SFX 11/60 MC Neutral White	1860120000	60	186014WEIS	12

SlimFix Clip

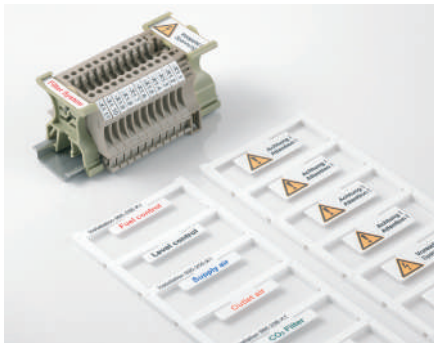
- Halogen-free material
- Flammability class V2
- Can be retro-fitted
- Sold Per Card
- Simply Clip-on markers to cables



Type	Conductor Outer Ø (Max) mm ²		Conductor Cross Section mm ²			
SFC 0	1.5 ... 2.5 mm ²		0.5 - 1.0 mm ²			
SFC 1	2.0 ... 3.5 mm ²		0.75 - 2.5 mm ²			
SFC 2	2.5 ... 5.0 mm ²		2.5 - 4.0 mm ²			

Type	Min. Conductor Outer Ø mm ²	Min. Conductor Cross Section mm ²	Order No. (Blank)	Qty / Pack	Order No. (Custom Printed)	Markers Per Card
Length 12mm						
SFC 0/12	1.5 ... 2.5	0.5 ... 1.0	1813130000	200	1813180000	40
SFC 1/12	2.0 ... 3.5	0.75 ... 2.5	1747320001	200	1752720001	40
SFC 2/12	2.5 ... 5.0	2.5 ... 4.0	1758320001	120	1763480001	24
Length 21mm						
SF 0/21	1.5 ... 2.5	0.5 ... 1.0	1813190000	200	1813230000	40
SF 1/21	2.0 ... 3.5	0.75 ... 2.5	1779080001	200	1779090000	40
SF 2/21	2.5 ... 5.0	2.5 ... 4.0	1805810000	120	1805800000	24
Length 30mm						
SFC 0/30	1.5 ... 2.5	0.5 ... 1.0	1813240000	150	1813280000	30
SFC 1/30	2.0 ... 3.5	0.75 ... 2.5	1805760000	150	1805750000	30
SFC 2/30	2.5 ... 5.0	2.5 ... 4.0	1805870000	90	1805860000	18

Tags for Terminal Group Marking

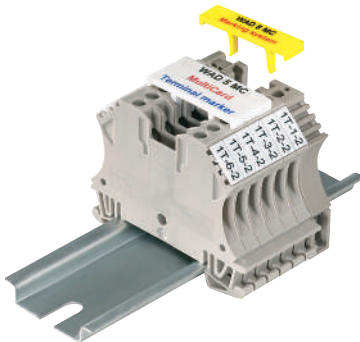


For Cable Marker WKM or SchT 5 or SchT 5S

Technical Data	
Material	Polyamide 66 Halogen Free
UL 94 Flammability Rating	V2
Temperature Rating	-40°C to 100°C
Printing	Black (Standard) Coloured Available

Type	Order No. (Blank)	Colour	Order No. (Printed)	Mat Quantity
ELS 6/30 MC SDR	1045570000	White	104566WEIS	16
ELS 7/40 MC SDR	1045640000	White	104570WEIS	8
ELS 16/40 MC SDR	1045620000	White	104569WEIS	8

WAD Marker & Cover

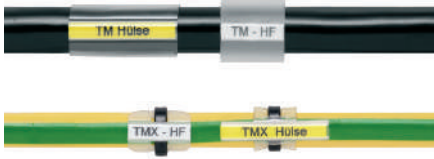


For W Series Feedthrough terminals WDU 2.5, 4, 6, 10 and End BracketsWEW 35/2 and ZEW 35/2

Technical Data	
Material	Polyamide 66 Halogen Free
UL 94 Flammability Rating	V2
Temperature Rating	-40°C to 100°C
Printing	Black (Standard) Coloured Available

Type	Order No. (Blank)	Colour	Order No. (Printed)	Mat Quantity
WAD 5 MC NE WS	1112910000	White	111293WEIS	12
WAD 5 MC NEGE	1112920000	Yellow	111293GELB	12
WAD 8 MC NE WS	1112940000	White	111297WEIS	12
WAD 8 MC NE GE	1112950000	Yellow	111297GELB	12
With Pre-Printed Lightning Flash				Box Quantity
WAD 5 MC B GE/SW		Yellow	1120450000	48
WAD 8 MC B GE/SW		Yellow	1120470000	48

Transparent Sleeves



Halogen Free

Technical Data	
Material	Polyethelene LD
UL 94 Flammability Rating	HB
Temperature Rating min/max	-20°C continuous/80°C continuous
Material colour	Transparent

Type	Order No.	Box Quantity	Application/Cross Section
TM1 For Cables Cross Section 0.25-1.5mm²			
TM 1/12 HF/HB	1719780000	1000	0.25-1.5mm ²
TM 1/18 HF/HB	1719790000	1000	0.25-1.5mm ²
TM2 for Cables Cross Section 0.5-2.5mm²			
TM 2/12 HF/HB	1719800000	1000	0.5-2.5mm ²
TM 2/18 HF/HB	1719810000	1000	0.5-2.5mm ²
TM3 for Cables Cross Section 2.5-10mm²			
TM 3/12 HF/HB	1719820000	500	2.5-10mm ²
TM 3/18 HF/HB	1719830000	500	2.5-10mm ²

Twin Mark Heat Shrink Sleeves



Technical Data	
Material	Polyolefin, halogen-free according to VDE 0472-815
Temperature Rating	-40°C to 105°C
Flammability	VDE 5510-2 drop-forming class ST2, EN 50343; Fed. STD-228, method 5221
Print Durability	MIL-M-81531, MIL-STD-202, method 215J If printed with Weidmüller THM-Plus or HSS 2001 printer and ribbon R 83/300

Selection Table HSS-HF

Type	Wire Diameter	Conductor
HSS-HF1/8"1.8-2.8	1.8 - 2.8 mm	0.5 - 1.5 mm ²
HSS-HF3/16"2.8-4.2	2.8 - 4.2 mm	1.5 - 4.0 mm ²
HSS-HF1/4"4.2-5.8 4.	2 - 5.8 mm	4.0 - 10.0 mm ²
HSS-HF3/8"5.8-8.0	5.8 - 8.0 mm	10.0 - 16.0 mm ²
HSS-HF1/2"8.0-11.0	8.0 - 11.0 mm	25.0 - 35.0 mm ²
HSS-HF3/4"11.0-17.0	11.0 - 17.0 mm	35.0 - 70.0 mm ²
HSS-HF1"17.0-23.0	17.0 - 23.0 mm	70.0 - 120.0 mm ²

Laser Engraved 316 Grade Stainless Steel Cable Markers

- Material 316 Stainless Steel
- Printing Black



Type	Grade	Order No.	Cable Marker Dimensions mm H x L x T
Stainless Steel - 2 Hole	316	7940013175	SS316TAG 10X89X0.4MM PRINT
Stainless Steel - 2 Hole	316	7940013176	SS316TAG 19X89X0.4MM PRINT

316 Grade Stainless Steel Cable Ties

- Weidmuller stainless steel ties are designed to secure hoses, cables, poles, pipes, and more when harsh environmental conditions may adversely affect the bundling application.
- Used where corrosion, vibration, weathering, radiation, and temperature extremes are a concern, Weidmuller's stainless steel ties can be used in virtually any indoor, outdoor, and underground application.
- Self locking, ball bearing mechanism for quick and easy installation, either by hand or by tensioning tool.
- Material: Stainless steel type 316
- Pack Size 100



Type	Grade	Min. Tensile Strength kg / lbs	Order No.	Length In / mm	Width In / mm	Cable Marker Dimensions mm H x L x T
Stainless Steel Tie	316	56 / 123	7940040122	4" / 100	0.18" / 4.6	4.6 x 100 Cable Tie
Stainless Steel Tie	316	56 / 123	7940013010	6" / 150	0.18" / 4.6	4.6 x 150 Cable Tie
Stainless Steel Tie	316	56 / 123	7940040132	8" / 200	0.18" / 4.6	4.6 x 200 Cable Tie
Stainless Steel Tie	316	56 / 123	7940013011	12" / 300	0.18" / 4.6	4.6 x 300 Cable Tie
Stainless Steel Tie	316	110 / 250	7940013012	10" / 250	0.31" / 7.9	7.9 x 250 Cable Tie
Stainless Steel Tie	316	110 / 250	7940013013	24" / 600	0.31" / 7.9	7.9 x 600 Cable Tie
Stainless Steel Tie	316	110 / 250	7940013014	39" / 1000	0.31" / 7.9	7.9 x 1000 Cable Tie

Engraved Acrylic Labels

- For pricing of sizes not shown, please calculate the area (CM2) required and apply the price of the next size up from the tables below.
- Edge bevelling and standard mounting holes at no extra cost. Alternate colour combinations subject to availability.
- For non rectangular shapes, cutouts, push-buttons and complex design P.O.A
- Quantity break pricing where applicable, available on application.
- Available with or without adhesive backing

DISTRIBUTION BOARD 6

Alternate to Traffolyte

Technical Data	
Material	Laminated, UV Stable, Impact Acrylic
Thickness	2-ply 1.6mm (1/16")
Usage	Interior/Exterior Signage, Control Panels Legend Plates and Personal Identification
Features	Long-term durability, wear, impact and fade resistant

Area CM2 (LxW)	White with Black Text	White with Red Text	Blue with White Text	Yellow with Black Text	Red with White Text	QTY
25	7940009885	7940012996	7940009998	7940012986	7940009988	1
50	7940009886	7940012998	7940009999	7940012987	7940009989	1
100	7940009887	7940013000	7940010717	7940012988	7940009990	1
150	7940009888	7940013001	7940010718	7940012989	7940009991	1
300	7940009889	7940013002	7940010720	7940012990	7940009992	1
600	7940009890	7940013003	7940010723	7940012991	7940009993	1
900	7940009891	7940013004	7940012981	7940012992	7940009994	1
1200	7940009892	7940013005	7940012983	7940012993	7940009995	1
1800	7940009893	7940013006	7940012984	7940012994	7940009996	1
2400	7940009894	7940013007	7940012985	7940012995	7940009997	1

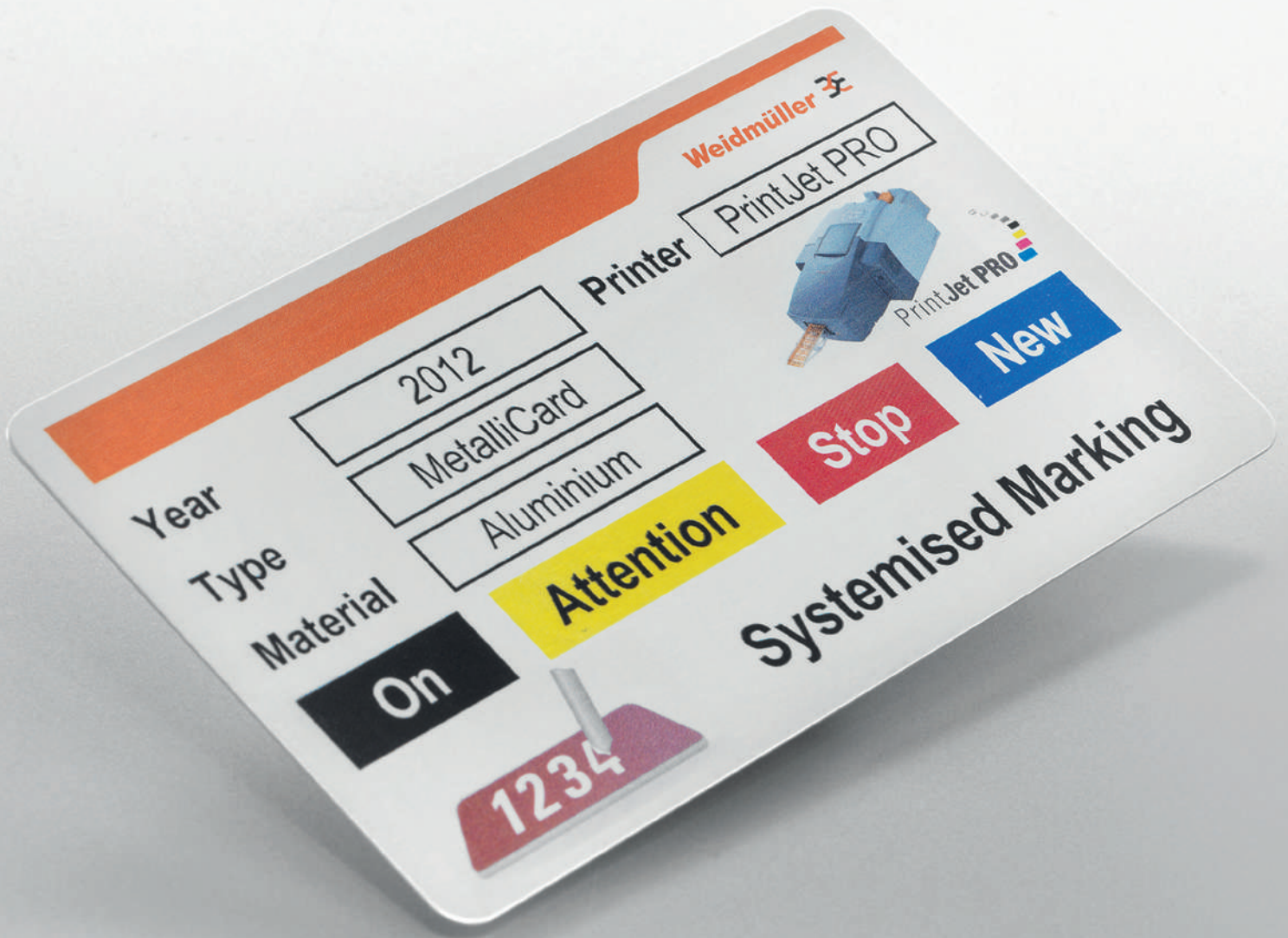
Engraved Legend Plates 316 Stainless Steel



Technical Data	
Material	Polyamide 66 Halogen Free
UL 94 Flammability Rating	V2
Temperature Rating	-40°C to 100°C
Printing	Black (Standard) Coloured Available

Type	Grade	Order No.	Application
SS316TAG 2B	316	7940038881	80 x 20 x 1.5 Print
SS316TAG 2B	316	7940038880	100 x 20 x 1.5 Print
SS316TAG 2B	316	7940038882	120 x 25 x 1.5 Print
SS316TAG 2B	316	7940038879	150 x 30 x 1.5 Print
SS316TAG 2B	316	7940038878	200 x 50 x 1.5 Print

F



Weidmüller 

Systemised marking

Metal markers in aluminium and stainless steel

www.weidmuller.com.au

Individual processing

The professional system for every standard

Superior components in a comprehensive product line

Our labelling system allows you to label with precision and speed – without losing track. Our completely matched line of materials, sizes and mounting options cover solutions for all of your particular operational needs.

The systematic use of our PrintJet, M-Print® PRO and update kit enables you to custom design and process facility labelling for all of your system components. The result is a consistently outstanding marking system.

The benefits for you

- Quality: durable materials for extreme conditions
- Customised: perfectly matched system components provide the best variety
- Efficient: tailor-made solutions from a single source
- Professional: in-house control of all marking processes

Technical specifications

	Description
Tag material	anodised aluminium (AL) or stainless steel 1.4301 (ST)
Temperature range	between -55 °C and +130 °C
Thick	0,5 mm
Primer	100 impregnated cloths and hermetically sealed
Update kit	CD with firmware and configuration data for MetalliCard, programming device, USB cable, multilingual manual, inlay CC-M 85/54, 10 pieces of CC-M 85/54 AL Available for PrintJet PROs, from delivery date July 2010, with serial number 3653 (last 4 digits) and higher
Service kit	Update Kit + : requires mechanical update on the PrintJet PRO. The printer should be returned. PrintJet PROs with serial number lower than 3653 (last 4 digits)

F



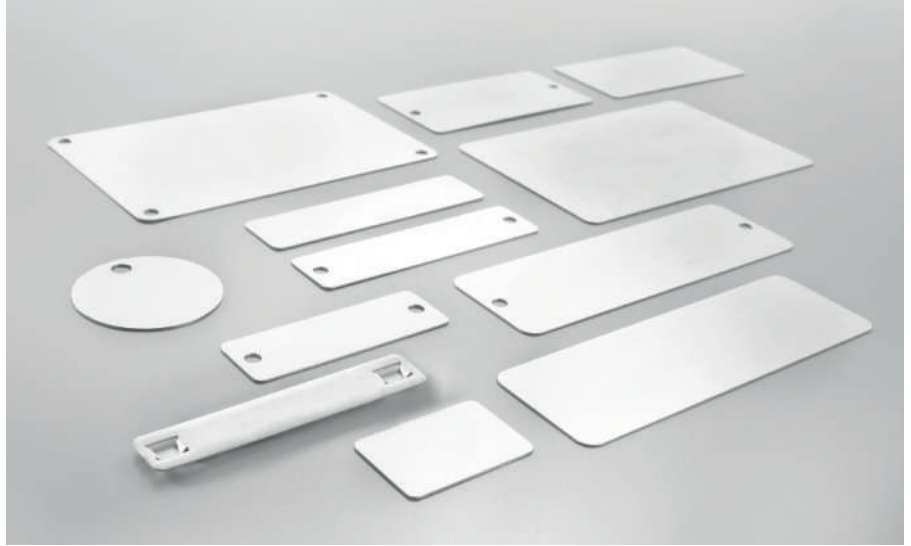
Update kit / Service kit: The PrintJet PRO's firmware ensures that MetalliCards are processed properly.



Precise colour printing across multiple tags of the same type – thanks to an inlay-secured printing process.



The universal inlay is designed to accept eight different tag types and is particularly suitable for printing small batch jobs.



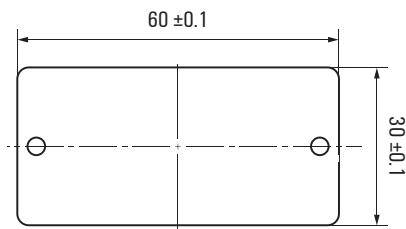
Type description

Type	Description
CC-M 30/60 2x3 AL	ClipCard
CC-M 30/60 2x3 AL	MetalliCard
CC-M 30/60 2x3 AL	30 mm wide
CC-M 30/60 2x3 AL	60 mm high
CC-M 30/60 2x3 AL	2 holes
CC-M 30/60 2x3 AL	3.3 mm hole diameter
CC-M 30/60 2x3 AL	Aluminium
CC-M 30/60 2x3 ST	Stainless steel

Tags

Type	Size	Holes	Mat.No.	QTY
CC-M 85/54 AL	85 x 54 mm	-	1327600000	40
CC-M 85/54 ST	85 x 54 mm	-	1327620000	40
CC-M 27/18 AL	27 x 18 mm	-	1327630000	200
CC-M 27/18 ST	27 x 18 mm	-	1327640000	200
CC-M 85/27 AL	85 x 27 mm	-	1327650000	80
CC-M 85/27 ST	85 x 27 mm	-	1327670000	80
CC-M 30/60 AL	30 x 60 mm	-	1327680000	100
CC-M 30/60 ST	30 x 60 mm	-	1327690000	100
CC-M 15/60 AL	15 x 60 mm	-	1327700000	200
CC-M 15/60 ST	15 x 60 mm	-	1327720000	200
CC-M 15/45 AL	15 x 45 mm	-	1327730000	200
CC-M 15/45 ST	15 x 45 mm	-	1327740000	200
CC-M DIA 30 AL	ø 30 mm	4.2 mm (single)	1327750000	200
CC-M DIA 30 ST	ø 30 mm	4.2 mm (single)	1327770000	200
SFX-M 11/60 AL	11 x 60 mm	-	1327780000	50
SFX-M 11/60 ST	11 x 60 mm	-	1327790000	50
CC-M 85/54 4X3 AL	85 x 54 mm	3.3 mm (quadruple)	1327800000	40
CC-M 85/54 4X3 ST	85 x 54 mm	3.3 mm (quadruple)	1327820000	40
CC-M 85/27 2X3 AL	85 x 27 mm	3.3 mm (double)	1327830000	80
CC-M 85/27 2X3 ST	85 x 27 mm	3.3 mm (double)	1327840000	80
CC-M 30/60 2X3 AL	30 x 60 mm	3.3 mm (double)	1327850000	100
CC-M 30/60 2X3 ST	30 x 60 mm	3.3 mm (double)	1327870000	100
CC-M 15/60 2X3 AL	15 x 60 mm	3.3 mm (double)	1327880000	200
CC-M 15/60 2X3 ST	15 x 60 mm	3.3 mm (double)	1327890000	200
CC-M 15/45 2X3 AL	15 x 45 mm	3.3 mm (double)	1327900000	200
CC-M 15/45 2X3 ST	15 x 45 mm	3.3 mm (double)	1327920000	200

F



Inlay

Type	Mat.No.	QTY
INLAY CC-M 85/54	1341030000	1
INLAY CC-M 27/18	1341040000	1
INLAY CC-M 85/27	1341050000	1
INLAY CC-M 30/60	1341070000	1
INLAY CC-M 15/60	1341080000	1
INLAY CC-M 15/45	1341090000	1
INLAY CC-M DIA 30	1341100000	1
INLAY SFX-M 11/60	1341110000	1
INLAY CC-M UNIVERSAL	1341120000	1

Double-sided self-adhesive labels

Type	Mat.No.	QTY
DKB CC 85/54	1175850000	100
DKB CC 85/27	1226620000	100
DKB CC 30/60	1341130000	100
DKB CC 27/18	1341140000	320
DKB CC 15/60	1341150000	160
DKB CC 15/45	1341170000	240
DKB CC DIA 30	1341180000	200

Accessories

Type	Mat.No.	QTY
UPDATE KIT PJPRO METAL	1344850000	1
PRIMER CC-M	1341200000	1

We cannot guarantee that there are no mistakes in the publications or software provided by us to the customer for the purpose of making orders. We make every effort to correct such errors once they are made known to us. Our General Terms of Delivery apply to all orders. These terms can be viewed on the Group Company's web page where you make your order. We would also be happy to send you them.

*For Custom Print Service please contact for quote

Identification

Weidmuller Delivers Total Labelling and Marking Solutions

Now you can order all your labelling and marking requirements from a single source - Weidmuller. We have used our decades of experience as a leading provider of intelligent solutions for electrical connectivity, functional electronics and communication electronics to develop an outstanding range of labelling solutions that specifically meet the needs of the electrical and general industries.

Labelling is a basic prerequisite of fast and reliable maintenance in the electrical and civil industries. It aids rapid identification and tracing, and is instrumental for successful troubleshooting.

Weidmuller offers a comprehensive range of labels and markers in different materials, colours, sizes and formats. We also provide both laser engraving and router options on various materials including stainless steel for commercial signage and identification. No matter what type of label or marker is needed, chances are we have the right solution.

Plus, backed by the technical know-how, experience, and strength of Weidmuller you can rest assured that your labelling needs will be met accurately and quickly. In fact, our labelling solutions are already in daily use in thousands of locations around the world.

Premium Quality and Reliability

Our comprehensive range of labels and markers provide undisputed quality and reliability. Smudge-proof and scratch resistant they are perfect for heavy-duty environments.

Barcodes, graphics, photos and logos can be easily integrated in the label design. What's more, we can deliver both large batches and smaller numbers of long lasting labels and markers, quickly and efficiently.

Processing is easy. Just supply us with your electronic list of numbers for plotting in Excel spreadsheet, CAD drawing or sketch and we will do the rest.

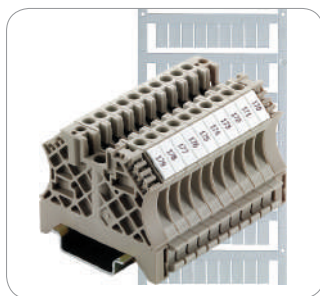
For faster processing ask about our free M Print software tool, custom label quote form and price list.

Extensive Product Range

You can choose from a portfolio of over 150 standard variants of markers and labels. Constantly expanding, our range features a wide selection of terminal, wire and cable markers, device, equipment and CableLine® markers as well as labels including heat shrink tubing.

Available in a variety of different materials, colours, sizes and formats, the labels and markers are designed to meet the most rigorous industrial indoor and outdoor applications. We can also provide labels for terminals and components from other manufacturers.

Terminal Markers



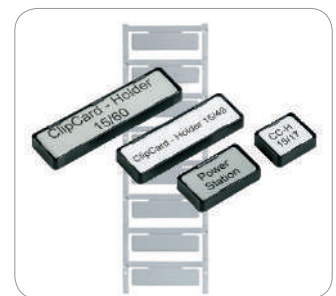
Tag Carrier



Wire and Cable Markers



Device Markers





Custom Print and Identification

Should you require a completely tailored solution then Weidmüller has the equipment and technical expertise to deliver your customised markers and labels.

Our Universal Professional CO² Laser is perfect for printing on stainless steel and acrylic material. With a bed size of 800mm x 450mm it is more than capable of meeting your needs.

For larger or high volume projects our Procam Mityboy Evo 11 Router is ideal. It handles sheet sizes up to 2400mm x 1200mm to manufacture the solution you require. Apart from identification, Weidmüller can also deliver customised routing solutions in various shapes and materials.

Regardless of what you require, we have the equipment and expertise to deliver your tailored solution on time, every time. Please contact Weidmüller to discuss your needs.

Material Options

Our range meets industry requirements including those for Halogen Free and VO Flammability. And, offering complete flexibility, you can print on a wide selection of materials:

- Polyamide/Multicard
- Stainless steel
- Brass
- Aluminium
- Styrene
- Polyester
- Acrylic
- Heat Shrink

Equipment Capability

Our state-of-the-art equipment and technical know-how ensure we deliver the markers you need. Our equipment detects structures, positions and contours to provide a long-life, quality marking.

- Laser printer
- Ink-jet printer
- Thermal transfer system

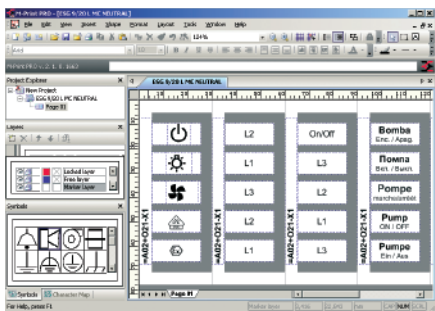
Custom Print and Identification



Equipment Capability



How to order Custom Print Markers



Multicards

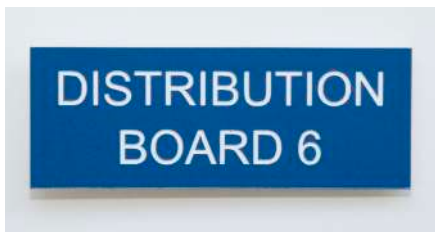
Step 1. Choose the type of markers required by part number and description.

Step 2. Create a single column spreadsheet with alphanumeric requirements of marker.

Step 3. If multiples of each number is required, please add another adjacent column with required multiple.

Alternatively, if repeated sets are required, please indicate on spreadsheet adjacent to column that the set is to be repeated by the required number.

Step 4. Email order with spreadsheet attached to sales@weidmuller.com.au or your local Weidmuller distributor. For details please refer to back page of this catalogue.



Engraved Acrylic (Standard Text and Size)

Step 1. Determine label size by Area (cm²).

Step 2. Choose part number from table on page 15, by label size and colour acrylic required (surface colour/text).

Step 3. Email label requirements (preferably on spreadsheet), together with order, to sales@weidmuller.com.au or your local Weidmuller distributor. For details please refer to back page of this catalogue. Order should contain part number required, font size of each line of text to be marked on label, and details of mounting holes (if required).



316 Grade Stainless Steel Cable Markers

Step 1. Choose part number (by marker size).

Step 2. Email order with marker requirements (preferably on spreadsheet), including part number to sales@weidmuller.com.au or your local Weidmuller distributor. For details please refer to back page of this catalogue.

