

L V O V E R H E A D



L V O V E R H E A D

SECTION	PAGE
LVABC CONNECTORS	
TTD Series Insulation Piercing Connectors	01
NTD Series Insulation Piercing Connectors	02
TTDC & NTDC Series Insulation Piercing Connectors for Covered Conductor Thick (CCT)	03
In-line Piercing Connector & Industrial Mains Box	04
Multi-tap Insulation Piercing Connectors & Earthing	05
MSC Series Multi-tap Connector	06
LVABC MAINS FUSE SWITCHES & ACCESSORIES	
LVABC Mains Fuse Switches	07
Fuse Switches Accessories	08
APR 160 Fuse Switch	09
APR 630 Fuse Switch	10
APR 630-3 Fuse Switch	11
DPA Series Fuse Holders	12
SERVICE FITTINGS	
House Service Connectors	13
House Service Connectors Double Bolt	14
CAW & CCW Series Service Connectors	15
CAW & CCW Series Service Connectors Double Bolt	16
Neutral Bonding Alternatives	17
Mains Connection Boxes	18
PFV Series Service Fuse Holders	19
PFV Series Service Fuse Holders With ID Plate	20
LVABC CONNECTORS	
Water Blocking Connector	21
PRE-INSULATED FITTINGS	
MJPB & MJPT Series Links	22
Pre-crimped Links & Tools - Application Tooling MP-10 SIMPI	23
MEPCN Series	24
CPTAU & CPTA Series Lugs	25
MECHANICAL FITTINGS	
PA, PC & BCST Series Service Termination Clamps	26
SC & PA Series Mains Termination & Suspension Clamps	27
HARDWARE	
J & Q Hooks & Brackets	28
Weak Links & Eye Nuts	29



TTD151XFA



TTD301XFA

For Connecting INSULATED MAINS to INSULATED MAINS or INSULATED SERVICES

The Sicame TTD range of insulation piercing connectors (IPCs) provide a fast, convenient and reliable method of connecting overhead low voltage mains to services or other mains. All common types of conductors can be interconnected, including insulated aluminium or copper. The connectors have been tested to AS4396 and are approved for use by Australian power distribution utilities (Consult for further details).

TTD SERIES INSULATION PIERCING CONNECTOR

APPLICATION

Mains cable: Insulated copper or aluminium

Tap cable: Insulated copper or aluminium

FEATURES

- + Provides a fully sealed, waterproof connection
- + No need to strip cable to make the connection
- + Simultaneous piercing on main & tap
- + Torque controlling shear heads on all bolts
- + Tightening bolts do not come into contact with live components
- + Captive end cap for protection of tap cable, which can be mounted on either side.
- + Fully bimetallic
- + Stainless steel fasteners

TESTING SPECIFICATION

Tested to AS4396

INSTALLATION NOTES

When using 2 bolt connectors from this range, each bolt must be tightened a 1/4 to 1/2 turn alternately, until the shear head operates.

For tightening the shear head bolts, use only a 13mm AF, six sided hexagon socket (17mm AF for models TTD431XFA, TTD451XFA & TTD551FJA models).

For double insulated cables, the outer sheath should be removed before applying the connector.

Product Number	Mains Cable (mm ²)	Branch Cable (mm ²)	Number of Bolts	Bolt Size	Pack Size
TTD051XFA	16 to 95	1.5 to 10	1	M8	12
TTD101XFA	6 to 54	6 to 35	1	M8	12
TTD151XFA	16 to 95	6 to 35	1	M8	12
TTD201XFA	35 to 95	25 to 95	1	M8	12
TTD241XFA	50 to 150	6 to 35	1	M8	12
TTD251XFA	50 to 150	35 to 95	1	M8	8
TTD301XFA	25 to 95	25 to 95	2	M8	10
TTD351XFA	50 to 150	35 to 95	2	M8	4
TTD401XFA	50 to 185	50 to 150	2	M8	4
TTD431XFA	70 to 240	16 to 95	2	M10	4
TTD451XFA	95 to 240	95 to 240	2	M10	4
TTD551FJA*	120-380	95-240	2	M10	4

*Galvanised fasteners

PLEASE NOTE: The products on this page can be ordered with high visibility shear-off identification tags. To order the products with these identification tags please add the suffix **E** to the end of the product number when ordering.



Recommended tool for all products: RPS13/17-6H or RPS13/17-6SH



NTD SERIES



NTD101F



NTD301XFA



NTD351AXFA

For connecting BARE MAINS to INSULATED MAINS or INSULATED SERVICES

The Sicame NTD range of insulation piercing connectors provide a fast, convenient and reliable method of connecting overhead low voltage mains to services and other mains. All common types of conductors can be interconnected, including bare aluminium or copper mains. The connectors have been tested to relevant standards and are approved for use by Australian power distribution utilities (Consult for further details).

NTD SERIES INSULATION PIERCING CONNECTOR

APPLICATION

Mains: Bare copper or aluminium
Tap: Insulated copper or aluminium

FEATURES

- + Provides a fully sealed, waterproof connection on the tap.
- + No need to strip cable to make the connection
- + Simultaneous piercing on main & tap
- + Torque controlling shear heads on all bolts
- + Tightening bolts do not come into contact with live components
- + Captive end cap for protection of tap cable, which can be mounted on either side.
- + Fully bimetallic
- + Stainless steel fasteners

INSTALLATION NOTES

When using 2 bolt connectors from this range, each bolt must be tightened a 1/4 to 1/2 turn alternately, until the shear head operates.

For tightening the shear head bolts, use only a 13mm AF, six sided hexagon socket (17mm AF for models NTD431XFA and NTD451XFA).

For double insulated cables, the outer sheath should be removed before applying the connector.

Product Number	Bare Conductor			Insulated Cable (mm²)	No. of Bolts	Bolt Size	Pack Size
	Type	Size (mm²)	Diameter (mm)				
Connectors for Bare Copper Mains							
NTD101F *	Cu	7 to 54	3.0 to 10.0	6 to 35	1	M8	12
NTD301XFA	Cu	7 to 95	3.0 to 12.5	35 to 95	2	M8	10
NTD351XFA	Cu	50 to 150	9.0 to 15.7	35 to 95	2	M8	10
NTD401XFA	Cu	50 to 150	9.0 to 15.7	50 to 150	2	M8	4
Connectors for Bare Aluminium Mains							
NTD101AF *	Alu	6 to 54	3.0 to 9.5	6 to 35	1	M8	12
NTD301AXFA	Alu	7 to 95	3.0 to 12.5	35 to 95	2	M8	10
NTD351AXFA	Alu	50 to 150	9.5 to 15.8	35 to 95	2	M8	10
NTD401AXFA	Alu	50 to 150	9.5 to 15.8	50 to 150	2	M8	4
NTD431AXFA	Alu	95 to 240	12.5 to 19.6	35 to 95	2	M10	4
NTD451AXFA	Alu	95 to 240	12.5 to 19.6	95 to 150	2	M10	4
*Galvanised fasteners							

PLEASE NOTE: The products on this page can be ordered with high visibility shear-off identification tags. To order the products with these identification tags please add the suffix **E** to the end of the product number when ordering.



Recommended tool for all products: RPS13/17-6H or RPS13/17-6SH





TTDC 45501 FA



NTDC 45501 FA



TYPICAL APPLICATION



NTDC 45401 FA CCT ER

TTDC SERIES INSULATION PIERCING CONNECTORS FOR COVERED CONDUCTOR THICK (CCT)

APPLICATION

IPC for branch and through connections on covered overhead networks.

CONDUCTOR TYPES

Covered AAC and AAAC conductor with insulation thicknesses in the range 2mm to 5.5mm.

- + TTDC range—CCT to CCT
- + NTDC range—Bare conductor to CCT

FEATURES

- + Provides a fully sealed, waterproof connection
- + No need to strip cable to make the connection
- + Simultaneous piercing on main & tap
- + Torque controlling shear heads on all bolts
- + Tightening bolts do not come into contact with live components
- + Captive end cap for protection of tap cable, which can be mounted on either side.
- + Marked with coloured label, identifying conductor size and kV.
- + Red high visibility shear-off identification tags to identify it is a high voltage IPC connector. Can be seen from the ground.

INSTALLATION NOTES

When using 2 bolt connectors from this range, each bolt must be tightened a 1/4 to 1/2 turn alternately, until the shear head operates. For tightening the shear head bolts, use only a six sided hexagon

Product Number	Mains Cable (mm²)	Branch Cable (mm²)	Maximum Insulation Thickness (mm)	Max Cable Diameter (mm)		Bolts	Shear Head AF (mm)	Shear Torque (Nm)
				Main	Branch			
Connectors for CCT to CCT								
TTDC 45401 FA - CCT	40 to 120	40 to 120	4.5	22.5	22.8	2 x M10	17	25
TTDC 45501 FA - CCT	95 to 240	95 to 185	4.5	29	26.3	2 x M10	17	37
TTDC 45531 FA - CCT	95 to 300	35 to 95	4.5	31.1	21.3	2 x M10	17	37
Connectors for Bare Aluminium Conductor to CCT								
NTDC 45401 AFA - CCT	50 to 150	50 to 120	4.5	22.8	n/a	2 x M10	17	25
NTDC 45501 AFA - CCT	95 to 240	95 to 185	4.5	26.3	n/a	2 x M10	17	37
Connectors for Bare Copper Conductor to CCT								
NTDC 45401 FA - CCT	50 to 150	50 to 120	4.5	22.8	n/a	2 x M10	17	25
NTDC 45501 FA - CCT	95 to 240	95 to 185	4.5	26.3	n/a	2 x M10	17	37

PLEASE NOTE: The products on this page can be ordered with **RED** high visibility shear-off identification tags. To order the products with these identification tags please add the suffix **ER** to the end of the product number when ordering.





ILC 695

ILC IN-LINE PIERCING CONNECTOR

A general purpose in-line piercing connector for aluminium or copper insulated cable in the range of 6 - 95 mm².

- + Piercing connectors both sides
- + Employs proven shear head technology
- + Fully waterproof
- + Complies with relevant sections of AS4396
- + Fully insulated - no exposed live parts
- + No crimp tools required
- + Fits mains box below

Product Number	Cable Range (sq mm)	Bolt Head A/F (mm)	Pack Size (pcs)
ILC 695	6 to 95	13	10
ILC 635	6 to 35	13	10
ILC 3595	35 to 95	13	10

INSTALLATION NOTES

Use only a 13mm AF, six point hexagon socket to tighten bolts.

All other connections made on the service and consumers cable must also be waterproof to prevent moisture ingress through the cable into the connector.



MCB3/4ILC

3 PHASE INDUSTRIAL MAINS BOX FOR IN-LINE PIERCING CONNECTORS

- + Fully insulated connection system
- + IP66 rated
- + Designed to house the ILC connectors (see above)
- + Fully UV Stabilised
- + Protects connectors from accidental damage or contact
- + Ideal for connecting commercial and industrial 200Amp services
- + Rear entry of consumer mains cable
- + Protects consumer mains cables from UV
- + Water shedding
- + Attractive design
- + Supplied complete with 4 x ILC connectors

Product Number	Description	Cable Size (mm ²)	Number of ILC connectors included	Pack Size (pcs)
MCB3/4ILC	Three phase Industrial MCB supplied with connectors	6 to 95	4	4
MCB3/4ILC3595	Three phase Industrial MCB supplied with connectors	35 to 95	4	4

PLEASE NOTE: The products on this page can be ordered with high visibility shear-off identification tags. To order the products with these identification tags please add the suffix **E** to the end of the product number when ordering.



Recommended tool for all products: RPS13/17-6H or RPS13/17-6SH



MULTI-PORTS & EARTHING

EPC SERIES - EARTH/TEMPORARY BOND



Mains: Insulated copper or aluminium
Bond: To any suitable cable using integral lug connecting bolt
+ Fully heat cycle and short circuit tested

Product Number	Description		
	Mains Cable Range (mm ²)	Bonding Bolt Size	Pack Size
EPC1-401	50 to 185	M12	12
Product supplied with suitable IPC			

TT2D SERIES - TWIN TAP IPC



TT2D87XF3A

Mains: Insulated copper or aluminium
Branch: Insulated copper or aluminium

Product Number	Description		
	Mains Cable Range (mm ²)	Branch Cable Range (mm ²)	Pack Size
TT2D83XF3A	25 to 95	2 x 6 to 35	12
TT2D87XF3A	50 to 150	2 x 6 to 35	12

TTDx-CC SERIES - TEST / EARTH TAP



TTD2-CCXA

Mains: Insulated copper or aluminium
Branch: Bayonet style connecting port for temporary earths or test points
+ includes phase/neutral identification tags

Product Number	Description		
	Mains Cable Range (mm ²)	Tap-off Fitting Type	Pack Size
TTD1-CCXA	16 to 35	4mm male bayonet	10
TTD2-CCXA	35 to 95	4mm male bayonet	10
TTD3-CCXA	50-150	4mm male bayonet	10

PLEASE NOTE: The products on this page can be ordered with high visibility shear-off identification tags. To order the products with these identification tags please add the suffix **E** to the end of the product number when ordering.



Recommended tool for all products: RPS13/17-6H or RPS13/17-6SH



MULTI-PORTS & EARTHING



MSC SERIES

The MSC series comprise a standard piercing connector coupled to a special multi-tap adaptor.

FEATURES

- + Cable entry joint seals at the side, parallel to main conductor. The linesman will always be working on the same plane.
- + Superior two stage cable joint caps. Improves moisture seal on minimum and maximum sized cables ensuring longevity of connection.
- + Shear-head bolts on the top of the connector. This means that the linesman is always working in the same orientation.
- + Inserted tin plated brass teeth (both sides) provide a bimetallic connection for both copper and aluminum conductors.
- + Optional high visibility yellow shear-head clips to indicate shear-head nuts have been properly operated. Can be seen from the ground.
- + The new connectors are available in red, white and blue in addition to the standard black to facilitate easier phase identification and load balancing.
- + Resealable test point on underside of connector.

Product Number	Description			
	Mains Cable Type	Mains Cable Range (mm ²)	Branch Cable Range (mm ²)	Pack Size
MSCI/3595X #	LVABC	25 to 95	4 x 6 to 35	10
MSCI/50150X #	LVABC	50 to 150	4 x 6 to 35	10
MSCC/795X #	Bare Copper	7 to 95	4 x 6 to 35	10
MSCC/50150X #	Bare Copper	50 to 150	4 x 6 to 35	10
MSCA/50150X #	Bare Aluminium	50 to 150	4 x 6 to 35	10



DENOTES COLOUR:

To order colour coding of the connectors please substitute # with the word **BLUE, WHITE or RED.**

eg. **MSCI/3595X BLUE**

To order connector with high visibility yellow shear off identification tags please add **E** to product number when ordering.

eg. **MSCI/3595X E BLUE**

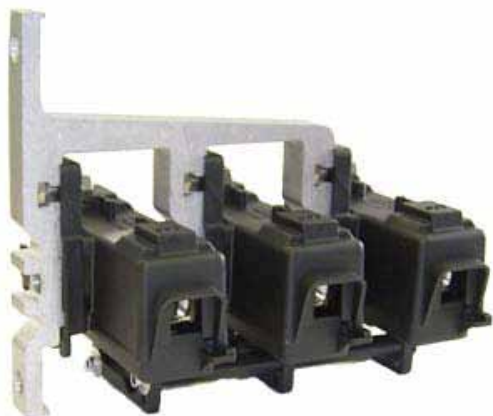


PLEASE NOTE: The products on this page can be ordered with high visibility shear-off identification tags. To order the products with these identification tags please add the suffix **E** to the end of the product number when ordering.



Recommended tool for all products: RPS13/17-6H or RPS13/17-6SH





160A, 250A & 400A FUSE SWITCHES

The full range of ADC Krone LVABC Fuse Switches

- + Fully insulated
- + On-load switching capability
- + Corrosion resistant connections
- + One or three pole units available
- + Suits standard hook stick
- + Full range of accessories available
- + Utility Approved



Product Number	Rating	Poles	Cable Range	Cable Connection Method	Notes
FSD KGH160/1T	160 A	1	1 x 16-95 sq mm Al/Cu	Tunnel type	Integral mounting bracket
FSD KGH160/3T-L	160 A	3	1 x 16-95 sq mm Al/Cu	Tunnel type	Includes mounting bracket
FSD KGH160/3P	160 A	3	1 x 25-95 sq mm Al/Cu	IPC type	Includes mounting bracket
FSD KGH250/3P	250 A	3	2 x 25-150 sq mm Al/Cu	IPC type	Includes mounting bracket
FSD KGH400/1L	400 A	1		12mm stud for lug	Max lug width 40mm
FSD KGH400/3L	400 A	3		12mm stud for lug	Max lug width 40mm, includes mounting bracket
FSD KGH400/3TP	400 A	3	2 x 25-185 sq mm (in) Al/Cu 2 x 25-150 sq mm (out) Al/Cu	Tunnel type (in) IPC type (out)	Includes mounting bracket
FSD KGH400/3PT	400 A	3	2 x 25-185 sq mm Al/Cu	Pillar terminals	
FSD KGH400/3P-LINK	400 A	3	2 x 25-150 sq mm Al/Cu	IPC	Includes mounting bracket link storage kit fitted to lower housing

Full technical specifications available on request.

MOUNTING BRACKETS



FMB KGH160

Product Number	Description
FMB KGH160	Triple pole mounting bracket for three 160A fuse switch units, includes hardware
FMB KGH400	Triple pole mounting bracket for three 400A fuse switch units, includes hardware
FCA KGH400	Cross arm mounting bracket for one 400A switch fuse unit.
FMB APR630	Mounting bracket for three APR630/1 switches

SOLID LINKS



FCL 250

Product Number	Description
FCL 400/630	Solid connecting link 400A/630A Size 2
FCL KGH-LINK BOX	Connecting-Link Storage Kit (for fitting to lower housing of switch)
FCL 250	Solid Connecting link 250A Size 1

FUSE CARTRIDGES



Product Number	Size	Rating	Suitable for FSD
FC 160NH00G	0	160A	KGH160
FC 160NH1G	1	160A	KGH250, KGH400
FC 200NH1G	1	200A	KGH250, KGH400
FC 250NH1G	1	250A	KGH250, KGH400
FC 315NH2G	2	315A	KGH400
FC 400NH2G	2	400A	KGH400



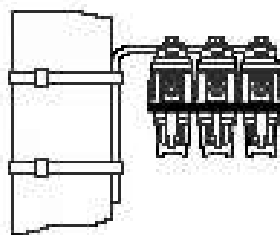
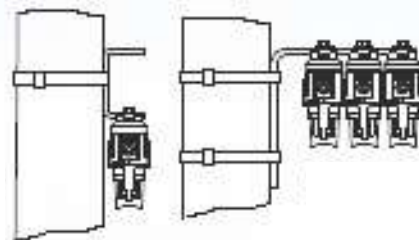
APR 160 - SINGLE PHASE SWITCH FOR NH TYPE FUSES UP TO 160A

- + The APR160 fuse switch it is used either as an operation or protection device for LV lines. It is designed to be used with NH 00 size fuses offering a maximum of 160 Amps of line protection without blades.
- + In case blades are used, the maximum switching load would be 250 A.
- + It is manufactured in reinforced fiberglass polyamide and fulfills all the necessary requirements for outdoor installation and operation.
- + In the APR 160C model the connection is made with connectors suitable for aluminum and copper conductors with a section range between 16 and 95 mm².
- + The APR 160 model can also be connected with terminals lugs and both models can be installed with single phase or three phase opening.
- + They have special sockets to obtain a compact set.
- + The switch is operated from the ground with an operating rod and also has an indicator to show if the fuse is placed. It can be sealed with security ties.
- + It also has a led to show the fusion of the fuse.

BRACKET S160



BRACKET T160



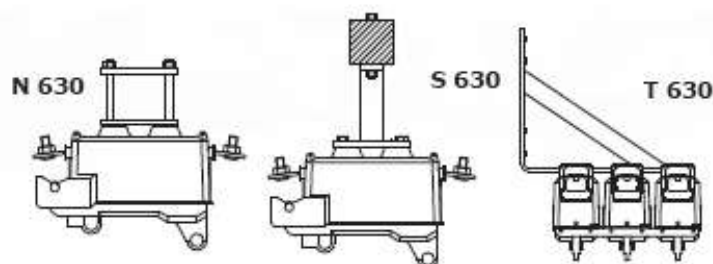
3 PHASE GANG OPERATED

Product Number	Nominal Current	Max Current with Blade	For Fuses	Protection Range	For Connection With	Packaging		
						Qty. Per Box	Kg/ Box Approx.	Box Size (mm)
APR160	160A	250A	NH 00	IP 23	Lugs	3	2, 3	305 x 205 x 130
APR160C	160A	250A	NH 00	IP 23	Connectors	3	2, 5	305 x 205 x 130
APR160IPC	160A	250A	NH 00	IP 23	IPC	3		305 x 205 x 130
APR33160CHIT	160A	250A	NH 00	IP 23	Lugs	1		



APR 630 - SINGLE PHASE SWITCH FOR NH TYPE FUSES UP TO 630A

- + The APR630 fuse switch it is used either as an operation or protection device for LV lines. It is designed to be used with NH 1-2 or 3 size fuses offering a maximum of 630 Amps of line protection without blades.
- + In case blades are used, the maximum switching load would be 800 Amps
- + It is manufactured in reinforced fiberglass polyamide and fulfills all the necessary requirements for outdoor installation and operation.
- + The closure of the cap allows the switch to be closed with or without a fuse, preventing the risk of leaving tension parts exposed. It may also be provided with a light emission diode (LED).

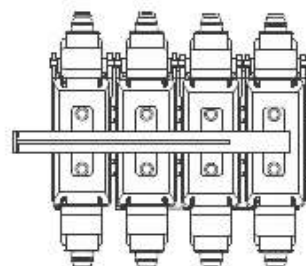
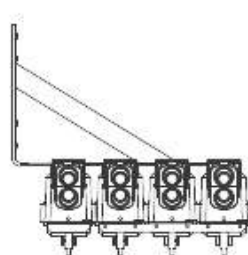


Product Number	Nominal Current	Max. Current with Blade	For Fuses	Protection Range	For Connection With	Packaging		
						Qty. Per Box	Kg/ Box Approx.	Box Size (mm)
APR630TPKAUS	600A	800A	NH 1,2,3	IP 23	Lugs	3	6, 6	370 x 300 x 200



APR630-3 - FOUR PHASE SWITCH FOR NH FUSES UP TO 630A, WITH THREE PHASE OPERATION

- + This model is suitable for switching and protecting LV overhead lines, and/or to include a protection when doing a connection to low voltage underground systems. The design of this equipment allows the opening and closing of the three phases simultaneously and independently from the neutral, which is clearly identified to prevent its disconnection in rigidly landed systems. If required, it can be easily transformed in a single phase operation switch as the standard model APR 630.
- + It can be connected with terminals lugs (APR630-3) or directly with its connectors (APR630-3C).
- + Each phase and the neutral have an indicator which show if the fuse or the blade are installed. The closure of the cap allows the switch to be closed with or without the fuse preventing the risk of leaving live parts exposed.
- + It can also be provided with a led to show the fusion of the fuses.



Box Size (mm)	Nominal Current	Max Current with Blade	For Fuses	Protection Range	For Connection With	Packaging		
						Qty. Per Box	Kg/ Box Approx.	Box Size (mm)
APR630-30	630A	800A	NH 1,2,3	IP 23	Lugs	3	13, 3	230 X 360 X 480
APR630-30C	630A	800A	NH 1,2,3	IP 23	Connectors	3	13, 3	230 X 360 X 480



DPA



DPA TAUS



DPAV

DPAV TAUS

DPA SERIES - FUSEHOLDERS

The DPA fast connectors have been designed to rapidly connect consumers to the low voltage overhead distribution system, with branching ranging between 4 and 16mm². The system is adjusted by means of a stainless steel contact spring, and its tin-plated copper flat contacts ensure a safe and lasting connection. The unit is suited for use in all kinds of services to consumers, and is fitted with an IFC connection component. Apart from working as a connecting device, it can be used as a cutout device. In this case, the IFC component (connection) is replaced by the IFC component (insulation) so that the current cutout can be effected at a point of easy access to the Electricity Distribution Company and of difficult access to the consumer. The unit includes a strapping ring to prevent or detect tampering.

Product Number	Description	Conductor Size	Quantity Per Box
DPA	Insulated horizontal	4 - 16 mm ² Cu	50
DPA TAUS	Extended insulated horizontal	4 - 16 mm ² Cu	50
DPAV	Bare vertical	4 - 16 mm ² Cu	50
DPAV TAUS	Extended Insulated vertical	4 - 16 mm ² Cu	50

IFN - NEOZED FUSE for 10, 20, 25, 35 & 63 Amperes

If DPA fast connectors are used with NEOZED fuses, or the tin-plated cooper links, you can obtain another point to cut the service or another point of protection at the beginning of the service line of each consumer, which is a hot point for electrical theft.

Ensure correct operation by using only NEOZED fuses, low-leakage IFN models, manufacture under IEC, VDE and UNE standards.

Model	Current	Quantity Per Box
IFN 10	10 A	500
IFN 20	20 A	500
IFN 25	25 A	500
IFN 35	35 A	500
IFN 63	63 A	500

HSC SERIES



HSC435

HSC435/I
HSC435/10
HSC435/1P

HSC435/T



HSCH

The HSC series of connectors have been specially designed to connect consumers mains (house side) to insulated overhead service mains (service side). Fully insulated and equipped with torque control shear-head bolts, the HSC is safe and easy to use. No stripping of insulation is required on the service mains side. The consumers mains side requires 17mm of insulation to be stripped.

HSC SERIES

APPLICATION

Service side: Insulated copper or aluminium

Mains side: Consumers mains cable (house)

FEATURES

- + Shear heads on both connections
- + Complies with relevant sections of AS4396
- + Fully bimetallic
- + Easily fits into Sicame Australia mains boxes MCB Series).
- + Totally insulated and waterproof
- + IP67 rated

TESTING SPECIFICATIONS

Relevant sections of AS4396

INSTALLATION NOTES

Use only a 13mm AF, six point hexagon socket to tighten bolts.

All other connections made on the service and consumers cable must also be waterproof to prevent moisture ingress through the cable into the connector.

Product Number	Aluminium Teeth						
	Consumers Mains Cable House side) (mm ²)	Service Side Tap Range (mm ²)	Copper Earth Tail Length (mm)	Lug Hole Size (mm)	Bolt Head A/F (mm)	Bonding Tail Size (mm ²)	Pack Size (pcs)
HSC435	4 to 35	6 to 35	N/A	N/A	13	N/A	10
HSC435E	4 to 35	6 to 35	N/A	N/A	13	N/A	10
HSC435T	10 sq mm tail	6 to 35	200	N/A	13	N/A	10
HSC435TE	10 sq mm tail	6 to 35	200	N/A	13	N/A	10
HSC435/I	4 to 35	6 to 35	800	10	13	16	10
HSC435/10	4 to 35	6 to 35	500	12	13	16	10
HSC435/1P	4 to 35	6 to 35	300	6	13	16	20
Product Number	Tin-Plated Copper Teeth						
	Consumers Mains Cable House side) (mm ²)	Service Side Tap Range (mm ²)	Copper Earth Tail Length (mm)	Lug Hole Size (mm)	Bolt Head A/F (mm)	Bonding Tail Size (mm ²)	Pack Size (pcs)
HSC435A	4 to 35	6 to 35	N/A	N/A	13	N/A	10
HSC435AE	4 to 35	6 to 35	N/A	N/A	13	N/A	10
HSC435B	4 to 35	6 to 35	N/A	N/A	13	N/A	10
HSC435BE	4 to 35	6 to 35	N/A	N/A	13	N/A	10
HSC435CE	4 to 35	6 to 35	N/A	N/A	13	N/A	10
HSC435TA	10 sq mm tail	6 to 35	200	N/A	13	N/A	10
HSC435TAE	10 sq mm tail	6 to 35	200	N/A	13	N/A	10

Product Number	Discription
HSCH	Gripping handle for HSC435, HSC435E, HSC435/T, HSC435TE, HSC435A, HSC435AE, HSC435B, HSC435BE, HSC435CE, HSC435TA & HSC435TAE

PLEASE NOTE: The products on this page can be ordered with high visibility shear-off identification tags. To order the products with these identification tages please add the suffix **E** to the end of the product number when ordering.



Recommended tool for all products: RPS13/17-6H or RPS13/17-6SH



HSC DOUBLE BOLT SERIES



HSC435DB



The HSC series of connectors have been specially designed to connect consumers mains (house side) to insulated overhead service mains (service side). Fully insulated and equipped with torque control shear-head bolts, the HSC is safe and easy to use. No stripping of insulation is required on the service mains side. The consumers mains side requires 47mm of insulation to be stripped.

HSC DOUBLE BOLT SERIES

APPLICATION

Service mains side: Insulated copper or aluminium

Mains domestic side: Consumers mains cable, accepts copper

Used as connection point on domestic dwellings, range taking 6-35 mm².

FEATURES

- + Fully bimetallic
- + Totally insulated and waterproof
- + Transparent window ensures cable is correctly inserted
- + Shear-head technology on both connections
- + IP67 rated

INSTALLATION NOTES

Use only a 13mm AF, six point hexagon socket to tighten bolts.

All other connections made on the service and consumers cable must also be waterproof to prevent moisture ingress through the cable into the connector.

Product Number	Consumers Mains Cable House side) (mm ²)	Service Side Tap Range (mm ²)	Bolt Head A/F (mm)	Pack Size (pcs)
HSC435DB	4 to 35	6 to 35	13	10
HSC435DBE	4 to 35	6 to 35	13	10

PLEASE NOTE: The products on this page can be ordered with high visibility shear-off identification tags. To order the products with these identification tags please add the suffix **E** to the end of the product number when ordering.



Recommended tool for all products: RPS13/17-6H or RPS13/17-6SH



CAW & CCW SERIES

The CCW and CAW series of connectors have been specially designed to provide a waterproof connection between insulated overhead services to a variety of bare overhead mains. Both single and double tap models are available.



CCW35E



CCW235

CCW SERIES

- Mains: Bare copper
Service: Insulated copper or aluminium
+ Piercing connector on service tap
+ Complies with relevant sections of AS4396
+ Disconnection of service by easy removal of the connector from the mains
+ Two tap (CCW235) model available

Product Number	Mains Range			Service Taps		Pack Size (pcs)
	Stranding	Area (mm ²)	OD (mm)	Range (mm ²)	Quantity	
Connectors for Bare Copper Mains						
CCW35	7/1.00 to 19/3.00 Cu	5.5 to 135	3 to 15	6 to 35	1	12
CCW235	7/1.00 to 19/3.00 Cu	5.5 to 135	3 to 15	6 to 35	2	12

INSTALLATION NOTES

Use only a 13mm AF, six point hexagon socket to tighten bolts.

All other connections made on the service and consumers cable must also be waterproof to prevent moisture ingress through the cable into the connector.



CAW35E



CAW235

CAW SERIES

- Mains: Bare aluminium
Service: Insulated copper or aluminium
+ Piercing connector on service tap
+ Complies with relevant sections of AS4396
+ Disconnection of service by easy removal of the connector from the mains
+ Two tap (CAW235) model available
+ Simple M8 socket operation

Product Number	Mains Range			Service Taps		Pack Size (pcs)
	Stranding	Area (mm²)	OD (mm)	Range (mm²)	Quantity	
Connectors for Bare Aluminium Mains						
CAW35	7/1.75 to 19/3.75 Al	16 to 210	5 to 19	6 to 35	1	12
CAW235	7/1.75 to 19/3.75 Al	16 to 210	5 to 19	6 to 35	2	12

INSTALLATION NOTES

Use only a 13mm AF, six point hexagon socket to tighten bolts.

All other connections made on the service and consumers cable must also be waterproof to prevent moisture ingress through the cable into the connector.

PLEASE NOTE: The products on this page can be ordered with high visibility shear-off identification tags. To order the products with these identification tags please add the suffix **E** to the end of the product number when ordering.



Recommended tool for all products: RPS13/17-6H or RPS13/17-6SH



CAW & CCW DOUBLE BOLT SERIES

The CCW and CAW series of connectors have been specially designed to provide a waterproof connection between insulated overhead services to a variety of bare overhead mains. Both single and double tap models are available.



CCW35DBE

CCW35DB

Product Number	Mains Range			Service Taps		Pack Size (pcs)
	Stranding	Area (mm²)	OD (mm)	Range (mm²)	Quantity	
Connectors for Bare Aluminium Mains						
CAW35DB	7/1.75 to 19/3.75 Al	16 to 210	5 to 19	6 to 35	2	6
CAW35DBE	7/1.75 to 19/3.75 Al	16 to 210	5 to 19	6 to 35	2	6

CCW SERIES

APPLICATION

Mains: Bare aluminium

Service: Insulated copper or aluminium

FEATURES

- + Piercing connector on service tap
- + Disconnection of service by easy removal of the connector from the mains
- + Service connection fully sealed and waterproof
- + Bimetallic service connection, tin plated brass teeth
- + Transparent window ensures cable is correctly inserted

INSTALLATION NOTES

Use only a 13mm AF, six point hexagon socket to tighten bolts.

All other connections made on the service and consumers cable must also be waterproof to prevent moisture ingress through the cable into the connector.



CAW35DBE

CAW35DB

Product Number	Mains Range			Service Taps		Pack Size (pcs)
	Stranding	Area (mm ²)	OD (mm)	Range (mm ²)	Quantity	
Connectors for Bare Copper Mains						
CCW35DB	7/1.00 to 19/3.00 Cu	5.5 to 135	3 to 15	6 to 35	2	6
CCW35DBE	7/1.00 to 19/3.00 Cu	5.5 to 135	3 to 15	6 to 35	2	6

CAW SERIES

APPLICATION

Mains: Bare copper

Service: Insulated copper or aluminium

FEATURES

- + Piercing connector on service tap
- + Disconnection of service by easy removal of the connector from the mains
- + Service connection fully sealed and waterproof
- + Bimetallic service connection, tin plated brass teeth
- + Transparent window ensures cable is correctly inserted

INSTALLATION NOTES

Use only a 13mm AF, six point hexagon socket to tighten bolts.

All other connections made on the service and consumers cable must also be waterproof to prevent moisture ingress through the cable into the connector.

PLEASE NOTE: The products on this page can be ordered with high visibility shear-off identification tags. To order the products with these identification tags please add the suffix **E** to the end of the product number when ordering.



Recommended tool for all products: RPS13/17-6H or RPS13/17-6SH



NEUTRAL BONDING ALTERNATIVES



TTD101NBKX/12

Product Number	Description				
	Service Side Tap Range (mm ²)	Copper Earth Tail Length (mm)	Lug Hole Size (mm)	Bolt Head Stainless Steel A/F (mm)	Pack Size (pcs)
TTD101NBKX	6 to 54	800	10	13	10
TTD101NBKX/12	6 to 54	500	12	13	10

CABLE END SEALS

Cable end seals. Easy push on cap providing complete waterproofing of cable ends.

Only two sizes required to cover entire range of LVABC cables.



Product Number	Cable Size (mm ²)	Diameter of cable (mm)	Length L (mm)	Pack Size
CES1	16 to 70	7.5 to 13.5	45	50
CES2	95 to 150	16.5 to 21.0	45	50

PLEASE NOTE: The products on this page can be ordered with high visibility shear-off identification tags. To order the products with these identification tags please add the suffix **E** to the end of the product number when ordering.



Recommended tool for all products: RPS13/17-6H or RPS13/17-6SH



MAINS CONNECTION BOXES



MCB1/2H

MCB3/4H

Single and three phase environmental base and cover for the protection of consumer mains suitable for 6 to 35mm² cable. Each unit contains the HSC series (House Services Connector) providing a fully sealed bimetallic connection of copper consumer mains to Al or Cu services.

MCB SERIES - MAINS CONNECTION BOX

- + Fully insulated connection system
- + Plug in HSC's providing bi-metal connection of service cables and consumers mains
- + Base suitable for rear entry of consumers mains
- + Eliminates UV degradation of PVC consumers mains
- + Cover allows for easy exit of bonding tail HSC435/1 series
- + Heavy duty polyamide UV stabilised construction
- + Mains box is IP66 rated
- + Connectors are IP67 rated

Please Note: Use only a 13mm AF, six point hexagon socket to tighten the HSC bolts.

Product Number	Description	Number of HSC435 connectors included	Pack Size (pcs)
MCB1/2H	Single phase MCB supplied with connectors	2	10
MCB3/4H	Three phase MCB supplied with connectors	4	6

PLEASE NOTE: The products on this page can be ordered with high visibility shear-off identification tags. To order the products with these identification tags please add the suffix **E** to the end of the product number when ordering.



Recommended tool for all products: RPS13/17-6H or RPS13/17-6SH
A flat blade screw is required to remove the MCB cover.



PFV SERIES



PFV100



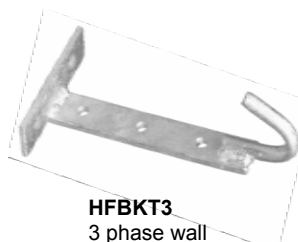
PFVAB1



PFV100KIT

MOUNTING BRACKET OPTIONS


PFBKT1
1 phase pole
mount bracket

PFBKT3
3 phase pole
mount bracket

HFBKT3
3 phase wall
mount bracket

HFBKT1
1 phase wall
mount bracket

Pole or house mounted fuse holders and accessories. 100 amp single phase, "pig-tail stick" operated, service fuse for house or pole mounting.

PFV SERIES SERVICE FUSE HOLDER

APPLICATION

Insulated XLPE aluminium or copper cables,
Suitable for mounting on pole or house using
appropriate bracket.
Primary House Service Fuse

FEATURES

- + Range of brackets to suit various applications including replacements
- + Insulation piercing connections on line and load sides
- + Insulated top mounting M8 shear head bolts
- + Underside entry cable connection ports creating drip loops on all installations
- + Accepts up to 100 amp BS style cartridge (58 x 22mm)
- + U.V. stabilised polymeric body with anti-flame retardant
- + Can be ganged to three phases using PFBKT3 or HFBKT3
- + U.V. stabilised bird guards over cable seals
- + Completely waterproof bi-metallic connections.
- + Stainless steel mounting bolt
- + IP44 rated

TESTING SPECIFICATION

Relevant sections of AS/NZS 60269
Salt fog tracking tests
Additional temperature rise tests on service cables
not specified in the standard

Product Number	Description	Cable Range (mm ²)	Pack Size
PFV100	Fuse Disconnecter 100 amp BS style (58 x 22)	6 to 35	20
PFV100KIT	Fuse - 100 amp BS style includes PFVAB1 adaptor bracket installed	6 to 35	12
PFV100 695	Fuse Disconnecter 100 amp BS style (58 x 22)	6 to 95	
ACCESSORIES			
Product Number	Description	Pack Size	
PFBKT1	Pole bracket single phase	20	
PFBKT3	Pole bracket three phase	15	
HFBKT1	House bracket single phase	20	
HFBKT3	House bracket three phase	15	
PFVAB1	Adaptor bracket to fit PFV100 to swan neck pin	40	
FUSE BS100	100 amp BS Cartridge (58x22mm)	1	

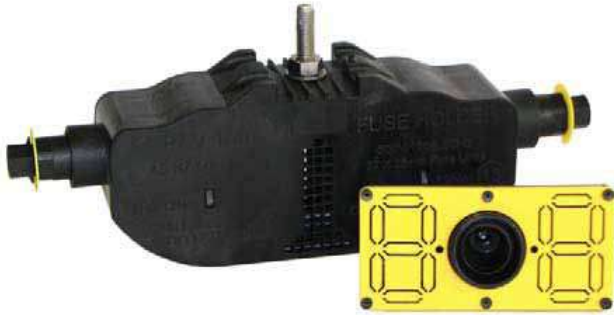
PLEASE NOTE: The products on this page can be ordered with high visibility shear-off identification tags. To order the products with these identification tags please add the suffix **E** to the end of the product number when ordering.



Recommended tool for all products: RPS13/17-6H or RPS13/17-6SH



PFV SERIES WITH ID PLATES



PFV100 E IDP



PFIDP



PF NPA



SFP450
Service fuse puller,
450mm long

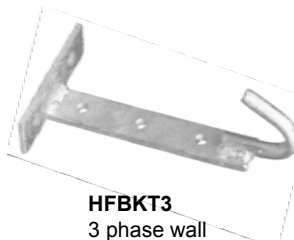
MOUNTING BRACKET OPTIONS



PFBKT1
1 phase pole
mount bracket



PFBKT3
3 phase pole
mount bracket



HFBKT3
3 phase wall
mount bracket



HFBKT1
1 phase wall
mount bracket

PFV SERIES SERVICE FUSE HOLDER WITH HOUSE NUMBER ID PLATE

Refer previous page (PFV Series) for application, features, specification and installation notes.

House number identification plates feature user removable segments.



House numbers are bright yellow and easily readable from ground level. ID plate clearly identifies the fuse unit applicable to each house connected at the pole.



Product Number	Description	Cable Range (mm ²)	Pack Size
PFV100 695 E IDP	Fuse Disconnecter 100 amp BS style (58 x 22), with house number ID plate and shear indicator clip	6 to 95	20
ACCESSORIES			
Product Number	Description	Pack Size	
PF NPA	Retro-fitting house number ID plate, suitable for fuse holders PFV100 and PFV100 695		
PFIDP	Fuse carrier (100 amp max) with house number ID plate to suit PFV100 and PFV100 695		

PLEASE NOTE: The products on this page can be ordered with high visibility shear-off identification tags. To order the products with these identification tags please add the suffix **E** to the end of the product number when ordering.



Recommended tool for all products: RPS13/17-6H or RPS13/17-6SH



WATER BLOCKING CONNECTOR



A transitional joint for very small conductors connecting to equipment only designed for large conductors. Ideally suited for street light cables where particularly small conductors can be connected to larger main cables.

A connector to stop moisture and water travelling from one electrical cable system to another.

WATER BLOCKING CONNECTOR

APPLICATION

A connector to stop moisture and water travelling from one electrical cable system to another or as a transitional joint for very small conductors connecting to equipment only designed for large conductors.

FEATURES

- + Provides a fully sealed, waterproof connection
- + Torque controlling shear heads on all bolts
- + Tightening bolts do not come into contact with live components
- + Has a tail that is fully sealed within the body which can be inserted into the equipment
- + Comes complete with a test point

TESTING SPECIFICATION

AS/NZS 4396:1999

Insulation Piercing for 0.6/1kV Aerial Bundled Cables

Product Number	Cable Range (mm ²)
WBC125	1.5 - 25
WBC125E	1.5 - 25

PLEASE NOTE:

E = Comes with high visibility yellow shear-head identification tags.

PLEASE NOTE: The products on this page can be ordered with high visibility shear-off identification tags. To order the products with these identification tags please add the suffix **E** to the end of the product number when ordering.



Recommended tool for all products: RPS13/17-6H or RPS13/17-6SH



MJPB & MJPT SERIES



MJPB



MJPT

Pre-insulated compression sleeves for joining LVABC services and mains.

MJPB SERIES

- + Non-tension 4 to 35mm² range
- + Suitable for copper or aluminium

Product Number	Service Cable Size (mm ²)		Hex Die A/F (mm)	Pack Size
MJPB4	4	4	14	10
MJPB6-4	6	4	14	10
MJPB6	6	6	14	10
MJPB10-6	10	6	14	10
MJPB10	10	10	14	10
MJPB16-6	16	6	14	10
MJPB16-10	16	10	14	10
MJPB16	25	16	14	10
MJPB25-6	25	6	14	10
MJPB25-10	25	10	14	10
MJPB25-16	25	16	14	10
MJPB25	25	25	14	10
MJPB35-6	35	6	14	10
MJPB35-10	35	10	14	10
MJPB35-16	35	16	14	10
MJPB35-25	35	25	14	10
MJPB35	35	35	14	10

Crimp width: 9 mm

Standard pack size: 10 pcs

MJPT SERIES

- + Limited and full tension 25 to 150mm² range
- + Suitable for copper or aluminium

Product Number	Service Cable Size (mm ²)		Hex Die A/F (mm)	Pack Size
MJPT25	25	25	17.3	10
MJPT35-25	35	25	17.3	10
MJPT35	35	35	17.3	10
MJPT50-25	50	25	17.3	10
MJPT50-35	50	35	17.3	10
MJPT50	50	50	17.3	10
MJPT70-35	70	35	17.3	10
MJPT70-50	70	50	17.3	10
MJPT70	70	70	17.3	10
**MJPT95	95	95	17.3	10
MJPT95-21	95	95	21.5	10
MJPT120	120	120	21.5	10
**MJPT150	150	150	21.5	10

** Limited tension fittings
When tested to AS3706, test load achieved is:- MJPT95: 7kN, MJPT95-21: 16.8kN
All crimps 9mm in width

Standard pack size: 10 pcs

Recommended tool for MJPT connectors:

Use any mechanical or hydraulic action crimp tool capable of accepting 9mm wide hexagonal crimp dies, with an across flats (AF) as specified in chart above. Minimum tonnage at die face recommended at 5 tonne.

Recommended tool for all products: MP-10 SIMPI



Pre-insulated compression sleeves with pre-crimped, PVC insulated copper tails



Product Number	Service Cable Size Copper or Aluminium (mm ²)	Pre-crimped PVC insulated copper tail			Hex Die AF (mm)	Pack Size
		Size (mm ²)	Insulation Ribs	Length (mm)		
MJPB25-10+CABLE	25	10	None	225	14	20
MJPB25-10+(N)CABLE	25	10	1 rib for neutral identification	225	14	20
MJPB25-16+CABLE	25	16	None	225	14	20
MJPB25-16+(N)CABLE	25	16	1 rib for neutral identification	225	14	20

Crimp width: 9mm for all products

MJPB SERIES PRE-CRIMPED

- + Non-tension 4 to 35mm² range
- + Suitable for copper or aluminium

Recommended tool for all products: MP-10 SIMPI



MP-10 SIMPI

APPLICATION TOOLING

Product Number: MP-10 SIMPI

- + One-hand operation
- + Specifically designed for MJPB series and other pre-insulated products
- + Captive dies
- + Non-hydraulic
- + Hexagonal crimp AF: 14mm
- + Hexagonal crimp width: 9mm

PRE-CRIMPED SLEEVE & TOOLS



MEPCNA

MEPCNA SERIES

- + Pre-crimped with bare aluminium tail
- + End cap on tail provided to prevent fraying
- + Used for terminating LVABC into switchgear
- + Used for connecting LVABC to open wire bare conductor

Product Number	Cable Size (mm ²)	Aluminium Tail Size (mm ²)	Die A/F (mm)	Crimp Width (mm)	Pack Size
MEPCNA16	16	35	14	9	
MEPCNA16-17	16	35	17.3	9	
MEPCNA25	25	35	14	9	
MEPCNA25-17	25	35	17.3	9	
MEPCNA35	35	55	17.3	9	
MEPCNA50	50	55	17.3	9	
MEPCNA70	70	55	17.3	9	
MEPCNA95*	95	75	17.3	9	100
MEPCNA150*	150	75	21.5	9	100

* 75 deg C current rating: 250A



MEPCNU

MEPCNU SERIES

- + Pre-crimped with bare copper tail
- + End cap on tail provided to prevent fraying
- + Used for terminating LVABC into switchgear
- + Used for connecting LVABC to open wire bare conductor

Product Number	Cable Size (mm ²)	Copper Tail Size (mm ²)	Die A/F (mm)	Crimp Width (mm)	Pack Size
MEPCNU16	16	35	14	9	
MEPCNU16-17	16	35	17.3	9	
MEPCNU25	25	35	14	9	
MEPCNU25-17	25	35	17.3	9	
MEPCNU35	35	55	17.3	9	
MEPCNU50	50	55	17.3	9	100
MEPCNU70	70	55	17.3	9	
MEPCNU95*	95	75	17.3	9	100
MEPCNU150**	150	75	21.5	9	50

* 75 deg C current rating: 250A
** 75 deg C current rating: 370A

Recommended tool for MEPCNU16, MEPCNA16, MEPCNU25, MEPCNA25: [MP-10 SIMPL](#).
All other MEPCN series products: Any compression tool with min 5t output fitted with hexagonal compression dies as specified above.



CPTAU & CPTA SERIES

A complete range of pre-insulated bi-metal and aluminium lugs for the termination of LVABC.



Product Number	Cable Size (mm ²)	Lug Dimensions (mm)			Hex Die A/F (mm)	Die Width (mm)	Pack Size (pcs)
		Overall Length (L) (mm)	Palm Hole Size	Outside Palm Diameter (mm)			
CPTAU16	16	87	M10	20	14	9	10
CPTAU25	25	87	M10	20	14	9	10
CPTAU25-17	25	92	M10	25	17	9	10
CPTAU25-12.5DIA	25	87	M12	20	14	9	10
CPTAU35	35	92	M12	25	17.3	9	10
CPTAU50	50	92	M12	25	17.3	9	10
CPTAU70-21	50	115	M12	25	21.5	9	10
CPTAU95	95	92	M12	25	17.3	9	10
CPTAU95-21	95	115	M12	30	21.5	9	10
CPTAU150	150	115	M12	30	21.5	9	10

CPTAU SERIES BI-METALS

- + Suits aluminium LVABC and other insulated compacted aluminium cables
- + Round copper palm
- + Suitable for connecting aluminium cables to switchgear, bus bars etc.



CPTA SERIES ALUMINIUM

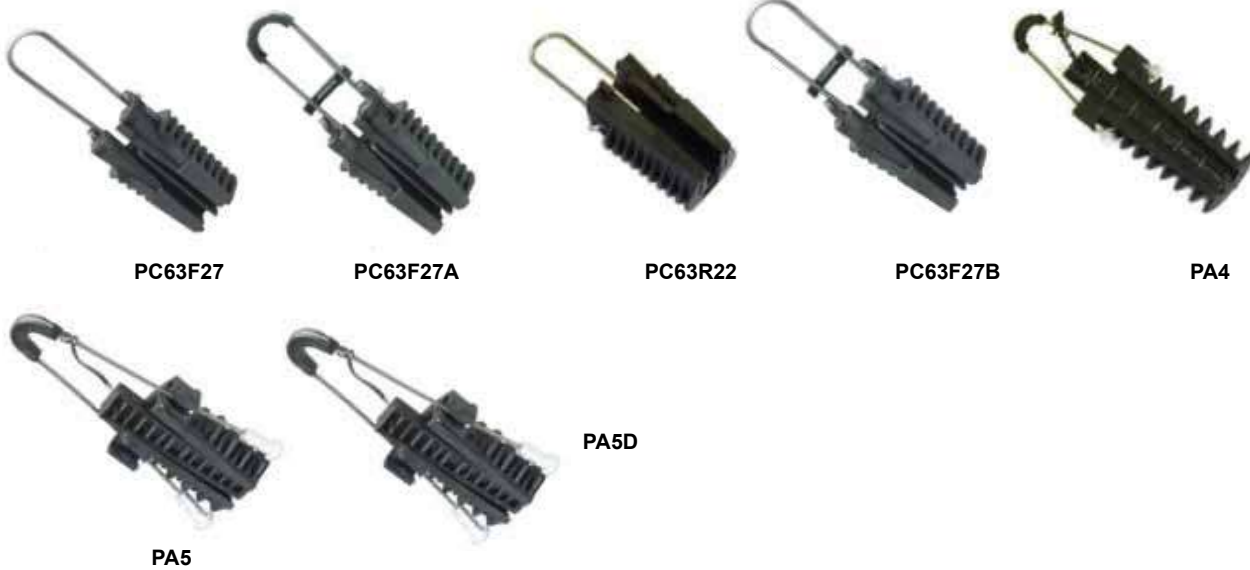
- + Suits aluminium LVABC and other insulated compacted aluminium cables
- + Square aluminium palm
- + Suitable for connecting aluminium cables to switchgear, bus bars etc.

Product Number	Cable Size (mm ²)	Lug Dimensions (mm)			Hex Die A/F (mm)	Die Width (mm)	Pack Size (pcs)
		Overall Length (L) (mm)	Palm Hole Size	Palm (W x D) (mm)			
CPTA25	25	110	M12	32 x 33	14	9	10
CPTA35	35	110	M16	32 x 33	17.3	9	10
CPTA50	50	110	M16	32 x 33	17.3	9	10
CPTA95	95	110	M16	32 x 33	17.3	9	10
CPTA150	150	130	M16	37 x 37	21.5	9	10

Recommended tool for up to 25 mm²: **MP-10 SIMPI**, larger sizes: any compression tool with min 5t output fitted with hexagonal compression dies as specified above.



PA, PC & BCST SERIES



PA & PC SERIES

- Wedge type strain clamps
- + PA series for higher tensions.
 - + PC series for service tensions.
 - + PC series suitable for 2, 3v and 4 core twisted cables.
 - + Stainless steel bails on PA and PC models.
 - + Fibreglass reinforced UV stabilised nylon.
 - + Stainless steel bails
 - + Fibreglass reinforced UV stabilised nylon.

Product Number	Cable Type	Cable Diameter (mm)	No. and Size of Cores (mm ²)	Min. Failing Load (kN)	Pack Size
PC63R22	Neutral Screened	14 to 22		2.5	10
PC63F27	Twisted or Flat		2 x 6 to 4 x 35	2.5	100
PC63F27A	Twisted or Flat		2 x 6 to 4 x 35	2.5	100
PC63F27B	Twisted or Flat		2 x 6 to 4 x 35	2.5	100
PA4	Twisted or Flat		2 x 6 to 2 x 25	6	10
PA5	Twisted or Flat		2 x 25 to 2 x 50	14	10
PA5D	Twisted or Flat		2 x 16 to 4 x 25	12	10



BCST SERIES

Bolted Type Service Strain Clamps

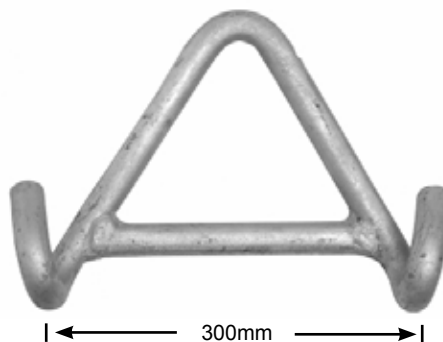
- + Nylon glass reinforced clamping blocks
- + Blocks spring loaded for ease of cable mounting
- + Galvanised steel or plastic strap
- + M10 stainless steel fastening hardware
- + Can also be used as a suspension fitting by rotating the clamping blocks 90 degrees

Product Number	Cable Size (mm ²)	Strap	Hook Style	Pack Size
BCST-2025-3G	2 x 10 to 35	Galvanised	Open	50
BCST-4035-3G	4 x 10 to 35	Galvanised	Open	30
BCST-2025-3P	2 x 10 to 35	Nylon	Open	50
BCST-2025-3PA	2 x 10 to 35	Nylon	Closed	50
BCST-4035-3P	4 x 10 to 35	Nylon	Open	30
BCST-4035-3PA	4 x 10 to 35	Nylon	Closed	30

Suspension clamps and termination clamps for ABC mains and sub-mains.



SC495



PSY/H

SC SERIES SUSPENSION CLAMPS

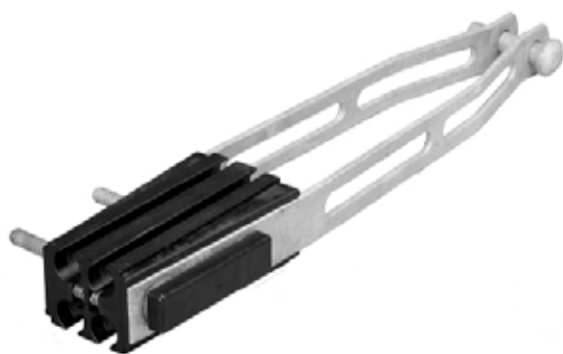
APPLICATION

Suspension of LVABC from 25mm² to 150mm²

FEATURES

- + Suitable for angles up to 30°
- + 30° to 60° use PSY/H bracket
- + Hinged aluminium alloy with body with stainless steel fasteners
- + Reinforced hanging eye to stop wear through vibration
- + Large angle yokes available

Product Number	Dia. of circumscribing circle over laid-up cable cores (mm)	Cable Size (mm ²)			
		2 Core	3 Core	4 Core	Pack Size
SC435	22 to 27	50	35, 50	25, 35	20
SC450	27 to 30			50	20
SC470	31 to 33	95		70	20
SC495	37 to 40			95	20
SC4150	43 to 47			150	20



PA122A



PA2535

PA SERIES TERMINATION CLAMPS

APPLICATION

Termination of LVABC 2 x 25mm² to 4 x 150mm²

FEATURES

- + Bolted full tension clamp
- + Stainless steel fasteners available as an option
- + Meets requirements of AS3560
- + Removable clevis pin

APPLICATION NOTE

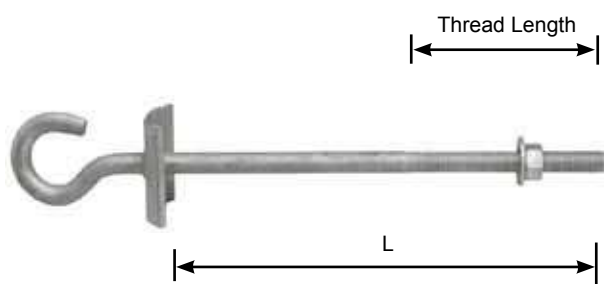
Use fillers if only 2 cores are utilised.

Product Number	Cable Size (mm ²)	Maximum Failing Load (kN)	Rated Everyday Tension (kN)	Pack Size
PA2535	2 x 25 and 4 x 25 to 35			25
PA10/I	2 x 25 to 50 and 4 x 25 to 50	37	6	6
PA10/IS*	2 x 25 to 50 and 4 x 25 to 50	37	6	6
PA11/I	2 x 50 to 95 and 4 x 50 to 95	43	6	6
PA11/IS*	2 x 50 to 95 and 4 x 50 to 95	43	6	6
PA122A	4 x 95 to 4 x 150	72		15

*Stainless steel fasteners

OEB, JH & QH SERIES

OPEN EYE BOLTS TO AS3766



Length (L) mm	Product Number		
	16 mm Dia. (D)	20 mm Dia. (D)	Pack Size
250	OEB16X250 *	OEB20X250 *	15
325	OEB16X325		15
350	OEB16X350 *	OEB20X350 *	15

* Preferred item in AS3766



J HOOK

Size: M12 to AS3766
Packed in bags of 50

Product Number	Pack Size
J HOOK	50



J HOOK WITH EARTH TAG

J Hook with earth tag
Size: M12 to AS3766
Packed in bags of 50

Product Number	Pack Size
J HOOK-T	50



Q HOOK

Size: M12 to AS 3766
Packed in bags of 50

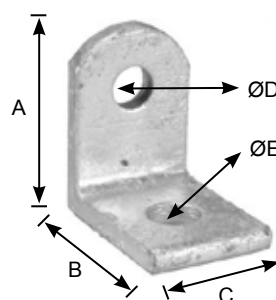
Product Number	Pack Size
Q HOOK	50



LVABC HOOK

Galvanised steel hook bracket.
Max working load: 12kN
Hook diameter: 16mm
To AS3766

Product Number	Max Working Load	Hook Diameter (mm)
HB1	12kN	16



ANGLE BRACKET

To Energy Australia specifications

Product Number	Dimensions (mm)				
	A	B	C	ØD	ØE
ANG BKT	76.5	74.5	50	17.5	21.5

WEAK LINKS & EYE NUTS



M12 EYE NUT

M12 eye nut to Energy Australia specifications

Product Number

OEN M12



M12 EXTENDED EYE NUT

M12 extended eye nut to Energy Australia specifications

Product Number

OEN M12 E



WEAK LINK

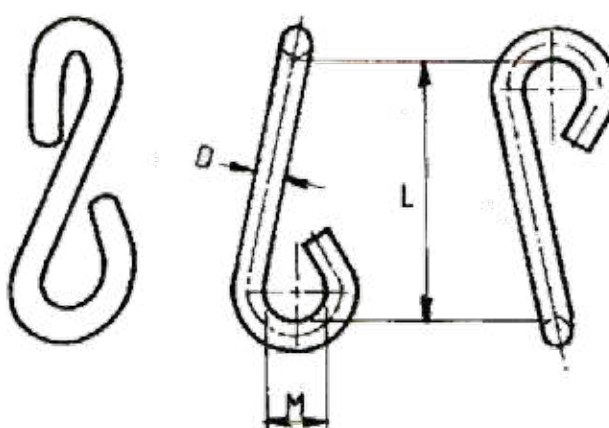
1.5kN weak link to Energy Australia specifications
Packed in bags of 100

Product Number

LFG150



LFG800T



ABC Mechanical Weak Link

Can be installed between suspension clamp and pole support fitting. Can also be installed between service cable strain clamps or mains cable strain clamps.
Mild steel galvanized to AS1650.

Product Number Colour coded	Nominal Falling Load (kN)	Dimensions		
		D (mm)	L (mm)	M (mm)
LFG400T	4	10	65	20
LFG600T	6	10	65	20
LFG800T	8	10	65	20