

"I've been paint blasting for many years and I can honestly say that working with the SA LUMIN Blast Light has made my job easier than ever before."

Experienced North Sea Blaster, Specialist Contract Company

HEAT
LIGHT
AIR
POWER



- 48 **LED Torch**
- 52 **LED Tasklight**
- 56 **LED Tasklight Kit**
- 60 **LED Worklight 100**
- 64 **LED Worklight 200**
- 68 **LED Emergency Worklight**
- 72 **LED Standard Floodlight**
- 76 **LED Compact Floodlight**
- 80 **UV LED Floodlight**
- 84 **Blast Light**

LIGHT

Light – the right kind of bright, pure, dependable light – is pretty much essential for almost any kind of work. In a potentially dangerous environment, a safe and reliable light source can be a matter of life and death.

At SA Equip, we’re experts in shining light into the most challenging places. From a hand-held torch weighing 145g to entire semi-permanent emergency lighting systems with fixing and protection devices, our comprehensive range has everything you’ll ever need. On the rig, in a tank or a sewer, working alone or with a team, blasting in a dust-laden environment or outside in extreme weather conditions, our lighting range is second to none.

Safety is paramount, but it’s about efficiency, too. If you can see properly, you can work better – so product benefits like extended battery life, easy fixing and smooth glare-free light translate into more productive shifts and ultimately, more profit.



LED TORCH

EX150



HANDY, POWERFUL, EXTREMELY TOUGH

Weighing just 145g, the SA LUMIN EX LED Torch packs the power of a much larger handlamp into a compact, robust package. It throws out an impressive 135 lumens where you need it, and an Intelligent Light Sensor adjusts the beam, extending battery life to save you time and money. **Running up to 30 hours on one set of four standard AAA batteries**, it also features a glo cap so it's easy to find in the dark.





LED TORCH

EX150

BENEFITS

- ATEX Certified for Zones 0, 1 and 2 (gas), 20, 21 and 22 (dust)
- Penetrating light beam
- Waterproof and dustproof
- Ergonomic design
- Optimum light output to size ratio
- Intelligent Light Sensor
- Up to 30 hours battery life
- Uses standard AAA batteries
- Glo cap

You may also need...
Lighting Kits – see page 56



SPECIFICATIONS

CERTIFICATION

- ⚡ II 1G Ex ia IIC T4 Ga
- ⚡ II 1D Ex ia IIIC T85°C Da

INGRESS PROTECTION

IP67

OPERATING TEMPERATURE

-20°C to +40°C

MATERIALS

Impact resistant thermoplastic resin

POWER SAVING MODE

Light sensor adjusts light power to suit the ambient light

BATTERIES

4 x AAA/R03 6V

BATTERY DURATION

- High Power – 4 hours
- Medium Power – 8 hours
- Low Power – 30 hours

LIGHT OUTPUT

135 lumens

LIGHT SOURCE

High Power LED

DIMENSIONS

150mm x 38mm x 44mm

WEIGHT

145g

ACCESSORIES INCLUDED

Wrist Strap

CORE PRODUCT INFORMATION

SA LUMIN EX LED Torch c/w light sensor, wrist strap, and 4 x AAA/R03 6V batteries

Order Code: EX150



See pages 142 – 145 for the complete Core Product Directory.



LIGHT



LED TASKLIGHT

SATL100



CLEAR, EVEN LIGHT PRECISELY WHERE YOU NEED IT

With a bank of 30 high-power LEDs, the SA LUMIN EX LED Tasklight gives you clear, even light output so you can see and work efficiently, practically anywhere. It's ideal for quick inspections, emergency response work, rope access work and tasks in remote or inaccessible areas. As it's rechargeable there are no trailing cables to trip over, and a **fast recharge time of 1-3 hours gives up to 6 hours use**. A versatile ergonomic design means you can hang it, stand it up, lie it down or hold it exactly where you need it.

LIGHT



LED TASKLIGHT

SATL100

BENEFITS

- ATEX and IECEx Certified for Zones 0, 1 and 2 (gas), 20, 21 and 22 (dust)
- High Power LED Light Output
- Rechargeable – no trailing cables
- Up to 6 hours use per charge
- Waterproof and dustproof (IP66)
- Low charge warning
- Lightweight & highly ergonomic
- Tough and durable
- Retractable hook
- Fast charge time – 3 hours
- Available with 5-way charging rack

You may also need...
Tasklight Kits – see page 56
LED Floodlights – see pages 72, 76 & 80



SPECIFICATIONS

- CERTIFICATION**
II 1G Ex ia op is IIC T4 Ga
II 1D Ex ia IIC T100°C Da
I M1 Ex ia I Ma
- CHARGING TIME**
Full charge – 3 hours
80% charge – 1 hour
- OPERATING TEMPERATURE**
-20°C to +60°C
- INGRESS PROTECTION**
IP66
- BATTERY**
Lithium-Ion
- LIGHT OUTPUT**
600 lux at 1m with 30 high power LEDs
- WEIGHT**
615g (Tasklight only)
425g (Single Charger only)
7.7kg (Charging Rack only)
- DIMENSIONS**
289mm x 76mm x 46.5mm (Tasklight only)
140mm x 134.5mm x 104mm (Single Charger)
850mm x 270mm x 180mm (Charging Rack)
- ELECTRONICS**
Low charge warning
- CHARGER SUPPLY VOLTAGE**
200-250VAC (Single Charger & Charging Rack)
12-14VDC (Single Charger only)
- CHARGING TEMPERATURE**
0°C to +40°C

CORE PRODUCT INFORMATION

- SA LUMIN EX LED Rechargeable Tasklight offering 6 hours continuous use c/w charger, mains supply lead, & car socket lead
Order Code: SATL100
- SA LUMIN EX LED Rechargeable Tasklight Set c/w 5 Tasklights, 5-Way Charging Rack, & Mains Supply Lead
Order Code: SATL100/CR5
- SA LUMIN Tasklight Holster enabling hands-free operation of the Tasklight c/w adjustable strap
Order Code: SATL/HR
- SA LUMIN Tasklight Magnetic Bracket c/w anti-static strap and stainless steel spring-loaded buckle
Order Code: SATL/MB
- SA LUMIN Tasklight Stabilising Base Unit
Order Code: SATL/BU

See pages 142 – 145 for the complete Core Product Directory.



LIGHT

LED TASKLIGHT KIT

SATL100/KIT1 / SATL100/KIT2



EVERYTHING YOU NEED TO PUT YOUR TASKLIGHT TO WORK

The SA LUMIN EX LED Tasklight is now available with a comprehensive kit of accessories, and **ready to use in any eventuality**. Along with the Tasklight itself, the kit includes a holster, magnetic bracket, base unit, and a handy additional EX150 Torch together with a charger and charging leads.



LED TASKLIGHT KIT

SATL100/KIT1 / SATL100/KIT2

BENEFITS

- Ideal for quick inspections and small tasks
- Leather holster
 - Hands free operation
 - Suitable for rope access work
 - Durable, anti-static leather construction
 - Conductive strap fits across body
 - Extra slots for belt fastening
 - Allows on/off operation of Tasklight while in holster
- Magnetic bracket
 - Enables Tasklight to be used as a worklight
 - Stainless steel magnet and mount, encased in anti-static rubber
 - Spring-loaded buckle-strap for easy attachment
 - Sticks to any magnetic metal surface at any angle
- Base unit
 - Anti-static rubber unit stabilises Tasklight when standing on end
 - Hole in base to facilitate attaching to a stand if necessary

You may also need...

Tasklight only – see page 52

Torch only – see page 48

Holster only – see page 55

Magnetic Bracket only – see page 55

LED Floodlights – see pages 72, 76 & 80



SPECIFICATIONS

CASE DIMENSIONS
460mm x 325mm x 120mm

WEIGHT
4.0kg [SATL100/KIT1]
3.8kg [SATL100/KIT2]

CONTENTS
KIT1
1 x SA LUMIN EX LED Tasklight
1 x Leather Holster
1 x Magnetic Bracket
1 x Base Unit
1 x Charger
1 x Charging Lead 200-250VAC
1 x Vehicle Charging Lead 12-14VDC
1 x SA LUMIN EX LED Torch

KIT2
1 x SA LUMIN EX LED Tasklight
1 x Leather Holster
1 x Magnetic Bracket
1 x Charger
1 x Charging Lead 200-250VAC
1 x Vehicle Charging Lead 12-14VDC

For all other specifications, please refer to page 55 for the SA LUMIN EX LED Tasklight and page 51 for the SA LUMIN EX LED Torch.

CORE PRODUCT INFORMATION

SA LUMIN EX LED Tasklight Kit 1 c/w:
1 x SA LUMIN EX LED Tasklight,
1 x Leather Holster,
1 x Magnetic Bracket,
1 x Base Unit,
1 x Charger,
1 x Charging Lead 200-250VAC,
1 x Vehicle Charging Lead 12-14VDC,
1 x SA LUMIN EX LED Torch
Order Code: SATL100/KIT1



SA LUMIN EX LED Tasklight Kit 2 c/w:
1 x SA LUMIN EX LED Tasklight,
1 x Leather Holster,
1 x Magnetic Bracket,
1 x Charger,
1 x Charging Lead 200-250VAC,
1 x Vehicle Charging Lead 12-14VDC
Order Code: SATL100/KIT2



See pages 142 – 145 for the complete Core Product Directory.





LED WORKLIGHT 100

SA100



EYE-FRIENDLY LIGHT, ANYWHERE YOU NEED IT

The new generation Zone 1 & 2 certified SA LUMIN EX LED Worklights are designed with you, the user, in mind. **Advanced LED technology is combined with exceptionally low cost of ownership to provide complete peace of mind.** Exceptional cable gland and socket protection further improves the reliability of this product. The SA LUMIN LED Worklight 100 is our compact version and is available in linkable and standard formats. Weighing only 1.8kgs, this is a true **'go anywhere'** product. It consumes less than 29 watts of power (at 110V) yet pumps out up to 4000 lumens of light.



LED WORKLIGHT 100

SA100

BENEFITS

- ATEX and IECEx Certified for Zones 1 and 2 (gas), 21 and 22 (dust)
- High Power LED technology
- 180° light output
- Lightweight and compact
- Low cost of ownership
- Linkable versions available
- Advanced diffuser system
- Enhanced cable gland & socket protection
- Tough and durable
- High light output
- Exceptionally reliable
- Waterproof and dustproof
- T4 Temperature rating
- Supplied with Adjustable Hanging Straps and Protective Film
- Vessel Entry Kit available

You may also need...
Transformers – see pages 120 & 124
Splitter Boxes – see page 128



SPECIFICATIONS

CERTIFICATION
II 2 G Ex eb mb op is IIC T4 Gb
II 2 D Ex tb op is IIC T80°C Db

INGRESS PROTECTION
IP66

OPERATING TEMPERATURE
-20°C to +55°C

LED LIFE
Approx. 50,000 hours

LIGHT OUTPUT
Up to 4000 lumens (180°)

LIGHT SOURCE
High Power LED Module

CABLE LENGTH
5m (Linkable)
10m (Non-Linkable)
20m (Non-Linkable 24V)
(or as required)

DIMENSIONS
675mm x 175mmØ

WEIGHT
1.8kg

CORE PRODUCT INFORMATION

SA LUMIN EX LED Worklight 100, 24W 24VAC/DC
c/w ATX plug and braided cable
Order Code: SA100A24ATX



SA LUMIN EX LED Worklight 100, 24W 42VAC
c/w CEAG plug and braided cable
Order Code: SA100A42CEA



SA LUMIN EX LED Worklight 100, 24W 110VAC
Linkable, c/w CEAG plug & coupler and braided cable
Order Code: SA100C110CEA



SA LUMIN EX LED Worklight 100, 24W 230VAC
Linkable, c/w CEAG plug & coupler and braided cable
Order Code: SA100C230CEA



SA LUMIN Worklight Plain Bracket
Order Code: SAFB090



SA LUMIN Worklight Magnetic Bracket
Order Code: SAFB100



SA LUMIN Worklight Magnetic Swivel Bracket
Order Code: SAFB105



SA LUMIN Worklight Scaffold Bracket
Order Code: SAFB110



SA LUMIN Worklight Antistatic Protective Film
Order Code: SASP113



SA LUMIN EX LED Worklight 100 Vessel Entry Kit
c/w 1 x 110V-24V Transformer with 15m of braided cable & CEAG input plug, 4 x SA LUMIN EX LED Worklight 100, 24V, each with 20m of braided cable and ATX plug
Order Code: SAVK100/244-110/CEA



SA LUMIN EX LED Worklight 100 Vessel Entry Kit
c/w 1 x 230V-24V Transformer with 15m of braided cable & CEAG input plug, 4 x SA LUMIN EX LED Worklight 100, 24V, each with 20m of braided cable and ATX plug
Order Code: SAVK100/244-230/CEA

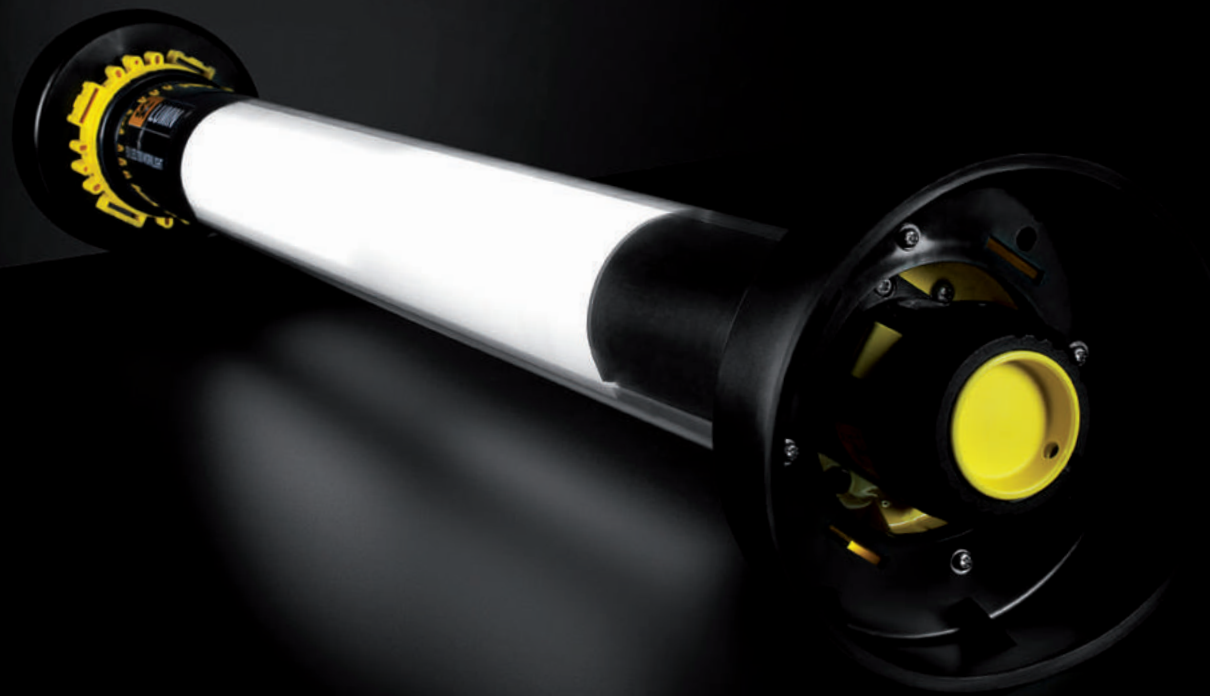


All SA LUMIN Worklights are supplied with anti-static Protective Film and adjustable Hanging Straps. **ATX** and **STAHL** connectors and different cable lengths also available – please contact SA Equip for more details.

See page 26 for our Plug, Socket, and Cable guide.
See pages 142 – 145 for the complete Core Product Directory.

LED WORKLIGHT 200

SA200



VIRTUALLY INDESTRUCTIBLE & EXCEPTIONALLY RELIABLE

The new generation Zone 1 & 2 certified SA LUMIN EX LED Worklights are designed with you, the user, in mind. **Advanced LED technology is combined with exceptionally low cost of ownership to provide complete peace of mind.** Exceptional cable gland and socket protection further improves the reliability of this product. The SA LUMIN LED Worklight 200 provides 360° of light output at up to 8000 lumens, yet only weighs 2.7kg.



LED WORKLIGHT 200

SA200

BENEFITS

- ATEX and IECEx Certified for Zones 1 & 2 (gas), 21 & 22 (dust)
- High Power LED technology
- 360° light output
- Low cost of ownership
- Linkable versions available
- Advanced diffuser system
- Enhanced cable gland and socket protection
- Lightweight and compact
- Tough and durable
- High light output
- Exceptionally reliable
- Waterproof and dustproof
- T4 Temperature rating
- Supplied with Adjustable Hanging Straps and Protective Film
- Vessel Entry Kit available

You may also need...
Transformers – see pages 120 & 124
Splitter Boxes – see page 128



SPECIFICATIONS

CERTIFICATION
II 2 G Ex eb mb op is IIC T4 Gb
II 2 D Ex tb op is IIIC T90°C Db

INGRESS PROTECTION
IP66

OPERATING TEMPERATURE
-20°C to +55°C

LED LIFE
Approx. 50,000 hours

LIGHT OUTPUT
Up to 8000 lumens (360°)

LIGHT SOURCE
High Power LED Module

CABLE LENGTH
5m (Linkable)
10m (Non-Linkable)
20m (Non-Linkable 24V)
(or as required)

DIMENSIONS
1064mm x 175mmØ

WEIGHT
2.7kg

CORE PRODUCT INFORMATION

SA LUMIN EX LED Worklight 200, 48W 24VAC/DC
c/w ATX plug and braided cable
Order Code: SA200A24ATX



SA LUMIN EX LED Worklight 200, 48W 42VAC/DC
c/w CEAG plug and braided cable
Order Code: SA200A42CEA



SA LUMIN EX LED Worklight 200, 48W 110VAC/DC
Linkable, c/w CEAG plug & coupler and braided cable
Order Code: SA200C110CEA



SA LUMIN EX LED Worklight 200, 48W 230VAC/DC
Linkable, c/w CEAG plug & coupler and braided cable
Order Code: SA200C230CEA



SA LUMIN Worklight Plain Bracket
Order Code: SAFB090



SA LUMIN Worklight Magnetic Bracket
Order Code: SAFB100



SA LUMIN Worklight Magnetic Swivel Bracket
Order Code: SAFB105



SA LUMIN Worklight Scaffold Bracket
Order Code: SAFB110



SA LUMIN Worklight Antistatic Protective Film
Order Code: SASP114



SA LUMIN EX LED Worklight 200 Vessel Entry Kit
c/w 1 x 110V-24V Transformer with 15m of braided cable & CEAG input plug, 4 x SA LUMIN EX LED Worklight 200, 24V, each with 20m of braided cable and ATX plug
Order Code: SAVK200/244-110/CEA



SA LUMIN EX LED Worklight 200 Vessel Entry Kit
c/w 1 x 230V-24V Transformer with 15m of braided cable & CEAG input plug, 4 x SA LUMIN EX LED Worklight 200, 24V, each with 20m of braided cable and ATX plug
Order Code: SAVK200/244-230/CEA



All SA LUMIN Worklights are supplied with anti-static Protective Film and adjustable Hanging Straps. **ATX** and **STAHL** connectors and different cable lengths also available – please contact SA Equip for more details.

See page 26 for our Plug, Socket, and Cable guide.
See pages 142 – 145 for the complete Core Product Directory.

LED EMERGENCY WORKLIGHT

SAE100



OUR TOUGH, DURABLE WORKLIGHT, WITH ADDED LIFE-SAVING EMERGENCY BACKUP

The SA LUMIN EX LED Emergency Worklight brings all the features and benefits of our standard Worklights to the workplace – including smooth, eye-friendly light, **a robust, almost unbreakable design** and practically zero maintenance, but has a built-in Lithium-ion battery that provides **emergency lighting for up to 90 minutes** following a power failure. In most emergencies that's enough to evacuate a work area, tank or confined space safely, and could mean the difference between life and death. Like the standard model, it can be daisy-chained for larger areas and works with our SA LUMIN Fixing System for fast, secure fixing to most surfaces.



LED EMERGENCY WORKLIGHT

SAE100

BENEFITS

- ATEX and IECEx Certified for Zones 1 and 2 (gas), 21 and 22 (dust)
- T4 Temperature rating
- High Power LED technology
- Lightweight and compact
- Linkable in-line
- Tough and durable
- Exceptionally reliable
- Waterproof and dustproof
- Anti-static protective film system
- Emergency battery backup function
- Adjustable Hanging Straps

You may also need...
Standard LED Worklights – see pages 60 & 64
Transformers – see pages 120 & 124
Splitter Boxes – see page 128



SPECIFICATIONS

CERTIFICATION
II 2 G Ex eb mb op is IIC T4 Gb
II 2 D Ex tb op is IIIC T80°C Db

INGRESS PROTECTION
IP66

OPERATING TEMPERATURE
-20°C to +55°C

LED LIFE
Approx. 50,000 hours

BATTERY BACKUP OPERATION
Up to 2000 lumens for 90 minutes

BATTERY CHARGING TIME
11 hours approx.

LIGHT OUTPUT
4000 lumens

LIGHT SOURCE
High Power LED Module

WEIGHT
4kg

DIMENSIONS
1064mm x 175mmØ

CORE PRODUCT INFORMATION

SA LUMIN EX LED Emergency Worklight, 32W 24VAC/VDC
c/w ATX plug and 10m of braided cable
Order Code: SAE100A24ATX



SA LUMIN EX LED Emergency Worklight, 32W 110VAC/VDC
Linkable c/w CEAG plug & coupler and 5m of braided cable
Order Code: SAE100C110CEA



SA LUMIN EX LED Emergency Worklight, 32W 110VAC/VDC
Linkable c/w ATX plug and 5m of braided cable
Order Code: SAE100C110ATX



SA LUMIN Worklight Plain Bracket
Order Code: SAFB090



SA LUMIN Worklight Magnetic Bracket
Order Code: SAFB100



SA LUMIN Worklight Magnetic Swivel Bracket
Order Code: SAFB105



SA LUMIN Worklight Scaffold Bracket
Order Code: SAFB110



SA LUMIN Worklight Antistatic Protective Film
Order Code: SASP114



All SA LUMIN Worklights are supplied complete with anti-static Protective Film and Hanging Straps.

Different combinations including cable lengths, connectors and voltages also available – please contact SA Equip for more details.

See page 26 for our Plug, Socket, and Cable guide.

See pages 142 – 145 for the complete Core Product Directory.



LIGHT

LED FLOODLIGHT

SAFL300



STRONG, POWERFUL, WIDE SPREAD OF LIGHT

Compact and highly powerful, this SA LUMIN ATEX LED Floodlight will provide a **strong 5000 lumen light output** to your work area with a light coverage of 13m² at 5m using the latest LED technology. Complete with an adjustable swivel head, you can direct the light to exactly where you need it. Operational in temperatures of -50°C to +55°C, you can successfully operate this light in many global locations. Available with an optional protective shield, protective film, and scaffold bracket, the SA LUMIN ATEX LED Floodlight is extremely maintenance friendly with in-built voltage drop protection and a 5 year warranty.



LED FLOODLIGHT

SAFL300

BENEFITS

- ATEX and IECEx Certified for Zones 1 and 2 (gas), 21 and 22 (dust)
- Certified Portable
- High Power LED Light Beam
- 13m² light coverage at 5m
- 5-year warranty
- Maintenance Friendly
- Operational temperature -50°C to +55°C
- In-built Voltage Drop Protection
- Waterproof and dustproof
- Toughened Glass lens
- T4 Temperature rated
- Adjustable swivel head
- Linkable version available
- Anti-Static Protective Lens System
- Optional Scaffold Bracket
- Optional Adjustable Stand
- Vessel Entry Kits available

Compatible with the **SA POWERNET** range
Compatible with the **SA LUMIN** Vessel Entry Kits



SPECIFICATIONS

- CERTIFICATION**
Ex II 2 GD
Ex emb IIC T4 Gb
Ex tb IIIC T82°C Db
- INGRESS PROTECTION**
IP66 & IP67
- VOLTAGE OPTIONS**
24VAC/DC, 42VAC/DC,
110VAC, 230VAC
- OPERATING TEMPERATURE**
-50°C to +55°C (Non-Linkable)
-20°C to +40°C (Linkable)
- LIGHT OUTPUT**
5000 lumens
- LIGHT COVERAGE**
At 5m distance, 100 lux or greater,
over an area of 13m²
- WARRANTY**
5 years
- CABLE LENGTH**
10m (or as required)
- DIMENSIONS**
430mm (w) x 260mm (d) x 390mm (h)
(Non-Linkable version)
- WEIGHT**
10.2kg (Non-Linkable version)
11.6kg (Linkable version)

CORE PRODUCT INFORMATION

SA LUMIN EX LED Floodlight 68W 24VAC c/w ATX plug and braided cable Order Code: SAFL300A24ATX	
SA LUMIN EX LED Floodlight 68W 42VAC c/w CEAG plug and braided cable Order Code: SAFL300A42CEA	
SA LUMIN EX LED Floodlight 68W 110VAC c/w CEAG plug and braided cable Order Code: SAFL300A110CEA	
SA LUMIN EX LED Floodlight 68W 230VAC c/w CEAG plug and braided cable Order Code: SAFL300A230CEA	
SA LUMIN EX LED Floodlight 68W 110VAC Linkable, c/w CEAG plug and braided cable Order Code: SAFL300C110CEA	
SA LUMIN EX LED Floodlight 68W 230VAC Linkable, c/w CEAG plug and braided cable Order Code: SAFL300C230CEA	
SA LUMIN Floodlight Scaffold Bracket Order Code: SAFL/SB	
SA LUMIN Floodlight Protective Shield Order Code: SAFL/PS	
SA LUMIN Floodlight Protective Film Order Code: SAFL/PF	
SA LUMIN Floodlight Tripod Stand Order Code: SAFL/TS	

Vessel Entry Kits available – **SAVK300F/244-110/CEA** and **SAVK300F/244-230/CEA**

Different combinations of plugs and cable lengths also available –
please contact SA Equip for more details.

See page 26 for our Plug, Socket and Cable guide.
See pages 142 – 145 for the complete Core Product Directory.

LED COMPACT FLOODLIGHT

SAFL200



EXCEPTIONALLY COMPACT FLOODLIGHT WITH POWERFUL LIGHT SPREAD

An extremely compact version of the new SA LUMIN Floodlight, the SAFL200 still packs an exceptional punch with a **light output at 2500 lumens** to your work area with a light coverage of 6.5m² at 5m using the latest LED technology. Complete with an adjustable swivel head, you can direct the light to exactly where you need it. Operational in temperatures of -50°C to +55°C, you can successfully operate this light in many global locations. Available with an optional protective shield, protective film, and scaffold bracket, the SA LUMIN ATEX LED Compact Floodlight is extremely maintenance friendly with in-built voltage drop protection and a 5 year warranty.



LED COMPACT FLOODLIGHT

SAFL200

BENEFITS

- ATEX and IECEx Certified for Zones 1 and 2 (gas), 21 and 22 (dust)
- Certified Portable
- High Power LED Light Beam
- 6.5m² light coverage at 5m
- 5-year warranty
- Maintenance Friendly
- Operational temperature -50°C to +55°C
- In-built Voltage Drop Protection
- Waterproof and dustproof
- Toughened Glass
- T4 Temperature rated
- Adjustable swivel head
- Anti-Static Protective Lens System
- Optional Scaffold Brackets

Compatible with the **SA POWERNET** range
Compatible with the **SA LUMIN** Vessel Entry Kits



SPECIFICATIONS

CERTIFICATION

Ex II 2 GD
Ex emb IIC T4 Gb
Ex tb IIIC T82°C Db

INGRESS PROTECTION

IP67

VOLTAGE OPTIONS

24VAC/DC, 42VAC/DC,
110VAC, 230VAC

OPERATING TEMPERATURE

-50°C to +55°C

LIGHT OUTPUT

2500 lumens

LIGHT COVERAGE

At 5m distance, 100 lux or greater,
over an area of 6.5m²

WARRANTY

5 years

CABLE LENGTH

10m (or as required)

DIMENSIONS

340mm (w) x 220mm (d) x 390mm (h)

WEIGHT

7.2kg

CORE PRODUCT INFORMATION

SA LUMIN EX LED Compact Floodlight 34W 24VAC/DC
c/w ATX plug and braided cable
Order Code: SAFL200A24ATX



SA LUMIN EX LED Compact Floodlight 34W 42VAC/DC
c/w CEAG plug and braided cable
Order Code: SAFL200A42CEA



SA LUMIN EX LED Compact Floodlight 34W 110VAC
c/w CEAG plug and braided cable
Order Code: SAFL200A110CEA



SA LUMIN EX LED Compact Floodlight 34W 230VAC
c/w CEAG plug and braided cable
Order Code: SAFL200A230CEA



SA LUMIN Compact Floodlight Scaffold Bracket
Order Code: SAFL/SB



SA LUMIN Compact Floodlight Tripod Stand
Order Code: SAFL/TS



SA LUMIN Compact Floodlight Protective Shield
Order Code: SAFL/PS-C



SA LUMIN Compact Floodlight Protective Film
Order Code: SAFL/PF-C



SA LUMIN EX LED Compact Floodlight Vessel Entry Kit
c/w 1 x 110V-24V Transformer with 15m of braided cable
and CEAG input plug, 4 x SA LUMIN EX LED Compact
Floodlights 24V, each with 20m of braided cable & ATX plug
Order Code: SAVK200F/244-110/CEA



SA LUMIN EX LED Compact Floodlight Vessel Entry Kit
c/w 1 x 230V-24V Transformer with 15m of braided cable
and CEAG input plug, 4 x SA LUMIN EX LED Compact
Floodlights 24V, each with 20m of braided cable & ATX plug
Order Code: SAVK200F/244-230/CEA



Different combinations of plugs and cable lengths also available –
please contact SA Equip for more details.

See page 26 for our Plug, Socket and Cable guide.
See pages 142 – 145 for the complete Core Product Directory.

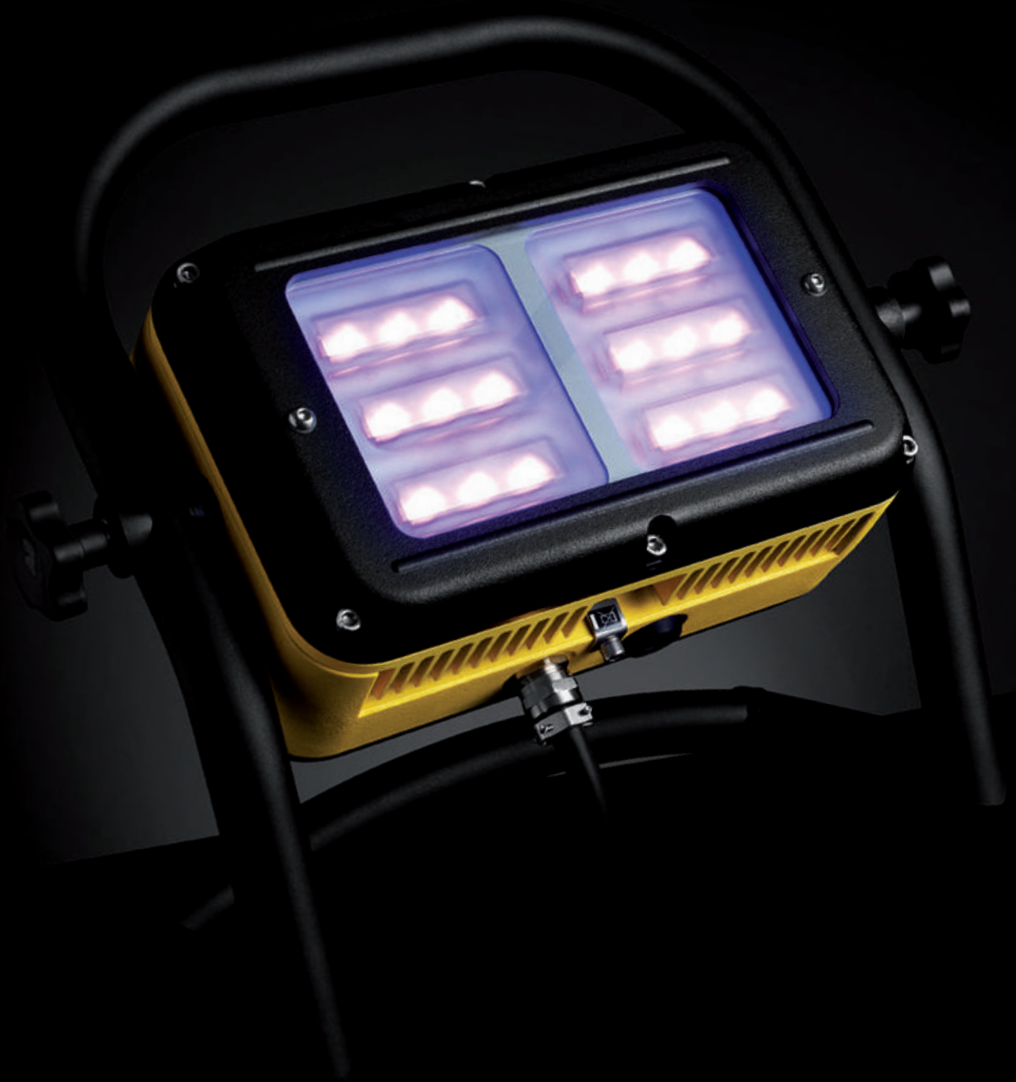
UV LED FLOODLIGHT

SAFL350



CURE COATINGS UP TO 6x FASTER

Proven under controlled test conditions, the UV LED Floodlight is a portable ATEX Zone 1, 2, 21 and 22 certified unit, yet is powerful enough to cure UV sensitive coatings such as FibaRoll, at an amazing **6x faster than standard LED Floodlights**. This high performance and reliable UV LED Floodlight is designed with ultra-long life UV LEDs and provides a highly effective 390nm wavelength – ideal for wherever powerful UV light is required.





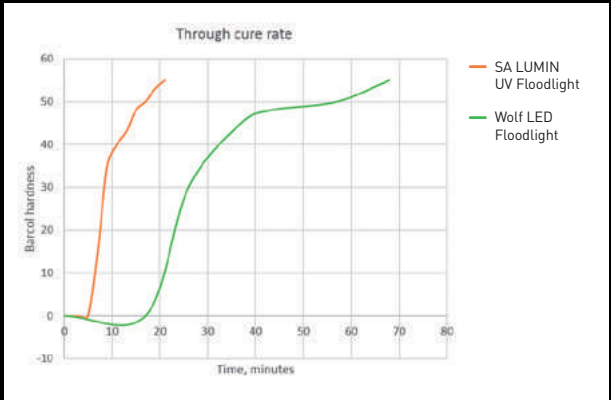
UV LED FLOODLIGHT

SAFL350

BENEFITS

- ATEX and IECEx Certified for Zones 1 and 2 (gas), 21 and 22 (dust)
- Certified Portable
- High Power UV LED Light Beam
- 5-year warranty
- Maintenance Friendly
- Operational temperature -50°C to +55°C
- In-built Voltage Drop Protection
- Waterproof and dustproof
- Toughened glass lens
- T4 Temperature rated
- Adjustable swivel head
- Linkable version available
- Anti-Static Protective Lens System
- Optional Scaffold Brackets

You may also need...
Transformers – see pages 120 & 124
Splitter Boxes – see page 128



SPECIFICATIONS

CERTIFICATION

Ex II 2 GD
Ex emb IIC T4 Gb
Ex tb IIIC T82°C Db

INGRESS PROTECTION

IP67

VOLTAGE OPTIONS

24VAC/DC, 110VAC, 230VAC

OPERATING TEMPERATURE

-50°C to +55°C (Non-Linkable)
-20°C to +40°C (Linkable)

LIGHT WAVELENGTH

390nm

WARRANTY

5 years

CABLE LENGTH

10m (or as required)

DIMENSIONS

430mm (w) x 230mm (d) x 390mm (h)
(Non-Linkable version)

WEIGHT

10.2kg (Non-Linkable version)

CORE PRODUCT INFORMATION

SA LUMIN EX UV LED Floodlight 68W 24VAC/DC
c/w ATX plug and braided cable
Order Code: SAFL350A24ATX



SA LUMIN EX UV LED Floodlight 68W 110VAC
c/w CEAG plug and braided cable
Order Code: SAFL350A110CEA



SA LUMIN EX UV LED Floodlight 68W 230VAC
c/w CEAG plug and braided cable
Order Code: SAFL350A230CEA



SA LUMIN Floodlight Scaffold Bracket
Order Code: SAFL/SB



SA LUMIN Floodlight Protective Film
Order Code: SAFL/PF



SA LUMIN Floodlight Tripod Stand
Order Code: SAFL/TS



Different combinations of plugs and cable lengths also available – please contact SA Equip for more details.

See page 26 for our Plug, Socket and Cable guide.

See pages 142 – 145 for the complete Core Product Directory.



LIGHT

BLAST LIGHT

SABL120A24



CONSISTENT, PRECISE BLASTING FOR UP TO 100% GREATER EFFICIENCY

With direct illumination straight onto the work focus, our Blast Light can **directly improve productivity levels** by eliminating the need to go back over missed areas. A quick-release hose clamp, disposable protective lens system and 20m of braided cable make it easy to use, while a penetrating beam **shines right through dust**, cutting the need to wait for clear air before inspection.



BLAST LIGHT

SABL120A24

BENEFITS

- ATEX Certified for Zones 1 and 2 (gas), 21 and 22 (dust)
- Penetrating beam of light
- Waterproof and dustproof
- Easy to use
- Replaceable Protective Lens System
- Quick release hose clamp
- Lightweight
- T4 temperature rating
- 24V operating voltage
- Lens Protection Cap
- Available with a Water Jetting Clamp
- Compatible with the SA POWERNET 400V Transformer
- Compatible with the SA LUMIN LED Vessel Entry Kits

Your may also need...

Extension Leads – see page 136

Transformers – see pages 120 & 124

Splitter Boxes – see page 128



SPECIFICATIONS

CERTIFICATION

- ⚡ II 2G Ex d IIC T4 Gb
- ⚡ II 2D Ex tb IIIC T130°C Db

INGRESS PROTECTION

IP67

OPERATING TEMPERATURE

-20°C to +40°C

LAMP LIFE

Approx. 1000 hours

LIGHT OUTPUT

3100 Cd
150 lumens

DIMENSIONS

136mm x 85mm diameter

WEIGHT

0.8kg

CORE PRODUCT INFORMATION

SA LUMIN EX Blast Light 24V c/w 20W halogen bulb, quick release 40mm blast hose clamp, and 20m of braided HOFR cable

Order Code: SABL120A24/ATX/20



SA LUMIN EX Blast Light Spare Protective Lens
Pack of 10

Order Code: SABL/LC



CEAG & STAHL plugs and different cable lengths also available – please contact SA Equip for more details.

See page 26 for our Plug, Socket, and Cable guide.

See pages 142 – 145 for the complete Core Product Directory.

